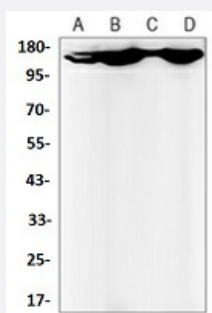


RecomAb™

# BCR recombinant monoclonal antibody

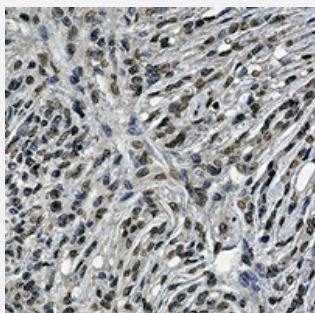
Catalog # RAB02577      Size 100 uL

## Applications



### Western Blot (Cell lysate)

Western blot analysis of A549 (A), HL60 (B), U2OS (C), C6 (D) whole cell lysates with BCR recombinant monoclonal antibody (Cat # RAB02577).



### Immunohistochemistry (Formalin/PFA-fixed paraffin-embedded sections)

Immunohistochemical analysis of human brain formalin fixed paraffin embedded tissue section using BCR recombinant monoclonal antibody (Cat # RAB02577). The section was pre-treated using heat mediated antigen retrieval with sodium citrate buffer (pH 6.1). The section was then incubated with the antibody at room temperature and detected using an HRP conjugated compact polymer system. DAB was used as the chromogen. The section was then counterstained with haematoxylin and mounted with DPX.

## Specification

<b>Product Description</b>	Rabbit recombinant monoclonal antibody raised against human BCR.
<b>Antibody Species</b>	Rabbit
<b>Immunogen</b>	Original antibody is raised against a synthetic peptide of human BCR.
<b>Theoretical MW (kDa)</b>	160
<b>Reactivity</b>	Human, Rat

Specificity	Recognizes endogenous levels of BCR protein.
Form	Liquid
Purification	Immunogen affinity chromatography
Isotype	IgG
Recommend Usage	Immunohistochemistry (1:50-1:100) Immunoprecipitation (1:10-1:50) Western Blot (1:500-1:1000)
Storage Buffer	In 50mM Tris-Glycine, pH 7.4 (0.15M NaCl, 50% Glycerol, 0.01% Sodium azide and 0.05% BSA)
Storage Instruction	Store at 4°C short term. Aliquot and store at -20°C long term. Avoid freeze-thaw cycles.
Note	This product contains sodium azide: a POISONOUS AND HAZARDOUS SUBSTANCE which should be handled by trained staff only.

## Applications

- Western Blot (Cell lysate)

Western blot analysis of A549 (A), HL60 (B), U2OS (C), C6 (D) whole cell lysates with BCR recombinant monoclonal antibody (Cat # RAB02577).

- Immunohistochemistry (Formalin/PFA-fixed paraffin-embedded sections)

Immunohistochemical analysis of human brain formalin fixed paraffin embedded tissue section using BCR recombinant monoclonal antibody (Cat # RAB02577). The section was pre-treated using heat mediated antigen retrieval with sodium citrate buffer (pH 6.1). The section was then incubated with the antibody at room temperature and detected using an HRP conjugated compact polymer system. DAB was used as the chromogen. The section was then counterstained with haematoxylin and mounted with DPX.

- Immunoprecipitation

## Gene Info — BCR

Entrez GeneID	<a href="#">613</a>
Protein Accession#	<a href="#">P11274</a>
Gene Name	BCR
Gene Alias	ALL, BCR-ABL1, BCR1, CML, D22S11, D22S662, FLJ16453, PHL

Gene Description	breakpoint cluster region
Omim ID	<a href="#">151410 608232</a>
Gene Ontology	<a href="#">Hyperlink</a>
Gene Summary	A reciprocal translocation between chromosomes 22 and 9 produces the Philadelphia chromosome, which is often found in patients with chronic myelogenous leukemia. The chromosome 22 breakpoint for this translocation is located within the BCR gene. The translocation produces a fusion protein which is encoded by sequence from both BCR and ABL, the gene at the chromosome 9 breakpoint. Although the BCR-ABL fusion protein has been extensively studied, the function of the normal BCR gene product is not clear. The protein has serine/threonine kinase activity and is a GTPase-activating protein for p21rac. Two transcript variants encoding different isoforms have been found for this gene. [provided by RefSeq]
Other Designations	bcr-abl1 e14a3 chimeric protein

## Pathway

- [Chronic myeloid leukemia](#)
- [Pathways in cancer](#)

## Disease

- [Alzheimer disease](#)
- [Angina Pectoris](#)
- [Bipolar Disorder](#)
- [Brief Psychiatric Rating Scale](#)
- [Chromosome Breakage](#)
- [Coronary Vasospasm](#)
- [Depressive Disorder](#)
- [Genetic Predisposition to Disease](#)
- [Leukemia](#)
- [Lung Neoplasms](#)
- [Pulmonary Disease](#)

- [Small Cell Lung Carcinoma](#)
- [Tobacco Use Disorder](#)
- [Urinary Bladder Neoplasms](#)
- [Werner syndrome](#)