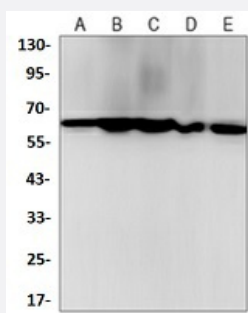


RecomAb™

# YY1 recombinant monoclonal antibody

Catalog # RAB02560      Size 100 uL

## Applications



### Western Blot

Western blot analysis of K562 (A), rat brain (B), C6 (C), NIH3T3 (D), HeLa (E) whole cell lysates with YY1 recombinant monoclonal antibody (Cat # RAB02560).

## Specification

<b>Product Description</b>	Rabbit recombinant monoclonal antibody raised against human YY1.
<b>Antibody Species</b>	Rabbit
<b>Immunogen</b>	Original antibody is raised against a synthetic peptide of human YY1.
<b>Theoretical MW (kDa)</b>	65
<b>Reactivity</b>	Human, Mouse, Rat
<b>Specificity</b>	Recognizes endogenous levels of YY1 protein.
<b>Form</b>	Liquid
<b>Purification</b>	Immunogen affinity chromatography
<b>Isotype</b>	IgG
<b>Recommend Usage</b>	Immunoprecipitation (1:10-1:50) Western Blot (1:500-1:1000)
<b>Storage Buffer</b>	In 50mM Tris-Glycine, pH 7.4 (0.15M NaCl, 50% Glycerol, 0.01% Sodium azide and 0.05% BSA)

**Storage Instruction**

Store at 4°C short term.  
Aliquot and store at -20°C long term.  
Avoid freeze-thaw cycles.

**Note**

This product contains sodium azide: a POISONOUS AND HAZARDOUS SUBSTANCE which should be handled by trained staff only.

## Applications

- Western Blot

Western blot analysis of K562 (A), rat brain (B), C6 (C), NIH3T3 (D), Hela (E) whole cell lysates with YY1 recombinant monoclonal antibody (Cat # RAB02560).

## Gene Info — YY1

**Entrez GeneID** [7528](#)

**Protein Accession#** [P25490](#)

**Gene Name** YY1

**Gene Alias** DELTA, INO80S, NF-E1, UCRBP, YIN-YANG-1

**Gene Description** YY1 transcription factor

**Omim ID** [600013](#)

**Gene Ontology** [Hyperlink](#)

**Gene Summary** YY1 is a ubiquitously distributed transcription factor belonging to the GLI-Kruppel class of zinc finger proteins. The protein is involved in repressing and activating a diverse number of promoters. YY1 may direct histone deacetylases and histone acetyltransferases to a promoter in order to activate or repress the promoter, thus implicating histone modification in the function of YY1. [provided by RefSeq]

**Other Designations** INO80 complex subunit S|Yin and Yang 1 protein

## Disease

- [Cardiovascular Diseases](#)
- [Diabetes Mellitus](#)
- [Edema](#)