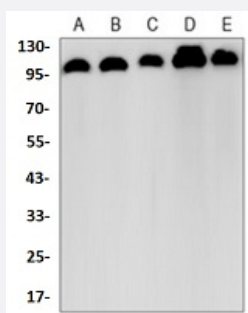


RecomAb™

VCL recombinant monoclonal antibody

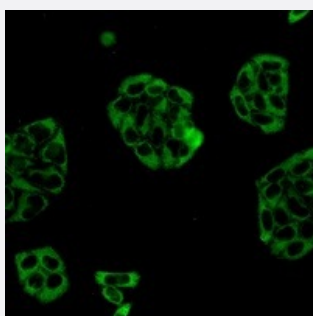
Catalog # RAB02556 Size 100 uL

Applications



Western Blot

Western blot analysis of K562 (A), rat brain (B), C6 (C), NIH3T3 (D), Hela (E) whole cell lysates with VCL recombinant monoclonal antibody (Cat # RAB02556).



Immunofluorescence

Immunofluorescent analysis of HeLa cells with VCL recombinant monoclonal antibody (Cat # RAB02556). Formalin-fixed cells were permeabilized with 0.1% Triton X-100 in TBS for 5-10 minutes and blocked with 3% BSA-PBS for 30 minutes at room temperature. Cells were probed with the primary antibody in 3% BSA-PBS and incubated overnight at 4 °C in a humidified chamber. Cells were washed with PBST and incubated with a AF488-conjugated secondary antibody (green) in PBS at room temperature in the dark.

Specification

| | |
|----------------------|---|
| Product Description | Rabbit recombinant monoclonal antibody raised against human VCL. |
| Antibody Species | Rabbit |
| Immunogen | Original antibody is raised against a synthetic peptide of human VCL. |
| Theoretical MW (kDa) | 124 |
| Reactivity | Human, Mouse, Rat |
| Specificity | Recognizes endogenous levels of Vinculin protein. |

| | |
|---------------------|---|
| Form | Liquid |
| Purification | Immunogen affinity chromatography |
| Isotype | IgG |
| Recommend Usage | Immunocytochemistry (1:50-1:100) Immunofluorescence (1:50-1:100) Immunoprecipitation (1:10-1:50) Western Blot (1:500-1:1000) |
| Storage Buffer | In 50mM Tris-Glycine, pH 7.4 (0.15M NaCl, 50% Glycerol, 0.01% Sodium azide and 0.05% BSA) |
| Storage Instruction | Store at 4°C short term. Aliquot and store at -20°C long term. Avoid freeze-thaw cycles. |
| Note | This product contains sodium azide: a POISONOUS AND HAZARDOUS SUBSTANCE which should be handled by trained staff only. |

Applications

- Western Blot

Western blot analysis of K562 (A), rat brain (B), C6 (C), NIH3T3 (D), HeLa (E) whole cell lysates with VCL recombinant monoclonal antibody (Cat # RAB02556).

- Immunocytochemistry

- Immunofluorescence

Immunofluorescent analysis of HeLa cells with VCL recombinant monoclonal antibody (Cat # RAB02556). Formalin-fixed cells were permeabilized with 0.1% Triton X-100 in TBS for 5-10 minutes and blocked with 3% BSA-PBS for 30 minutes at room temperature. Cells were probed with the primary antibody in 3% BSA-PBS and incubated overnight at 4 °C in a humidified chamber. Cells were washed with PBST and incubated with a AF488-conjugated secondary antibody (green) in PBS at room temperature in the dark.

- Immunoprecipitation

Gene Info — VCL

Entrez GeneID [7414](#)

Protein Accession# [P18206](#)

| | |
|--------------------|---|
| Gene Name | VCL |
| Gene Alias | CMD1W, MVCL |
| Gene Description | vinculin |
| Omim ID | 193065 611407 |
| Gene Ontology | Hyperlink |
| Gene Summary | Vinculin is a cytoskeletal protein associated with cell-cell and cell-matrix junctions, where it is thought to function as one of several interacting proteins involved in anchoring F-actin to the membrane. Defects in VCL are the cause of cardiomyopathy dilated type 1W. Dilated cardiomyopathy is a disorder characterized by ventricular dilation and impaired systolic function, resulting in congestive heart failure and arrhythmia. Multiple alternatively spliced transcript variants have been found for this gene, but the biological validity of some variants has not been determined. [provided by RefSeq] |
| Other Designations | OTTHUMP00000019861 OTTHUMP00000043885 metavinculin |

Pathway

- [Adherens junction](#)
- [Focal adhesion](#)
- [Leukocyte transendothelial migration](#)
- [Regulation of actin cytoskeleton](#)

Disease

- [Alzheimer Disease](#)
- [Cardiomyopathy](#)
- [Cardiovascular Diseases](#)
- [Cleft Lip](#)
- [Cleft Palate](#)
- [Diabetes Mellitus](#)
- [Edema](#)
- [Genetic Predisposition to Disease](#)