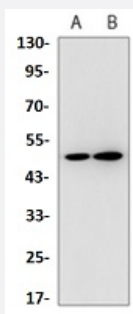


RecomAb™

# TRIM21 recombinant monoclonal antibody

Catalog # RAB02552      Size 100 uL

## Applications



### Western Blot (Cell lysate)

Western blot analysis of K562 (A), HeLa (B) whole cell lysates with TRIM21 recombinant monoclonal antibody (Cat # RAB02552).

## Specification

Product Description	Rabbit recombinant monoclonal antibody raised against human TRIM21.
Antibody Species	Rabbit
Immunogen	Original antibody is raised against recombinant protein of human TRIM21.
Theoretical MW (kDa)	50
Reactivity	Human
Specificity	Recognizes endogenous levels of RNF81 protein.
Form	Liquid
Purification	Immunogen affinity chromatography
Isotype	IgG
Recommend Usage	Western Blot (1:500-1:1000)
Storage Buffer	In 50mM Tris-Glycine, pH 7.4 (0.15M NaCl, 50% Glycerol, 0.01% Sodium azide and 0.05% BSA)

**Storage Instruction**

Store at 4°C short term.  
Aliquot and store at -20°C long term.  
Avoid freeze-thaw cycles.

**Note**

This product contains sodium azide: a POISONOUS AND HAZARDOUS SUBSTANCE which should be handled by trained staff only.

## Applications

- Western Blot (Cell lysate)

Western blot analysis of K562 (A), Hela (B) whole cell lysates with TRIM21 recombinant monoclonal antibody (Cat # RAB02552).

## Gene Info — TRIM21

**Entrez GeneID** [6737](#)

**Protein Accession#** [P19474](#)

**Gene Name** TRIM21

**Gene Alias** RNF81, RO52, SSA, SSA1

**Gene Description** tripartite motif-containing 21

**Omim ID** [109092](#)

**Gene Ontology** [Hyperlink](#)

**Gene Summary**

This gene encodes a member of the tripartite motif (TRIM) family. The TRIM motif includes three zinc-binding domains, a RING, a B-box type 1 and a B-box type 2, and a coiled-coil region. The encoded protein is part of the RoSSA ribonucleoprotein, which includes a single polypeptide and one of four small RNA molecules. The RoSSA particle localizes to both the cytoplasm and the nucleus. RoSSA interacts with autoantigens in patients with Sjogren syndrome and systemic lupus erythematosus. Alternatively spliced transcript variants for this gene have been described but the full-length nature of only one has been determined. [provided by RefSeq]

**Other Designations**

Sicca syndrome antigen A|Sjogren syndrome antigen A1 (52kDa, ribonucleoprotein autoantigen SS-A/Ro)|tripartite motif protein 21

## Pathway

- [Systemic lupus erythematosus](#)

## Disease

- [Anemia](#)
- [Genetic Predisposition to Disease](#)
- [Lupus Erythematosus](#)
- [Ovarian Neoplasms](#)