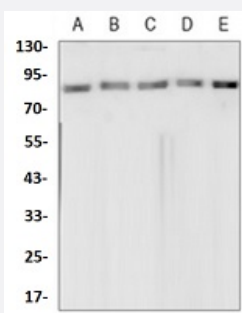


RecomAb™

TOP1 recombinant monoclonal antibody

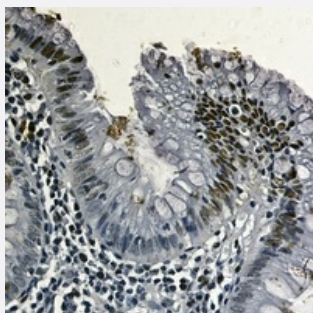
Catalog # RAB02549 Size 100 uL

Applications



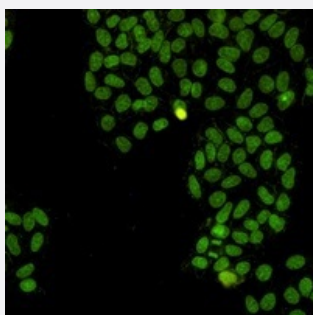
Western Blot

Western blot analysis of K562 (A), rat brain (B), C6 (C), NIH3T3 (D), HeLa (E) whole cell lysates with Topoisomerase 1 recombinant monoclonal antibody (Cat # RAB02549).



Immunohistochemistry (Formalin/PFA-fixed paraffin-embedded sections)

Immunohistochemical analysis of human colon cancer formalin fixed paraffin embedded tissue section using TOP1 recombinant monoclonal antibody (Cat # RAB02549). The section was pre-treated using heat mediated antigen retrieval with sodium citrate buffer (pH 6.62). The section was then incubated with the antibody at room temperature and detected using an HRP conjugated compact polymer system. DAB was used as the chromogen. The section was then counterstained with haematoxylin and mounted with DPX.



Immunofluorescence

Immunofluorescent analysis of HeLa cells with TOP1 recombinant monoclonal antibody (Cat # RAB02549). Formalin-fixed cells were permeabilized with 0.1% Triton X-100 in TBS for 5-10 minutes and blocked with 3% BSA-PBS for 30 minutes at room temperature. Cells were probed with the primary antibody in 3% BSA-PBS and incubated overnight at 4 °C in a humidified chamber. Cells were washed with PBST and incubated with a AF488-conjugated secondary antibody (green) in PBS at room temperature in the dark.

Specification

Product Description	Rabbit recombinant monoclonal antibody raised against human TOP1.
Antibody Species	Rabbit
Immunogen	Original antibody is raised against a synthetic peptide of human TOP1.
Theoretical MW (kDa)	90
Reactivity	Human, Mouse, Rat
Specificity	Recognizes endogenous levels of Topoisomerase 1 protein.
Form	Liquid
Purification	Immunogen affinity chromatography
Isotype	IgG
Recommend Usage	Immunocytochemistry (1:50-1:100) Immunofluorescence (1:50-1:100) Immunohistochemistry (1:50-1:100) Western Blot (1:500-1:1000)
Storage Buffer	In 50mM Tris-Glycine, pH 7.4 (0.15M NaCl, 50% Glycerol, 0.01% Sodium azide and 0.05% BSA)
Storage Instruction	Store at 4°C short term. Aliquot and store at -20°C long term. Avoid freeze-thaw cycles.
Note	This product contains sodium azide: a POISONOUS AND HAZARDOUS SUBSTANCE which should be handled by trained staff only.

Applications

- Western Blot

Western blot analysis of K562 (A), rat brain (B), C6 (C), NIH3T3 (D), Hela (E) whole cell lysates with Topoisomerase 1 recombinant monoclonal antibody (Cat # RAB02549).

- Immunohistochemistry (Formalin/PFA-fixed paraffin-embedded sections)

Immunohistochemical analysis of human colon cancer formalin fixed paraffin embedded tissue section using TOP1 recombinant monoclonal antibody (Cat # RAB02549). The section was pre-treated using heat mediated antigen retrieval with sodium citrate buffer (pH 6.62). The section was then incubated with the antibody at room temperature and detected using an HRP conjugated compact polymer system. DAB was used as the chromogen. The section was then counterstained with haematoxylin and mounted with DPX.

- Immunocytochemistry

- Immunofluorescence

Immunofluorescent analysis of HeLa cells with TOP1 recombinant monoclonal antibody (Cat # RAB02549). Formalin-fixed cells were permeabilized with 0.1% Triton X-100 in TBS for 5-10 minutes and blocked with 3% BSA-PBS for 30 minutes at room temperature. Cells were probed with the primary antibody in 3% BSA-PBS and incubated overnight at 4 °C in a humidified chamber. Cells were washed with PBST and incubated with a AF488-conjugated secondary antibody (green) in PBS at room temperature in the dark.

Gene Info — TOP1

Entrez GeneID [7150](#)

Protein Accession# [P11387](#)

Gene Name TOP1

Gene Alias TOPI

Gene Description topoisomerase (DNA) I

Omim ID [126420](#)

Gene Ontology [Hyperlink](#)

Gene Summary This gene encodes a DNA topoisomerase, an enzyme that controls and alters the topologic state of DNA during transcription. This enzyme catalyzes the transient breaking and rejoining of a single strand of DNA which allows the strands to pass through one another, thus altering the topology of DNA. This gene is localized to chromosome 20 and has pseudogenes which reside on chromosomes 1 and 22. [provided by RefSeq]

Other Designations DNA topoisomerase I[OTTHUMP00000031713]type I DNA topoisomerase

Disease

- [Neoplasms](#)

- [Neutropenia](#)