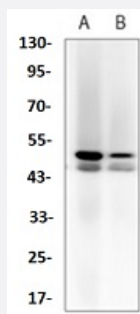


RecomAb™

Mapk8 recombinant monoclonal antibody

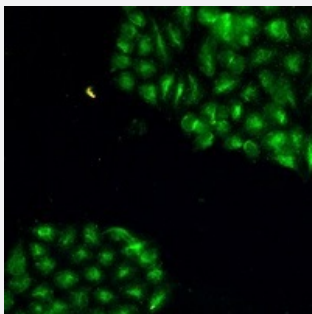
Catalog # RAB02516 Size 100 uL

Applications



Western Blot (Cell lysate)

Western blot analysis of C6 (A), NIH3T3 (B) whole cell lysates with JNK1 recombinant monoclonal antibody (Cat # RAB02516).



Immunofluorescence

Immunofluorescent analysis of HeLa cells with JNK1 recombinant monoclonal antibody (Cat # RAB02516). Formalin-fixed cells were permeabilized with 0.1% Triton X-100 in TBS for 5-10 minutes and blocked with 3% BSA-PBS for 30 minutes at room temperature. Cells were probed with the primary antibody in 3% BSA-PBS and incubated overnight at 4 °C in a humidified chamber. Cells were washed with PBST and incubated with a AF488-conjugated secondary antibody (green) in PBS at room temperature in the dark.

Specification

Product Description	Rabbit recombinant monoclonal antibody raised against mouse Mapk8.
Antibody Species	Rabbit
Immunogen	Original antibody is raised against recombinant protein of human JNK1.
Theoretical MW (kDa)	46, 54
Reactivity	Mouse, Rat
Specificity	Recognizes endogenous levels of JNK1 protein.

Form	Liquid
Purification	Immunogen affinity chromatography
Isotype	IgG
Recommend Usage	Immunocytochemistry (1:50-1:100) Immunofluorescence (1:50-1:100) Immunoprecipitation (1:10-1:50) Western Blot (1:500-1:1000) The optimal working dilution should be determined by the end user.
Storage Buffer	In 50mM Tris-Glycine, pH 7.4 (0.15M NaCl, 50% Glycerol, 0.01% Sodium azide and 0.05% BSA)
Storage Instruction	Store at 4°C short term. Aliquot and store at -20°C long term. Avoid freeze-thaw cycles.
Note	This product contains sodium azide: a POISONOUS AND HAZARDOUS SUBSTANCE which should be handled by trained staff only.

Applications

- Western Blot (Cell lysate)

Western blot analysis of C6 (A), NIH3T3 (B) whole cell lysates with JNK1 recombinant monoclonal antibody (Cat # RAB02516).

- Immunocytochemistry

- Immunofluorescence

Immunofluorescent analysis of HeLa cells with JNK1 recombinant monoclonal antibody (Cat # RAB02516). Formalin-fixed cells were permeabilized with 0.1% Triton X-100 in TBS for 5-10 minutes and blocked with 3% BSA-PBS for 30 minutes at room temperature. Cells were probed with the primary antibody in 3% BSA-PBS and incubated overnight at 4 °C in a humidified chamber. Cells were washed with PBST and incubated with a AF488-conjugated secondary antibody (green) in PBS at room temperature in the dark.

- Immunoprecipitation

Gene Info — MAPK8

Entrez GeneID [5599](#)

Protein Accession# [Q91Y86;P49185](#)

Gene Name	MAPK8
Gene Alias	JNK, JNK1, JNK1A2, JNK21B1/2, PRKM8, SAPK1
Gene Description	mitogen-activated protein kinase 8
Omim ID	601158
Gene Ontology	Hyperlink
Gene Summary	<p>The protein encoded by this gene is a member of the MAP kinase family. MAP kinases act as an integration point for multiple biochemical signals, and are involved in a wide variety of cellular processes such as proliferation, differentiation, transcription regulation and development. This kinase is activated by various cell stimuli, and targets specific transcription factors, and thus mediates immediate-early gene expression in response to cell stimuli. The activation of this kinase by tumor necrosis factor alpha (TNF-alpha) is found to be required for TNF-alpha induced apoptosis. This kinase is also involved in UV radiation induced apoptosis, which is thought to be related to cytochrome c-mediated cell death pathway. Studies of the mouse counterpart of this gene suggested that this kinase play a key role in T cell proliferation, apoptosis and differentiation. Four alternatively spliced transcript variants encoding distinct isoforms have been reported. [provided by RefSeq]</p>
Other Designations	JNK1 alpha protein kinase JNK1 beta protein kinase JUN N-terminal kinase OTTHUMP00000019552 OTTHUMP00000019555 OTTHUMP00000019556 OTTHUMP00000019558 c-Jun N-terminal kinase 1 mitogen-activated protein kinase 8 isoform JNK1 alpha1 mitogen-activated protein

Pathway

- [Adipocytokine signaling pathway](#)
- [Colorectal cancer](#)
- [Epithelial cell signaling in Helicobacter pylori infection](#)
- [ErbB signaling pathway](#)
- [Fc epsilon RI signaling pathway](#)
- [Focal adhesion](#)
- [GnRH signaling pathway](#)
- [Insulin signaling pathway](#)
- [MAPK signaling pathway](#)
- [Neurotrophin signaling pathway](#)
- [Pancreatic cancer](#)

- [Pathways in cancer](#)
- [Toll-like receptor signaling pathway](#)
- [Type II diabetes mellitus](#)
- [Wnt signaling pathway](#)

Disease

- [Breast cancer](#)
- [Breast Neoplasms](#)
- [Cardiovascular Diseases](#)
- [Diabetes Mellitus](#)
- [Edema](#)
- [Genetic Predisposition to Disease](#)
- [HIV Infections](#)