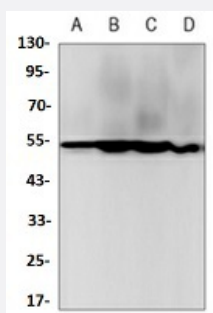


RecomAb™

TUBB recombinant monoclonal antibody

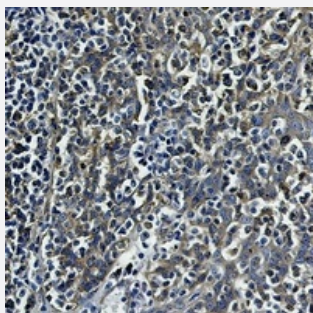
Catalog # RAB02475 Size 100 uL

Applications



Western Blot

Western blot analysis of rat brain (A), C6 (B), NIH3T3 (C), HeLa (D) whole cell lysates with Beta-tubulin recombinant monoclonal antibody (Cat # RAB02475).



Immunohistochemistry (Formalin/PFA-fixed paraffin-embedded sections)

Immunohistochemical analysis of human tonsil formalin fixed paraffin embedded tissue section using Beta-tubulin recombinant monoclonal antibody (Cat # RAB02475). The section was pre-treated using heat mediated antigen retrieval with sodium citrate buffer (pH 6.119). The section was then incubated with the antibody at room temperature and detected using an HRP conjugated compact polymer system. DAB was used as the chromogen. The section was then counterstained with haematoxylin and mounted with DPX.

Specification

Product Description	Rabbit recombinant monoclonal antibody raised against human TUBB.
Antibody Species	Rabbit
Immunogen	Original antibody is raised against a synthetic peptide of human beta Tubulin.
Theoretical MW (kDa)	55
Reactivity	Human, Mouse, Rat

Specificity	Recognizes endogenous levels of Beta-tubulin protein.
Form	Liquid
Purification	Immunogen affinity chromatography
Isotype	IgG
Recommend Usage	Immunohistochemistry (1:50-1:100) Immunoprecipitation(1:10-1:50) Western Blot (1:500-1:1000) The optimal working dilution should be determined by the end user.
Storage Buffer	In 50mM Tris-Glycine, pH 7.4 (0.15M NaCl, 50% Glycerol, 0.01% Sodium azide and 0.05% BSA)
Storage Instruction	Store at 4°C short term. Aliquot and store at -20°C long term. Avoid freeze-thaw cycles.
Note	This product contains sodium azide: a POISONOUS AND HAZARDOUS SUBSTANCE which should be handled by trained staff only.

Applications

- Western Blot

Western blot analysis of rat brain (A), C6 (B), NIH3T3 (C), Hela (D) whole cell lysates with Beta-tubulin recombinant monoclonal antibody (Cat # RAB02475).

- Immunohistochemistry (Formalin/PFA-fixed paraffin-embedded sections)

Immunohistochemical analysis of human tonsil formalin fixed paraffin embedded tissue section using Beta-tubulin recombinant monoclonal antibody (Cat # RAB02475). The section was pre-treated using heat mediated antigen retrieval with sodium citrate buffer (pH 6.119). The section was then incubated with the antibody at room temperature and detected using an HRP conjugated compact polymer system. DAB was used as the chromogen. The section was then counterstained with haematoxylin and mounted with DPX.

- Immunoprecipitation

Gene Info — TUBB

Entrez GeneID	203068
Protein Accession#	P07437
Gene Name	TUBB

Gene Alias	M40, MGC117247, MGC16435, OK/SW-cl.56, TUBB1, TUBB5
Gene Description	tubulin, beta
Omim ID	191130
Gene Ontology	Hyperlink
Gene Summary	O
Other Designations	OTTHUMP00000029069 beta 5-tubulin beta 1b tubulin beta-4 tubulin tubulin beta polypeptide tubulin beta-1 chain tubulin beta-5 chain tubulin, beta polypeptide

Pathway

- [Gap junction](#)
- [Pathogenic Escherichia coli infection - EHEC](#)

Disease

- [Breast cancer](#)
- [Breast Neoplasms](#)
- [Cerebral Hemorrhage](#)
- [Genetic Predisposition to Disease](#)
- [Lupus Erythematosus](#)
- [Narcolepsy](#)
- [Subarachnoid Hemorrhage](#)
- [Thrombosis](#)