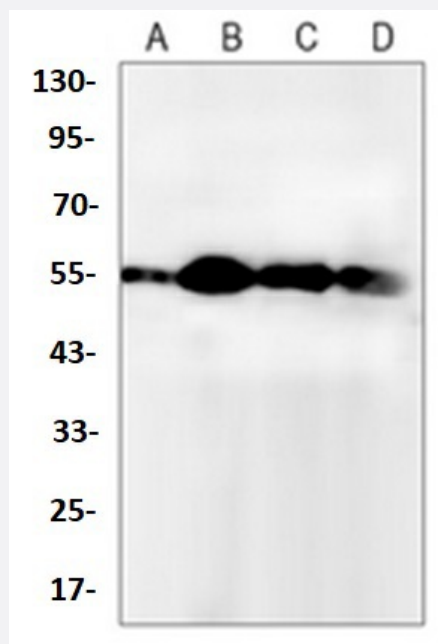


RecomAb™

ATG5 recombinant monoclonal antibody

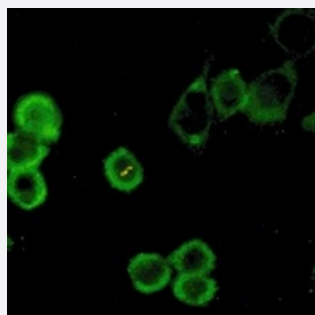
Catalog # RAB02469 Size 100 uL

Applications



Western Blot (Cell lysate)

Western blot analysis of Raw264.7 (A), K562 (B), C6 (C), HeLa (D) whole cell lysates with ATG5 recombinant monoclonal antibody (Cat # RAB02469).



Immunofluorescence

Immunofluorescent analysis of MCF7 cells with ATG5 recombinant monoclonal antibody (Cat # RAB02469). Formalin-fixed cells were permeabilized with 0.1% Triton X-100 in TBS for 5-10 minutes and blocked with 3% BSA-PBS for 30 minutes at room temperature. Cells were probed with the primary antibody in 3% BSA-PBS and incubated overnight at 4 °C in a humidified chamber. Cells were washed with PBST and incubated with a AF488-conjugated secondary antibody (green) in PBS at room temperature in the dark.

Specification

Product Description

Rabbit recombinant monoclonal antibody raised against human ATG5.

Antibody Species	Rabbit
Immunogen	Original antibody is raised against a synthetic peptide of human APG5L/ATG5.
Theoretical MW (kDa)	55
Reactivity	Human, Mouse, Rat
Specificity	Recognizes endogenous levels of ATG5 protein.
Form	Liquid
Purification	Immunogen affinity chromatography
Isotype	IgG
Recommend Usage	Immunocytochemistry (1:50-1:100) Immunofluorescence (1:50-1:100) Immunoprecipitation(1:10-1:50) Western Blot (1:500-1:1000) The optimal working dilution should be determined by the end user.
Storage Buffer	In 50mM Tris-Glycine, pH 7.4 (0.15M NaCl, 50% Glycerol, 0.01% Sodium azide and 0.05% BSA)
Storage Instruction	Store at 4°C short term. Aliquot and store at -20°C long term. Avoid freeze-thaw cycles.
Note	This product contains sodium azide: a POISONOUS AND HAZARDOUS SUBSTANCE which should be handled by trained staff only.

Applications

- Western Blot (Cell lysate)

Western blot analysis of Raw264.7 (A), K562 (B), C6 (C), Hela (D) whole cell lysates with ATG5 recombinant monoclonal antibody (Cat # RAB02469).

- Immunocytochemistry

- Immunofluorescence

Immunofluorescent analysis of MCF7 cells with ATG5 recombinant monoclonal antibody (Cat # RAB02469). Formalin-fixed cells were permeabilized with 0.1% Triton X-100 in TBS for 5-10 minutes and blocked with 3% BSA-PBS for 30 minutes at room temperature. Cells were probed with the primary antibody in 3% BSA-PBS and incubated overnight at 4 °C in a humidified chamber. Cells were washed with PBST and incubated with a AF488-conjugated secondary antibody (green) in PBS at room temperature in the dark.

- Immunoprecipitation

Gene Info — ATG5

Entrez GeneID	9474
Protein Accession#	Q9H1Y0
Gene Name	ATG5
Gene Alias	APG5, APG5-LIKE, APG5L, ASP, hAPG5
Gene Description	ATG5 autophagy related 5 homolog (S. cerevisiae)
Omim ID	604261
Gene Ontology	Hyperlink
Gene Summary	S. cerevisiae)-like APG5 autophagy 5-like ATG5 autophagy related 5-like OTTHUMP00000017823 OTTHUMP00000017824 OTTHUMP00000040507 apoptosis specific protein
Other Designations	APG5 (autophagy 5, S. cerevisiae)-like APG5 autophagy 5-like ATG5 autophagy related 5-like OTTHUMP00000017823 OTTHUMP00000017824 OTTHUMP00000040507 apoptosis specific protein

Pathway

- [Regulation of autophagy](#)

Disease

- [Adenocarcinoma](#)
- [Colorectal Neoplasms](#)
- [Huntington Disease](#)
- [Microsatellite Instability](#)
- [Stomach Neoplasms](#)
- [Tobacco Use Disorder](#)