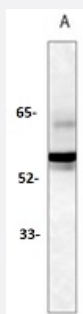


RecomAb™

SMAD2 (Phospho S255) recombinant monoclonal antibody

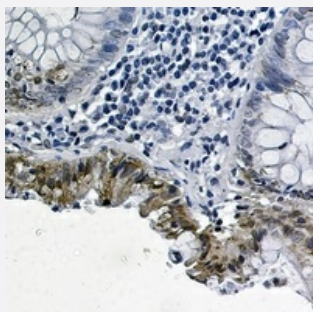
Catalog # RAB02457 Size 100 uL

Applications



Western Blot (Cell lysate)

Western blot analysis of K562 (A) whole cell lysates with SMAD2 (Phospho S255) recombinant monoclonal antibody (Cat # RAB02457).



Immunohistochemistry (Formalin/PFA-fixed paraffin-embedded sections)

Immunohistochemical analysis of human colon cancer formalin fixed paraffin embedded tissue section using SMAD2 (Phospho S255) recombinant monoclonal antibody (Cat # RAB02457). The section was pre-treated using heat mediated antigen retrieval with sodium citrate buffer (pH 6.52). The section was then incubated with the antibody at room temperature and detected using an HRP conjugated compact polymer system. DAB was used as the chromogen. The section was then counterstained with haematoxylin and mounted with DPX.

Specification

Product Description	Rabbit recombinant monoclonal antibody raised against human SMAD2.
Antibody Species	Rabbit
Immunogen	Original antibody is raised against a synthetic phosphopeptide corresponding to residues surrounding Ser255 of human Smad2.
Theoretical MW (kDa)	55

Reactivity	Human
Specificity	Recognizes endogenous levels of SMAD2 (pS255) protein.
Form	Liquid
Purification	Immunogen affinity chromatography
Isotype	IgG
Recommend Usage	Immunohistochemistry (1:50-1:100) Immunoprecipitation(1:10-1:50) Western Blot (1:500-1:1000) The optimal working dilution should be determined by the end user.
Storage Buffer	In 50mM Tris-Glycine, pH 7.4 (0.15M NaCl, 50% Glycerol, 0.01% Sodium azide and 0.05% BSA)
Storage Instruction	Store at 4°C short term. Aliquot and store at -20°C long term. Avoid freeze-thaw cycles.
Note	This product contains sodium azide: a POISONOUS AND HAZARDOUS SUBSTANCE which should be handled by trained staff only.

Applications

- Western Blot (Cell lysate)

Western blot analysis of K562 (A) whole cell lysates with SMAD2 (Phospho S255) recombinant monoclonal antibody (Cat # RAB02457).

- Immunohistochemistry (Formalin/PFA-fixed paraffin-embedded sections)

Immunohistochemical analysis of human colon cancer formalin fixed paraffin embedded tissue section using SMAD2 (Phospho S255) recombinant monoclonal antibody (Cat # RAB02457). The section was pre-treated using heat mediated antigen retrieval with sodium citrate buffer (pH 6.52). The section was then incubated with the antibody at room temperature and detected using an HRP conjugated compact polymer system. DAB was used as the chromogen. The section was then counterstained with haematoxylin and mounted with DPX.

- Immunoprecipitation

Gene Info — SMAD2

Entrez GeneID	4087
Protein Accession#	Q15796

Gene Name	SMAD2
Gene Alias	JV18, JV18-1, MADH2, MADR2, MGC22139, MGC34440, hMAD-2, hSMAD2
Gene Description	SMAD family member 2
Omim ID	601366
Gene Ontology	Hyperlink
Gene Summary	<p>The protein encoded by this gene belongs to the SMAD, a family of proteins similar to the gene products of the Drosophila gene 'mothers against decapentaplegic' (Mad) and the C. elegans gene Sma. SMAD proteins are signal transducers and transcriptional modulators that mediate multiple signaling pathways. This protein mediates the signal of the transforming growth factor (TGF)-beta, and thus regulates multiple cellular processes, such as cell proliferation, apoptosis, and differentiation. This protein is recruited to the TGF-beta receptors through its interaction with the SMAD anchor for receptor activation (SARA) protein. In response to TGF-beta signal, this protein is phosphorylated by the TGF-beta receptors. The phosphorylation induces the dissociation of this protein with SARA and the association with the family member SMAD4. The association with SMAD4 is important for the translocation of this protein into the nucleus, where it binds to target promoters and forms a transcription repressor complex with other cofactors. This protein can also be phosphorylated by activin type 1 receptor kinase, and mediates the signal from the activin. Alternatively spliced transcript variants encoding the same protein have been observed. [provided by RefSeq]</p>
Other Designations	MAD, mothers against decapentaplegic homolog 2 Mad protein homolog Mad, mothers against decapentaplegic homolog 2 Mad-related protein 2 SMAD, mothers against DPP homolog 2 Sma- and Mad-related protein 2 mother against DPP homolog 2

Pathway

- [Adherens junction](#)
- [Cell cycle](#)
- [Colorectal cancer](#)
- [Pancreatic cancer](#)
- [Pathways in cancer](#)
- [TGF-beta signaling pathway](#)
- [Wnt signaling pathway](#)

Disease

- [Adenocarcinoma](#)

- [Cleft Lip](#)
- [Cleft Palate](#)
- [Colitis](#)
- [Colorectal Neoplasms](#)
- [Esophageal Neoplasms](#)
- [Genetic Predisposition to Disease](#)
- [Hypertension](#)
- [Inflammatory Bowel Diseases](#)
- [Liver Cirrhosis](#)
- [Obesity](#)
- [Osteoporosis](#)
- [Ovarian Failure](#)
- [Pancreatic cancer](#)
- [Pancreatic Neoplasms](#)
- [Polycystic Ovary Syndrome](#)
- [Puberty](#)
- [Thrombophilia](#)
- [Tobacco Use Disorder](#)