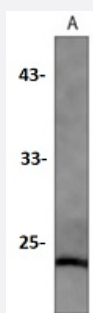


RecomAb™

Caveolin 1 recombinant monoclonal antibody

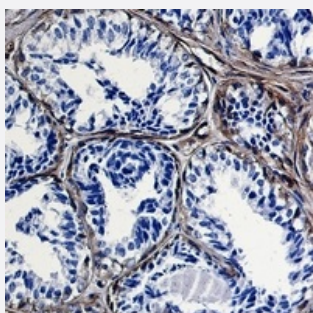
Catalog # RAB02423 Size 100 uL

Applications



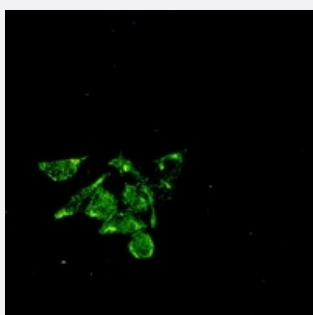
Western Blot (Cell lysate)

Western blot analysis of HeLa (A) whole cell lysates with Caveolin 1 recombinant monoclonal antibody (Cat # RAB02423).



Immunohistochemistry (Formalin/PFA-fixed paraffin-embedded sections)

Immunohistochemical analysis of human breast carcinoma formalin fixed paraffin embedded tissue section using Caveolin 1 recombinant monoclonal antibody (Cat # RAB02423). The section was pre-treated using heat mediated antigen retrieval with sodium citrate buffer (pH 6.4). The section was then incubated with the antibody at room temperature and detected using an HRP conjugated compact polymer system. DAB was used as the chromogen. The section was then counterstained with haematoxylin and mounted with DPX.



Immunofluorescence

Immunofluorescent analysis of HeLa cells with Caveolin 1 recombinant monoclonal antibody (Cat # RAB02423). Formalin-fixed cells were permeabilized with 0.1% Triton X-100 in TBS for 5-10 minutes and blocked with 3% BSA-PBS for 30 minutes at room temperature. Cells were probed with the primary antibody in 3% BSA-PBS and incubated overnight at 4 °C in a humidified chamber. Cells were washed with PBST and incubated with a AF488-conjugated secondary antibody (green) in PBS at room temperature in the dark.

Specification

Product Description	Rabbit recombinant monoclonal antibody raised against recombinant Caveolin 1.
Antibody Species	Rabbit
Immunogen	Original antibody is raised against recombinant protein of human Caveolin-1.
Theoretical MW (kDa)	22
Reactivity	Human
Specificity	Recognizes endogenous levels of Caveolin 1 protein.
Form	Liquid
Purification	Immunogen affinity chromatography
Isotype	IgG
Recommend Usage	Immunocytochemistry (1:50-1:100) Immunofluorescence (1:50-1:100) Immunohistochemistry (1:50-1:100) Immunoprecipitation(1:10-1:50) Western Blot (1:500-1:1000)
Storage Buffer	In 50mM Tris-Glycine, pH 7.4 (0.15M NaCl, 50% Glycerol, 0.01% Sodium azide and 0.05% BSA)
Storage Instruction	Store at 4°C short term. Aliquot and store at -20°C long term. Avoid freeze-thaw cycles.
Note	This product contains sodium azide: a POISONOUS AND HAZARDOUS SUBSTANCE which should be handled by trained staff only.

Applications

- Western Blot (Cell lysate)

Western blot analysis of Hela (A) whole cell lysates with Caveolin 1 recombinant monoclonal antibody (Cat # RAB02423).

- Immunohistochemistry (Formalin/PFA-fixed paraffin-embedded sections)

Immunohistochemical analysis of human breast carcinoma formalin fixed paraffin embedded tissue section using Caveolin 1 recombinant monoclonal antibody (Cat # RAB02423). The section was pre-treated using heat mediated antigen retrieval with sodium citrate buffer (pH 6.4). The section was then incubated with the antibody at room temperature and detected using an HRP conjugated compact polymer system. DAB was used as the chromogen. The section was then counterstained with haematoxylin and mounted with DPX.

- Immunocytochemistry
- Immunofluorescence

Immunofluorescent analysis of HeLa cells with Caveolin 1 recombinant monoclonal antibody (Cat # RAB02423). Formalin-fixed cells were permeabilized with 0.1% Triton X-100 in TBS for 5-10 minutes and blocked with 3% BSA-PBS for 30 minutes at room temperature. Cells were probed with the primary antibody in 3% BSA-PBS and incubated overnight at 4 °C in a humidified chamber. Cells were washed with PBST and incubated with a AF488-conjugated secondary antibody (green) in PBS at room temperature in the dark.

- Immunoprecipitation

Gene Info — CAV1

Entrez GeneID [857](#)

Protein Accession# [Q03135](#)

Gene Name CAV1

Gene Alias BSCL3, CAV, CGL3, MSTP085, VIP21

Gene Description caveolin 1, caveolae protein, 22kDa

Omim ID [601047](#)

Gene Ontology [Hyperlink](#)

Gene Summary The scaffolding protein encoded by this gene is the main component of the caveolae plasma membranes found in most cell types. The protein links integrin subunits to the tyrosine kinase FYN, a n initiating step in coupling integrins to the Ras-ERK pathway and promoting cell cycle progression. The gene is a tumor suppressor gene candidate and a negative regulator of the Ras-p42/44 MAP kinase cascade. CAV1 and CAV2 are located next to each other on chromosome 7 and express colocalizing proteins that form a stable hetero-oligomeric complex. By using alternative initiation codons in the same reading frame, two isoforms (alpha and beta) are encoded by a single transcript from this gene. [provided by RefSeq]

Other Designations OTTHUMP00000025031|caveolae protein, 22-kD|caveolin 1|caveolin 1 caveolae protein, 22kD|caveolin 1, alpha isoform|caveolin 1, beta isoform|caveolin-1 beta isoform protein|cell growth-inhibiting protein 32

Pathway

- [Focal adhesion](#)

Disease

- [Alzheimer disease](#)
- [Amyotrophic lateral sclerosis](#)
- [Anoxia](#)
- [Arrhythmias](#)
- [Atherosclerosis](#)
- [Atrial Fibrillation](#)
- [Atrioventricular Block](#)
- [Breast Neoplasms](#)
- [Calcinosis](#)
- [Carcinoma](#)
- [Cardiovascular Diseases](#)
- [Colorectal Neoplasms](#)
- [Coronary Artery Disease](#)
- [Diabetes Mellitus](#)
- [Edema](#)
- [Fibrosis](#)
- [Genetic Predisposition to Disease](#)
- [Glaucoma](#)
- [Head and Neck Neoplasms](#)
- [Hypertension](#)
- [Liver Cirrhosis](#)
- [Lung Neoplasms](#)
- [Metabolic Syndrome X](#)
- [Multiple Sclerosis](#)

- [Neoplasm Recurrence](#)
- [Neoplasms](#)
- [Prostate cancer](#)
- [Prostatic Neoplasms](#)
- [Pulmonary Disease](#)
- [Sick Sinus Syndrome](#)
- [Thrombosis](#)
- [Urinary Bladder Neoplasms](#)
- [Werner syndrome](#)