

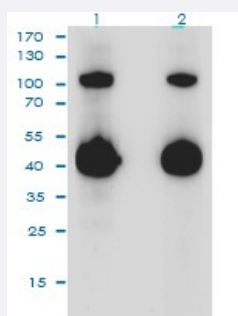
NanoAb™

RecomAb™

# Camelid VHH recombinant monoclonal antibody cocktail (HRP)

Catalog # RAB02384      Size 200 uL

## Applications

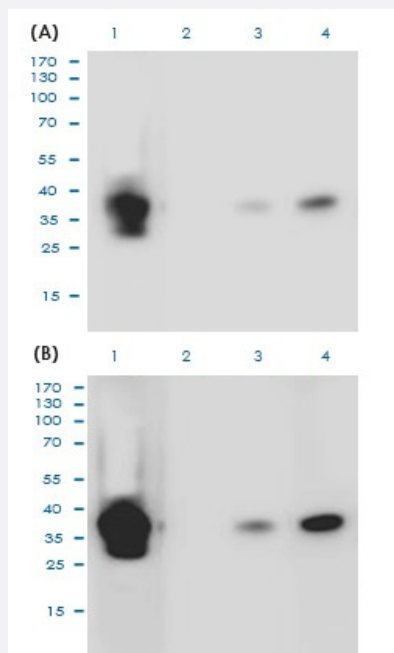


### Western Blot

Western Blot analysis of CD8A VHH-hlgG1 humanized monoclonal antibody, clone B ([RAB01120-M03J](#)).

Lane 1: Goat Anti-Human Ig FC HRP (5000X).

Lane 2: Camelid VHH recombinant monoclonal antibody cocktail (HRP) (1000X)(Cat # RAB02384).



### Western Blot (Recombinant protein)

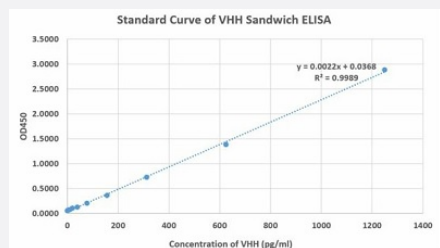
Western Blot analysis of CD8A Protein (0.2ug) with exposure time (A) 30 seconds (B) 90 seconds.

Lane 1: (1st Ab) Mouse Anti-HIS clone HIS.H8 (1ug/ml) and (2nd Ab) Jackson anti-mouse IgG-HRP (5000X).

Lane 2: (1st Ab) 2% milk in 0.2% PBST and (2nd Ab) Goat Anti-Human Ig FC HRP (5000X)

Lane 3: (1st Ab) CD8A VHH-hlgG1 humanized monoclonal antibody, clone B5 (1ug) and (2nd Ab) Goat Anti-Human Ig FC HRP (5000X)

Lane 4: (1st Ab) CD8A VHH-hlgG1 humanized monoclonal antibody, clone B5 (1ug) and (2nd Ab) Camelid VHH recombinant monoclonal antibody cocktail (HRP) (1000X)(Cat # RAB02384).



Sandwich ELISA is developed by using Camelid VHH recombinant monoclonal antibody, clone 96A3F5 (Cat # RAB02367) and Camelid VHH recombinant monoclonal antibody cocktail (HRP)(Cat # RAB02384) as the capture and detection antibodies, respectively.

## Specification

<b>Product Description</b>	Rabbit recombinant monoclonal antibody cocktail raised against camelid VHH antibody (llama, alpaca, and camel).
<b>Antibody Species</b>	Rabbit
<b>Immunogen</b>	Original antibody is raised against llama VHH antibody
<b>Reactivity</b>	Camelid
<b>Specificity</b>	Rabbit Anti-Camelid VHH Antibody cocktail is specific for camelid sdAb (llama and camel). It has no cross-reactivity with mouse, rat, rabbit, goat or human immunoglobulins.
<b>Form</b>	Liquid
<b>Purification</b>	Protein A affinity purification
<b>Isotype</b>	IgG
<b>Quality Control Testing</b>	Standard Curve Sandwich ELISA is developed by using Camelid VHH recombinant monoclonal antibody, clone 96A3F5 (Cat # RAB02367) and Camelid VHH recombinant monoclonal antibody cocktail (HRP)(Cat # RAB02384) as the capture and detection antibodies, respectively.
<b>Recommend Usage</b>	ELISA (1:5,000-1:10,000) Sandwich ELISA Western blot (1:1,000-1:5,000) The following concentration ranges are recommended starting points for this product. Optimal working dilutions must be determined by the end user.
<b>Storage Buffer</b>	In PBS, pH 7.4 (10 mg/mL BSA, 0.01% thimerosal and 50% glycerol)
<b>Storage Instruction</b>	Store at -20°C. This product is stable for 1 year upon receipt, when handled and stored as instructed.
<b>Note</b>	This product contains thimerosal: a POISONOUS AND HAZARDOUS SUBSTANCE which should be handled by trained staff only.

## Applications

- Western Blot

Western Blot analysis of CD8A VHH-hlgG1 humanized monoclonal antibody, clone B ([RAB01120-M03J](#)).

Lane 1: Goat Anti-Human Ig FC HRP (5000X).

Lane 2: Camelid VHH recombinant monoclonal antibody cocktail (HRP) (1000X)(Cat # RAB02384).

- Western Blot

- Western Blot (Recombinant protein)

Western Blot analysis of CD8A Protein (0.2ug) with exposure time (A) 30 seconds (B) 90 seconds.

Lane 1: (1st Ab) Mouse Anti-HIS clone HIS.H8 (1ug/ml) and (2nd Ab) Jackson anti-mouse IgG-HRP (5000X).

Lane 2: (1st Ab) 2% milk in 0.2% PBST and (2nd Ab) Goat Anti-Human Ig FC HRP (5000X)

Lane 3: (1st Ab) CD8A VHH-hlgG1 humanized monoclonal antibody, clone B5 (1ug) and (2nd Ab) Goat Anti-Human Ig FC HRP (5000X)

Lane 4: (1st Ab) CD8A VHH-hlgG1 humanized monoclonal antibody, clone B5 (1ug) and (2nd Ab) Camelid VHH recombinant monoclonal antibody cocktail (HRP) (1000X)(Cat # RAB02384).

- Enzyme-linked Immunoabsorbent Assay

- Sandwich ELISA