

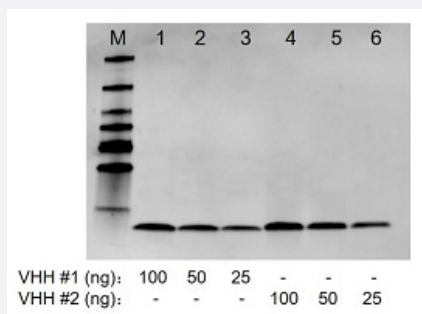
NanoAb™

RecomAb™

Camelid VHH recombinant monoclonal antibody cocktail

Catalog # RAB02383 Size 200 uL

Applications



Western Blot

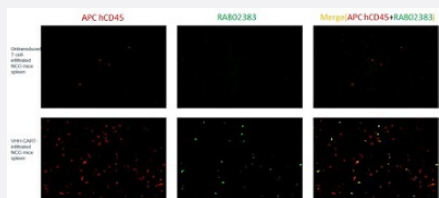
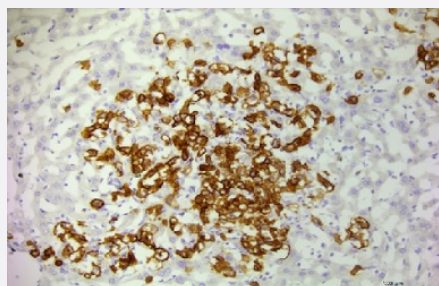
Western blot analysis of different VHHs with Camelid VHH recombinant monoclonal antibody cocktail (Cat # RAB02383).

Immunohistochemistry (Formalin/PFA-fixed paraffin-embedded sections)

Immunohistochemical staining (Formalin-fixed paraffin-embedded sections) of VHH transduced CAR-T cells infiltrated liver tissue of PDX mouse with Camelid VHH recombinant monoclonal antibody cocktail (Cat # RAB02383). VHH was labelled with this antibody at 1 ug/mL, followed by incubation with biotinylated anti-rabbit IgG (H+L) (2.5 ug/mL). The final signal was amplified by ABC (Avidin-Biotin Complex) Kit.

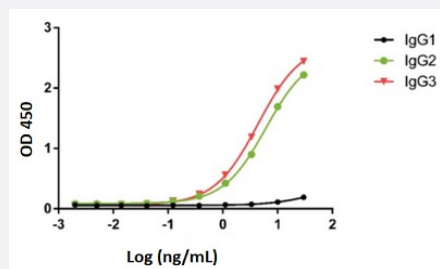
Immunofluorescence

Immunofluorescent staining of VHH transduced CAR-T cells infiltrated NCG mouse spleen with Camelid VHH recombinant monoclonal antibody cocktail (Cat # RAB02383). VHH was labelled with Camelid VHH recombinant monoclonal antibody cocktail (Cat # RAB02383) at 0.5 ug/mL, and anti-rabbit IgG (H+L) (Alexa Fluor 488) was used as secondary antibody at 1/500 concentration (4 ug/mL; green). APC hCD45 monoclonal antibody was used to define all infused T cells at 1/50 concentration (0.5 ug/mL; red). Confocal images showed cytoplasmic staining in infiltrated VHH-transduced CAR-T cells in the NCG mouse spleen.

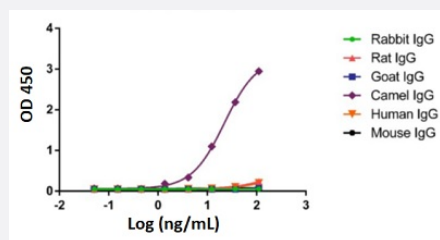


Enzyme-linked Immunoabsorbent Assay

ELISA binding of Camelid VHH recombinant monoclonal antibody cocktail (Cat # RAB02383) with camelid IgG1, IgG2, and IgG3. The results show that this antibody is specific to camelid heavy chain antibodies (IgG2 & 3), but not to the camelid conventional antibody (IgG1).



The ELISA results show that Camelid VHH recombinant monoclonal antibody cocktail (Cat # RAB02383) is specific to camelid IgG and has no cross-reactivity with mouse, rat, rabbit, goat and human immunoglobulins.



Specification

Product Description	Rabbit recombinant monoclonal antibody cocktail raised against camelid VHH antibody (llama, alpaca, and camel).
Antibody Species	Rabbit
Immunogen	Original antibody is raised against llama VHH antibody
Reactivity	Camelid
Specificity	Rabbit Anti-Camelid VHH Antibody cocktail is specific for camelid VHH antibody (llama, alpaca, and camel). It has no cross-reactivity with mouse, rat, rabbit, goat or human immunoglobulins.
Form	Liquid
Purification	Protein A affinity purification
Isotype	IgG
Quality Control Testing	<p>Cross-reactivity test</p> <p>The ELISA results show that Camelid VHH recombinant monoclonal antibody cocktail (Cat # RAB02383) is specific to camelid IgG and has no cross-reactivity with mouse, rat, rabbit, goat and human immunoglobulins.</p>

Recommend Usage	ELISA (1:5,000-1:10,000) Immunohistochemistry (1 ug/mL) Immunocytochemistry/Immunofluorescence (0.5 ug/mL) Sandwich ELISA Western blot (1:1,000-1:5,000) The following concentration ranges are recommended starting points for this product. Optimal working dilutions must be determined by the end user.
Storage Buffer	In PBS, pH 7.4 (0.02% sodium azide and 50% glycerol)
Storage Instruction	Store at -20°C. This product is stable for 1 year upon receipt, when handled and stored as instructed.
Note	This product contains sodium azide: a POISONOUS AND HAZARDOUS SUBSTANCE which should be handled by trained staff only.

Applications

- Western Blot

Western blot analysis of different VHHs with Camelid VHH recombinant monoclonal antibody cocktail (Cat # RAB02383).

- Immunohistochemistry (Formalin/PFA-fixed paraffin-embedded sections)

Immunohistochemical staining (Formalin-fixed paraffin-embedded sections) of VHH transduced CAR-T cells infiltrated liver tissue of PDX mouse with Camelid VHH recombinant monoclonal antibody cocktail (Cat # RAB02383). VHH was labelled with this antibody at 1 ug/mL, followed by incubation with biotinylated anti-rabbit IgG (H+L) (2.5 ug/mL). The final signal was amplified by ABC (Avidin-Biotin Complex) Kit.

- Immunofluorescence

Immunofluorescent staining of VHH transduced CAR-T cells infiltrated NCG mouse spleen with Camelid VHH recombinant monoclonal antibody cocktail (Cat # RAB02383). VHH was labelled with Camelid VHH recombinant monoclonal antibody cocktail (Cat # RAB02383) at 0.5 ug/mL, and anti-rabbit IgG (H+L) (Alexa Fluor 488) was used as secondary antibody at 1/500 concentration (4 ug/mL; green). APC hCD45 monoclonal antibody was used to define all infused T cells at 1/50 concentration (0.5 ug/mL; red). Confocal images showed cytoplasmic staining in infiltrated VHH-transduced CAR-T cells in the NCG mouse spleen.

- Enzyme-linked Immunoabsorbent Assay

ELISA binding of Camelid VHH recombinant monoclonal antibody cocktail (Cat # RAB02383) with camelid IgG1, IgG2, and IgG3. The results show that this antibody is specific to camelid heavy chain antibodies (IgG2 & 3), but not to the camelid conventional antibody (IgG1).

- Sandwich ELISA