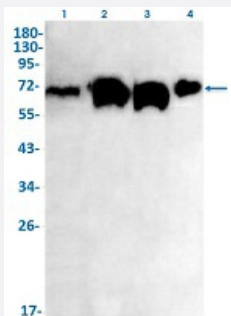


RecomAb™

CPSF6 recombinant monoclonal antibody, clone R05-6K1

Catalog # RAB02364 Size 100 uL

Applications



Western Blot

Western Blot analysis of Lane 1: rat brain, Lane 2: MCF-7, Lane 3: 3T3 and Lane 4: C6 lysates with CPSF6 recombinant monoclonal antibody, clone R05-6K1 (Cat # RAB02364).

Specification

Product Description	Rabbit recombinant monoclonal antibody raised against human CPSF6.
Antibody Species	Rabbit
Immunogen	Original antibody is raised against a synthetic peptide corresponding to human CPSF6.
Theoretical MW (kDa)	Calculated MW: 59 kD
Reactivity	Human, Mouse, Rat
Form	Liquid
Purification	Affinity purification
Isotype	IgG
Recommend Usage	Immunofluorescence(1:50-1:200) Immunohistochemistry (1:50-1:100) Immunoprecipitation(1:20) Western Blot (1:500-1:1000) The optimal working dilution should be determined by the end user.

Storage Buffer	In 50 mM Tris-Glycine, pH 7.4 (0.15 M NaCl, 40% Glycerol, 0.01% Sodium azide and 0.05% BSA)
Storage Instruction	Store at -20 °C. Aliquot to avoid repeated freezing and thawing.
Note	This product contains sodium azide: a POISONOUS AND HAZARDOUS SUBSTANCE which should be handled by trained staff only.

Applications

- Western Blot

Western Blot analysis of Lane 1: rat brain, Lane 2: MCF-7, Lane 3: 3T3 and Lane 4: C6 lysates with CPSF6 recombinant monoclonal antibody, clone R05-6K1 (Cat # RAB02364).

- Immunohistochemistry

- Immunofluorescence

- Immunoprecipitation

Gene Info — CPSF6

Entrez GeneID	11052
---------------	-----------------------

Protein Accession#	Q16630
--------------------	------------------------

Gene Name	CPSF6
-----------	-------

Gene Alias	CFIM, CFIM68, HPBRIL-4, HPBRIL-7
------------	----------------------------------

Gene Description	cleavage and polyadenylation specific factor 6, 68kDa
------------------	---

Omim ID	604979
---------	------------------------

Gene Ontology	Hyperlink
---------------	---------------------------

Gene Summary	The protein encoded by this gene is one subunit of a cleavage factor required for 3' RNA cleavage and polyadenylation processing. The interaction of the protein with the RNA is one of the earliest steps in the assembly of the 3' end processing complex and facilitates the recruitment of other processing factors. The cleavage factor complex is composed of four polypeptides. This gene encodes the 68kD subunit. It has a domain organization reminiscent of spliceosomal proteins. [provided by RefSeq]
--------------	--

Other Designations

cleavage and polyadenylation specific factor 6, 68 kD subunit|cleavage and polyadenylation specific factor 6, 68kD subunit|pre-mRNA cleavage factor I, 68kD subunit|pre-mRNA cleavage factor I m (68kD)
