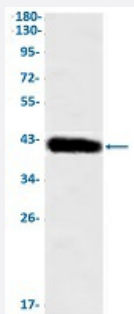


RecomAb™

KRT19 recombinant monoclonal antibody, clone R07-2G5

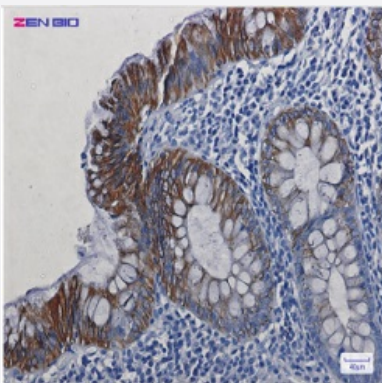
Catalog # RAB02338 Size 100 uL

Applications



Western Blot

Western Blot analysis of rat brain lysates with KRT19 recombinant monoclonal antibody, clone R07-2G5 (Cat # RAB02338).



Immunohistochemistry (Formalin/PFA-fixed paraffin-embedded sections)

Immunohistochemical staining (Formalin-fixed paraffin-embedded sections) of human colon cancer with KRT19 recombinant monoclonal antibody, clone R07-2G5 (Cat # RAB02338). High-pressure and temperature Sodium Citrate pH 6.0 was used for antigen retrieval.

Specification

Product Description	Rabbit recombinant monoclonal antibody raised against human KRT19.
Antibody Species	Rabbit
Immunogen	Original antibody is raised against a synthetic peptide corresponding to human KRT19.
Theoretical MW (kDa)	Calculated MW: 44 kD
Reactivity	Human, Rat

Form	Liquid
Purification	Affinity purification
Isotype	IgG
Recommend Usage	Immunofluorescence (1:50-1:200) Immunohistochemistry (1:50-1:100) Immunoprecipitation (1:20) Western Blot (1:500-1:1000) The optimal working dilution should be determined by the end user.
Storage Buffer	In 50 mM Tris-Glycine, pH 7.4 (0.15 M NaCl, 40% Glycerol, 0.01% Sodium azide and 0.05% BSA)
Storage Instruction	Store at -20 °C. Aliquot to avoid repeated freezing and thawing.
Note	This product contains sodium azide: a POISONOUS AND HAZARDOUS SUBSTANCE which should be handled by trained staff only.

Applications

- Western Blot

Western Blot analysis of rat brain lysates with KRT19 recombinant monoclonal antibody, clone R07-2G5 (Cat # RAB02338).

- Immunohistochemistry (Formalin/PFA-fixed paraffin-embedded sections)

Immunohistochemical staining (Formalin-fixed paraffin-embedded sections) of human colon cancer with KRT19 recombinant monoclonal antibody, clone R07-2G5 (Cat # RAB02338). High-pressure and temperature Sodium Citrate pH 6.0 was used for antigen retrieval.

- Immunohistochemistry (Frozen sections)

- Immunofluorescence

- Immunoprecipitation

Gene Info — KRT19

Entrez GeneID	3880
Protein Accession#	P08727
Gene Name	KRT19

Gene Alias	CK19, K19, K1CS, MGC15366
Gene Description	keratin 19
Omim ID	148020
Gene Ontology	Hyperlink
Gene Summary	<p>The protein encoded by this gene is a member of the keratin family. The keratins are intermediate filament proteins responsible for the structural integrity of epithelial cells and are subdivided into cytokeratins and hair keratins. The type I cytokeratins consist of acidic proteins which are arranged in pairs of heterotypic keratin chains. Unlike its related family members, this smallest known acidic cytokeratin is not paired with a basic cytokeratin in epithelial cells. It is specifically expressed in the periderm, the transiently superficial layer that envelopes the developing epidermis. The type I cytokeratins are clustered in a region of chromosome 17q12-q21. [provided by RefSeq]</p>
Other Designations	40-kDa keratin intermediate filament cytokeratin 19 keratin, type I cytoskeletal 19 keratin, type I, 40-kd

Disease

- [Liver Cirrhosis](#)