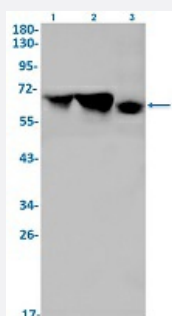


RecomAb™

# DDX5 recombinant monoclonal antibody, clone R04-2K2

Catalog # RAB02326      Size 100 uL

## Applications



### Western Blot

Western Blot analysis of Lane 1: C6, Lane 2: 3T3 and Lane 3: Hela lysates with DDX5 recombinant monoclonal antibody, clone R04-2K2 (Cat # RAB02326).

## Specification

<b>Product Description</b>	Rabbit recombinant monoclonal antibody raised against human DDX5.
<b>Antibody Species</b>	Rabbit
<b>Immunogen</b>	Original antibody is raised against a synthetic peptide corresponding to human DDX5.
<b>Theoretical MW (kDa)</b>	Calculated MW: 69 kD
<b>Reactivity</b>	Human, Mouse, Rat
<b>Form</b>	Liquid
<b>Purification</b>	Affinity purification
<b>Isotype</b>	IgG
<b>Recommend Usage</b>	Immunofluorescence (1:50-1:200) Immunohistochemistry (1:50-1:100) Immunoprecipitation (1:20) Western Blot (1:500-1:1000) The optimal working dilution should be determined by the end user.

Storage Buffer	In 50 mM Tris-Glycine, pH 7.4 (0.15 M NaCl, 40% Glycerol, 0.01% Sodium azide and 0.05% BSA)
Storage Instruction	Store at -20 °C. Aliquot to avoid repeated freezing and thawing.
Note	This product contains sodium azide: a POISONOUS AND HAZARDOUS SUBSTANCE which should be handled by trained staff only.

## Applications

- Western Blot

Western Blot analysis of Lane 1: C6, Lane 2: 3T3 and Lane 3: Hela lysates with DDX5 recombinant monoclonal antibody, clone R04-2K2 (Cat # RAB02326).

- Immunohistochemistry

- Immunofluorescence

- Immunoprecipitation

## Gene Info — DDX5

Entrez GeneID	<a href="#">1655</a>
Protein Accession#	<a href="#">P17844</a>
Gene Name	DDX5
Gene Alias	DKFZp434E109, DKFZp686J01190, G17P1, HLR1, HUMP68, p68
Gene Description	DEAD (Asp-Glu-Ala-Asp) box polypeptide 5
Omim ID	<a href="#">180630</a>
Gene Ontology	<a href="#">Hyperlink</a>

**Gene Summary**

DEAD box proteins, characterized by the conserved motif Asp-Glu-Ala-Asp (DEAD), are putative RNA helicases. They are implicated in a number of cellular processes involving alteration of RNA secondary structure, such as translation initiation, nuclear and mitochondrial splicing, and ribosome and spliceosome assembly. Based on their distribution patterns, some members of this family are believed to be involved in embryogenesis, spermatogenesis, and cellular growth and division. This gene encodes a DEAD box protein, which is a RNA-dependent ATPase, and also a proliferation-associated nuclear antigen, specifically reacting with the simian virus 40 tumor antigen. This gene consists of 13 exons, and alternatively spliced transcripts containing several intron sequences have been detected, but no isoforms encoded by these transcripts have been identified. [provided by RefSeq]

**Other Designations**

ATP-dependent RNA helicase DDX5|DEAD box-5|DEAD/H (Asp-Glu-Ala-Asp/His) box polypeptide 5 (RNA helicase, 68kD)

**Disease**

- [Disease Progression](#)
- [Genetic Predisposition to Disease](#)
- [Hepatitis C](#)
- [Kidney Failure](#)
- [Liver Cirrhosis](#)