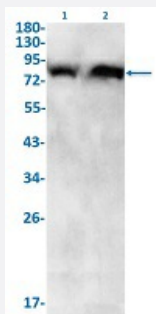


RecomAb™

GSN recombinant monoclonal antibody, clone R06-4B4

Catalog # RAB02259 Size 100 uL

Applications



Western Blot

Western Blot analysis of Lane 1: MCF-7 and Lane 2: 3T3 lysates with GSN recombinant monoclonal antibody, clone R06-4B4 (Cat # RAB02259).

Specification

Product Description	Rabbit recombinant monoclonal antibody raised against human GSN.
Antibody Species	Rabbit
Immunogen	Original antibody is raised against a synthetic peptide corresponding to human GSN.
Theoretical MW (kDa)	Calculated MW: 86 kD
Reactivity	Human, Mouse
Form	Liquid
Purification	Affinity purification
Isotype	IgG
Recommend Usage	Immunofluorescence (1:50-1:200) Immunohistochemistry (1:50-1:100) Western Blot (1:500-1:1000) The optimal working dilution should be determined by the end user.
Storage Buffer	In 50 mM Tris-Glycine, pH 7.4 (0.15 M NaCl, 40% Glycerol, 0.01% Sodium azide and 0.05% BSA)

Storage Instruction

Store at -20 °C.
Aliquot to avoid repeated freezing and thawing.

Note

This product contains sodium azide: a POISONOUS AND HAZARDOUS SUBSTANCE which should be handled by trained staff only.

Applications

- Western Blot

Western Blot analysis of Lane 1: MCF-7 and Lane 2: 3T3 lysates with GSN recombinant monoclonal antibody, clone R06-4B4 (Cat # RAB02259).

- Immunohistochemistry

- Immunofluorescence

Gene Info — GSN

Entrez GeneID [2934](#)

Protein Accession# [P06396](#)

Gene Name GSN

Gene Alias DKFZp313L0718

Gene Description gelsolin (amyloidosis, Finnish type)

Omim ID [105120](#) [137350](#)

Gene Ontology [Hyperlink](#)

Gene Summary The protein encoded by this gene binds to the "plus" ends of actin monomers and filaments to prevent monomer exchange. The encoded calcium-regulated protein functions in both assembly and disassembly of actin filaments. Defects in this gene are a cause of familial amyloidosis Finnish type (FAF). Multiple transcript variants encoding several different isoforms have been found for this gene. [provided by RefSeq]

Other Designations OTTHUMP00000022011|OTTHUMP00000162202|gelsolin

Pathway

- [Fc gamma R-mediated phagocytosis](#)

- [Regulation of actin cytoskeleton](#)

Disease

- [Tobacco Use Disorder](#)