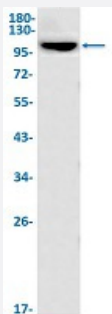


RecomAb™

HLTF recombinant monoclonal antibody, clone R03-1E4

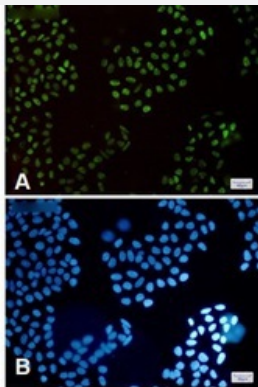
Catalog # RAB02216 Size 100 uL

Applications



Western Blot

Western Blot analysis of HeLa lysates with HLTF recombinant monoclonal antibody, clone R03-1E4 (Cat # RAB02216).



Immunocytochemistry

Immunocytochemical staining of HeLa with HLTF recombinant monoclonal antibody, clone R03-1E4 (Cat # RAB02216). (A) HLTF (green) and (B) DAPI (blue).

Specification

Product Description	Rabbit recombinant monoclonal antibody raised against human HLTF.
Antibody Species	Rabbit
Immunogen	Original antibody is raised against a synthetic peptide corresponding to human HLTF.
Theoretical MW (kDa)	Calculated MW: 114 k
Reactivity	Human

Form	Liquid
Purification	Affinity purification
Isotype	IgG
Recommend Usage	Immunofluorescence(1:50-1:200) Western Blot (1:500-1:1000) The optimal working dilution should be determined by the end user.
Storage Buffer	In 50 mM Tris-Glycine, pH 7.4 (0.15 M NaCl, 40% Glycerol, 0.01% Sodium azide and 0.05% BSA)
Storage Instruction	Store at -20 °C. Aliquot to avoid repeated freezing and thawing.
Note	This product contains sodium azide: a POISONOUS AND HAZARDOUS SUBSTANCE which should be handled by trained staff only.

Applications

- Western Blot

Western Blot analysis of Hela lysates with HLTF recombinant monoclonal antibody, clone R03-1E4 (Cat # RAB02216).

- Immunocytochemistry

Immunocytochemical staining of Hela with HLTF recombinant monoclonal antibody, clone R03-1E4 (Cat # RAB02216). (A) HLTF (green) and (B) DAPI (blue).

- Immunofluorescence

Gene Info — HLTF

Entrez GeneID	6596
Protein Accession#	Q14527
Gene Name	HLTF
Gene Alias	HIP116, HIP116A, HLTF1, RNF80, SMARCA3, SNF2L3, ZBU1
Gene Description	helicase-like transcription factor
Omim ID	603257
Gene Ontology	Hyperlink

Gene Summary

This gene encodes a member of the SWI/SNF family. Members of this family have helicase and ATPase activities and are thought to regulate transcription of certain genes by altering the chromatin structure around those genes. The encoded protein contains a RING finger DNA binding motif. Two transcript variants encoding the same protein have been found for this gene. However, use of an alternative translation start site produces an isoform that is truncated at the N-terminus compared to the full-length protein. [provided by RefSeq]

Other Designations

DNA-binding protein/plasminogen activator inhibitor-1 regulator|SNF2-like 3|SWI/SNF related, matrix associated, actin dependent regulator of chromatin, subfamily a, member 3|sucrose nonfermenting-like 3