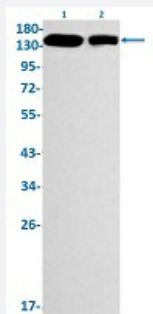


RecomAb™

ITGA5 recombinant monoclonal antibody, clone R02-3G4

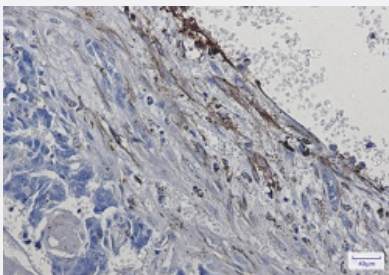
Catalog # RAB02170 Size 100 uL

Applications



Western Blot

Western Blot analysis of Lane 1: K562 and Lane 2: 3T3 lysates with ITGA5 recombinant monoclonal antibody, clone R02-3G4 (Cat # RAB02170).



Immunohistochemistry (Formalin/PFA-fixed paraffin-embedded sections)

Immunohistochemical staining (Formalin-fixed paraffin-embedded sections) of human breast cancer with ITGA5 recombinant monoclonal antibody, clone R02-3G4 (Cat # RAB02170). High-pressure and temperature Sodium Citrate pH 6.0 was used for antigen retrieval.

Specification

Product Description	Rabbit recombinant monoclonal antibody raised against human ITGA5.
Antibody Species	Rabbit
Immunogen	Original antibody is raised against a synthetic peptide corresponding to human ITGA5.
Theoretical MW (kDa)	Calculated MW: 115 k
Reactivity	Human, Mouse
Form	Liquid

Purification	Affinity purification
Isotype	IgG
Recommend Usage	Immunohistochemistry (1:50-1:100) Immunoprecipitation(1:20) Western Blot (1:500-1:1000) The optimal working dilution should be determined by the end user.
Storage Buffer	In 50 mM Tris-Glycine, pH 7.4 (0.15 M NaCl, 40% Glycerol, 0.01% Sodium azide and 0.05% BSA)
Storage Instruction	Store at -20 °C. Aliquot to avoid repeated freezing and thawing.
Note	This product contains sodium azide: a POISONOUS AND HAZARDOUS SUBSTANCE which should be handled by trained staff only.

Applications

- Western Blot

Western Blot analysis of Lane 1: K562 and Lane 2: 3T3 lysates with ITGA5 recombinant monoclonal antibody, clone R02-3G4 (Cat # RAB02170).

- Immunohistochemistry (Formalin/PFA-fixed paraffin-embedded sections)

Immunohistochemical staining (Formalin-fixed paraffin-embedded sections) of human breast cancer with ITGA5 recombinant monoclonal antibody, clone R02-3G4 (Cat # RAB02170). High-pressure and temperature Sodium Citrate pH 6.0 was used for antigen retrieval.

- Immunoprecipitation

Gene Info — ITGA5

Entrez GeneID	3678
Protein Accession#	P08648
Gene Name	ITGA5
Gene Alias	CD49e, FNRA, VLA5A
Gene Description	integrin, alpha 5 (fibronectin receptor, alpha polypeptide)
Omim ID	135620
Gene Ontology	Hyperlink

Gene Summary

The product of this gene belongs to the integrin alpha chain family. Integrins are heterodimeric integral membrane proteins composed of an alpha chain and a beta chain. This gene encodes the integrin alpha 5 chain. Alpha chain 5 undergoes post-translational cleavage in the extracellular domain to yield disulfide-linked light and heavy chains that join with beta 1 to form a fibronectin receptor. In addition to adhesion, integrins are known to participate in cell-surface mediated signalling. [provided by RefSeq]

Other Designations

fibronectin receptor, alpha subunit|integrin alpha 5|very late activation protein 5, alpha subunit

Pathway

- [Arrhythmogenic right ventricular cardiomyopathy \(ARVC\)](#)
- [ECM-receptor interaction](#)
- [Focal adhesion](#)
- [Hematopoietic cell lineage](#)
- [Hypertrophic cardiomyopathy \(HCM\)](#)
- [Regulation of actin cytoskeleton](#)

Disease

- [Tobacco Use Disorder](#)