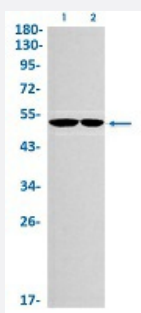


RecomAb™

ILK recombinant monoclonal antibody, clone R01-7F8

Catalog # RAB02166 Size 100 uL

Applications



Western Blot

Western Blot analysis of Lane 1: C6 and Lane 2: Hela lysates with ILK recombinant monoclonal antibody, clone R01-7F8 (Cat # RAB02166).

Specification

Product Description	Rabbit recombinant monoclonal antibody raised against human ILK.
Antibody Species	Rabbit
Immunogen	Original antibody is raised against a synthetic peptide corresponding to human ILK.
Theoretical MW (kDa)	Calculated MW: 51 kD
Reactivity	Human, Mouse, Rat
Form	Liquid
Purification	Affinity purification
Isotype	IgG
Recommend Usage	Immunoprecipitation(1:20) Western Blot (1:500-1:1000) The optimal working dilution should be determined by the end user.
Storage Buffer	In 50 mM Tris-Glycine, pH 7.4 (0.15 M NaCl, 40% Glycerol, 0.01% Sodium azide and 0.05% BSA)

Storage Instruction

Store at -20 °C.
Aliquot to avoid repeated freezing and thawing.

Note

This product contains sodium azide: a POISONOUS AND HAZARDOUS SUBSTANCE which should be handled by trained staff only.

Applications

- Western Blot

Western Blot analysis of Lane 1: C6 and Lane 2: Hela lysates with ILK recombinant monoclonal antibody, clone R01-7F8 (Cat # RAB02166).

- Immunoprecipitation

Gene Info — ILK

Entrez GeneID[3611](#)**Protein Accession#**[Q13418](#)**Gene Name**

ILK

Gene Alias

DKFZp686F1765, P59

Gene Description

integrin-linked kinase

Omim ID[602366](#)**Gene Ontology**[Hyperlink](#)**Gene Summary**

Transduction of extracellular matrix signals through integrins influences intracellular and extracellular functions, and appears to require interaction of integrin cytoplasmic domains with cellular proteins. Integrin-linked kinase (ILK), interacts with the cytoplasmic domain of beta-1 integrin. This gene encodes a serine/threonine protein kinase with 4 ankyrin-like repeats, which associates with the cytoplasmic domain of beta integrins and acts as a proximal receptor kinase regulating integrin-mediated signal transduction. Multiple alternatively spliced transcript variants encoding the same protein have been found for this gene. [provided by RefSeq]

Other Designations

-

Pathway

- [Endometrial cancer](#)

- [Focal adhesion](#)
- [PPAR signaling pathway](#)