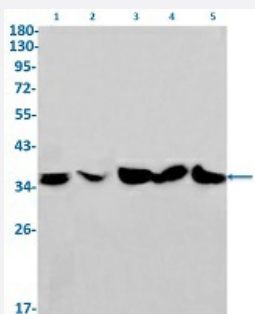


RecomAb™

LDHA recombinant monoclonal antibody, clone R06-6J2

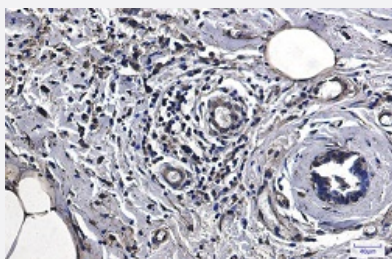
Catalog # RAB02146 Size 100 uL

Applications



Western Blot

Western Blot analysis of Lane 1: K562, Lane 2: rat brain, Lane 3: C6, Lane 4: 3T3 and Lane 5: HeLa lysates with LDHA recombinant monoclonal antibody, clone R06-6J2 (Cat # RAB02146).



Immunohistochemistry (Formalin/PFA-fixed paraffin-embedded sections)

Immunohistochemical staining (Formalin/PFA-fixed paraffin-embedded sections) of human breast cancer with LDHA recombinant monoclonal antibody, clone R06-6J2 (Cat # RAB02146). High-pressure and temperature Sodium Citrate pH 6.0 was used for antigen retrieval.

Specification

Product Description	Rabbit recombinant monoclonal antibody raised against human LDHA.
Antibody Species	Rabbit
Immunogen	Original antibody is raised against a synthetic peptide corresponding to human LDHA.
Theoretical MW (kDa)	Calculated MW: 37 kD
Reactivity	Human, Mouse, Rat
Form	Liquid

Purification	Affinity purification
Isotype	IgG
Recommend Usage	Immunofluorescence(1:50-1:200) Immunohistochemistry (1:50-1:100) Immunoprecipitation(1:20) Western Blot (1:500-1:1000) The optimal working dilution should be determined by the end user.
Storage Buffer	In 50 mM Tris-Glycine, pH 7.4 (0.15 M NaCl, 40% Glycerol, 0.01% Sodium azide and 0.05% BSA)
Storage Instruction	Store at -20 °C. Aliquot to avoid repeated freezing and thawing.
Note	This product contains sodium azide: a POISONOUS AND HAZARDOUS SUBSTANCE which should be handled by trained staff only.

Applications

- Western Blot

Western Blot analysis of Lane 1: K562, Lane 2: rat brain, Lane 3: C6, Lane 4: 3T3 and Lane 5: Hela lysates with LDHA recombinant monoclonal antibody, clone R06-6J2 (Cat # RAB02146).

- Immunohistochemistry (Formalin/PFA-fixed paraffin-embedded sections)

Immunohistochemical staining (Formalin/PFA-fixed paraffin-embedded sections) of human breast cancer with LDHA recombinant monoclonal antibody, clone R06-6J2 (Cat # RAB02146). High-pressure and temperature Sodium Citrate pH 6.0 was used for antigen retrieval.

- Immunofluorescence

- Immunoprecipitation

Gene Info — LDHA

Entrez GeneID	3939
Protein Accession#	P00338
Gene Name	LDHA
Gene Alias	LDH-M, LDH1, PIG19
Gene Description	lactate dehydrogenase A

Omim ID [150000](#)

Gene Ontology [Hyperlink](#)

Gene Summary The protein encoded by this gene catalyzes the conversion of L-lactate and NAD to pyruvate and NADH in the final step of anaerobic glycolysis. The protein is found predominantly in muscle tissue and belongs to the lactate dehydrogenase family. Mutations in this gene have been linked to exertional myoglobinuria. Multiple transcript variants encoding different isoforms have been found for this gene. The human genome contains several non-transcribed pseudogenes of this gene. [provided by RefSeq]

Other Designations L-lactate dehydrogenase A|proliferation-inducing gene 19

Pathway

- [Cysteine and methionine metabolism](#)
- [Glycolysis / Gluconeogenesis](#)
- [Metabolic pathways](#)
- [Propanoate metabolism](#)
- [Pyruvate metabolism](#)

Disease

- [Coronary Disease](#)
- [Genetic Predisposition to Disease](#)
- [Hypertension](#)
- [Narcolepsy](#)
- [Panic Disorder](#)