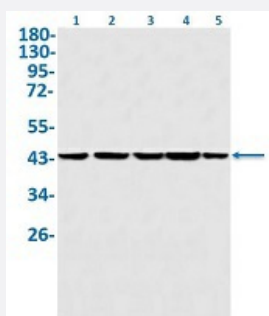


RecomAb™

NCK1 recombinant monoclonal antibody, clone R09-7F6

Catalog # RAB02076 Size 100 uL

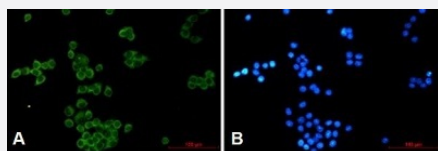
Applications



Western Blot

Western Blot analysis of Lane 1: K562, Lane 2: rat brain, Lane 3: C6, Lane 4: 3T3 and Lane 5: Hela lysates with NCK1 recombinant monoclonal antibody, clone R09-7F6 (Cat # RAB02076).

Immunocytochemistry



Immunocytochemical staining of Hela with NCK1 recombinant monoclonal antibody, clone R09-7F6 (Cat # RAB02076). (A) NCK1 (green) and (B) DAPI (blue).

Specification

Product Description	Rabbit recombinant monoclonal antibody raised against human NCK1.
Antibody Species	Rabbit
Immunogen	Original antibody is raised against a synthetic peptide corresponding to human NCK1.
Theoretical MW (kDa)	Calculated MW: 43 kD
Reactivity	Human, Mouse, Rat
Form	Liquid

Purification	Affinity purification
Isotype	IgG
Recommend Usage	Immunocytochemistry Immunofluorescence(1:50-1:200) Immunohistochemistry (1:50-1:100) Immunoprecipitation(1:20) Western Blot (1:500-1:1000) The optimal working dilution should be determined by the end user.
Storage Buffer	In 50 mM Tris-Glycine, pH 7.4 (0.15 M NaCl, 40% Glycerol, 0.01% Sodium azide and 0.05% BSA)
Storage Instruction	Store at -20 °C. Aliquot to avoid repeated freezing and thawing.
Note	This product contains sodium azide: a POISONOUS AND HAZARDOUS SUBSTANCE which should be handled by trained staff only.

Applications

- Western Blot

Western Blot analysis of Lane 1: K562, Lane 2: rat brain, Lane 3: C6, Lane 4: 3T3 and Lane 5: Hela lysates with NCK1 recombinant monoclonal antibody, clone R09-7F6 (Cat # RAB02076).

- Immunohistochemistry

- Immunocytochemistry

Immunocytochemical staining of Hela with NCK1 recombinant monoclonal antibody, clone R09-7F6 (Cat # RAB02076). (A) NCK1 (green) and (B) DAPI (blue).

- Immunofluorescence

- Immunoprecipitation

Gene Info — NCK1

Entrez GeneID	4690
Protein Accession#	P16333
Gene Name	NCK1
Gene Alias	MGC12668, NCK, NCKalpha

Gene Description	NCK adaptor protein 1
Omim ID	600508
Gene Ontology	Hyperlink
Gene Summary	The protein encoded by this gene is one of the signaling and transforming proteins containing Src homology 2 and 3 (SH2 and SH3) domains. It is located in the cytoplasm and is an adaptor protein involved in transducing signals from receptor tyrosine kinases to downstream signal recipients such as RAS. [provided by RefSeq]
Other Designations	NCK tyrosine kinase SH2/SH3 adaptor protein NCK-alpha melanoma NCK protein non-catalytic region of tyrosine kinase

Pathway

- [Axon guidance](#)
- [ErbB signaling pathway](#)
- [Pathogenic Escherichia coli infection - EHEC](#)
- [T cell receptor signaling pathway](#)