

RecomAb™

SDHA recombinant monoclonal antibody, clone R09-5K6

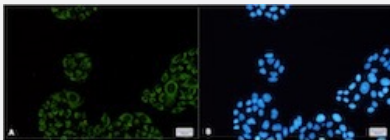
Catalog # RAB01923 Size 100 uL

Applications



Western Blot

Western blot analysis of Lane 1: K562, Lane 2: C6 and Lane 3: 3T3 lysates with SDHA recombinant monoclonal antibody, clone R09-5K6 (Cat # RAB01923).



Immunocytochemistry

Immunocytochemical staining of HeLa with SDHA recombinant monoclonal antibody, clone R09-5K6 (Cat # RAB01923). (A) SDHA (green) and (B) DAPI (blue).

Specification

Product Description	Rabbit recombinant monoclonal antibody raised against human SDHA.
Antibody Species	Rabbit
Immunogen	Original antibody is raised against a synthetic peptide corresponding to human SDHA.
Theoretical MW (kDa)	Calculated MW: 73 kD
Reactivity	Human, Mouse, Rat
Form	Liquid

Purification	Affinity purification
Isotype	IgG
Recommend Usage	Immunocytochemistry Immunofluorescence (1:50-1:200) Immunohistochemistry (1:50-1:100) Immunoprecipitation (1:20) Western Blot (1:500-1:1000) The optimal working dilution should be determined by the end user.
Storage Buffer	In 50 mM Tris-Glycine, pH 7.4 (0.15 M NaCl, 40% Glycerol, 0.01% Sodium azide and 0.05% BSA)
Storage Instruction	Store at -20 °C. Aliquot to avoid repeated freezing and thawing.
Note	This product contains sodium azide: a POISONOUS AND HAZARDOUS SUBSTANCE which should be handled by trained staff only.

Applications

- Western Blot

Western blot analysis of Lane 1: K562, Lane 2: C6 and Lane 3: 3T3 lysates with SDHA recombinant monoclonal antibody, clone R09-5K6 (Cat # RAB01923).

- Immunohistochemistry

- Immunocytochemistry

Immunocytochemical staining of Hela with SDHA recombinant monoclonal antibody, clone R09-5K6 (Cat # RAB01923). (A) SDHA (green) and (B) DAPI (blue).

- Immunofluorescence

- Immunoprecipitation

Gene Info — SDHA

Entrez GeneID	6389
Protein Accession#	P31040
Gene Name	SDHA
Gene Alias	FP, SDH2, SDHF

Gene Description	succinate dehydrogenase complex, subunit A, flavoprotein (Fp)
Omim ID	252011 256000 600857
Gene Ontology	Hyperlink
Gene Summary	This gene encodes a major catalytic subunit of succinate-ubiquinone oxidoreductase, a complex of the mitochondrial respiratory chain. The complex is composed of four nuclear-encoded subunit s and is localized in the mitochondrial inner membrane. Mutations in this gene have been associated with a form of mitochondrial respiratory chain deficiency known as Leigh Syndrome. A pseudo gene has been identified on chromosome 3q29. [provided by RefSeq]
Other Designations	succinate dehydrogenase complex flavoprotein subunit succinate dehydrogenase complex, subunit A, flavoprotein

Pathway

- [Biosynthesis of alkaloids derived from histidine and purine](#)
- [Biosynthesis of alkaloids derived from ornithine](#)
- [Biosynthesis of alkaloids derived from shikimate pathway](#)
- [Biosynthesis of alkaloids derived from terpenoid and polyketide](#)
- [Biosynthesis of phenylpropanoids](#)
- [Biosynthesis of plant hormones](#)
- [Biosynthesis of terpenoids and steroids](#)
- [Citrate cycle \(TCA cycle\)](#)
- [Metabolic pathways](#)
- [Oxidative phosphorylation](#)

Disease

- [Genetic Predisposition to Disease](#)
- [Infertility](#)
- [Prostatic Neoplasms](#)