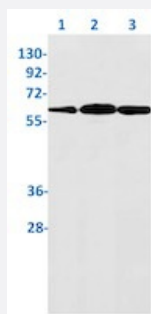


RecomAb™

YY1 recombinant monoclonal antibody, clone R01-1D3

Catalog # RAB01816 Size 100 uL

Applications



Western Blot

Western blot analysis of Lane1: C6, Lane2: 3T3 and Lane3: Hela lysates with YY1 recombinant monoclonal antibody, clone R01-1D3 (Cat # RAB01816).

Specification

Product Description	Rabbit recombinant monoclonal antibody raised against human YY1.
Antibody Species	Rabbit
Immunogen	Original antibody is raised against a synthetic peptide corresponding to human YY1.
Theoretical MW (kDa)	Calculated MW: 45 kD
Reactivity	Human, Mouse, Rat
Form	Liquid
Purification	Affinity purification
Isotype	IgG
Recommend Usage	Immunoprecipitation (1:20) Western Blot (1:500-1:1000) The optimal working dilution should be determined by the end user.
Storage Buffer	In 50 mM Tris-Glycine, pH 7.4 (0.15 M NaCl, 40% Glycerol, 0.01% Sodium azide and 0.05% BSA)

Storage Instruction

Store at -20 °C.
Aliquot to avoid repeated freezing and thawing.

Note

This product contains sodium azide: a POISONOUS AND HAZARDOUS SUBSTANCE which should be handled by trained staff only.

Applications

- Western Blot

Western blot analysis of Lane1: C6, Lane2: 3T3 and Lane3: Hela lysates with YY1 recombinant monoclonal antibody, clone R01-1D3 (Cat # RAB01816).

- Immunoprecipitation

Gene Info — YY1

Entrez GeneID[7528](#)**Protein Accession#**[P25490](#)**Gene Name**

YY1

Gene Alias

DELTA, INO80S, NF-E1, UCRBP, YIN-YANG-1

Gene Description

YY1 transcription factor

Omim ID[600013](#)**Gene Ontology**[Hyperlink](#)**Gene Summary**

YY1 is a ubiquitously distributed transcription factor belonging to the GLI-Kruppel class of zinc finger proteins. The protein is involved in repressing and activating a diverse number of promoters. YY1 may direct histone deacetylases and histone acetyltransferases to a promoter in order to activate or repress the promoter, thus implicating histone modification in the function of YY1. [provided by RefSeq]

Other Designations

INO80 complex subunit S|Yin and Yang 1 protein

Disease

- [Cardiovascular Diseases](#)

- [Diabetes Mellitus](#)

- [Edema](#)