

RecomAb™

# KRT17 recombinant monoclonal antibody, clone R07-1G7

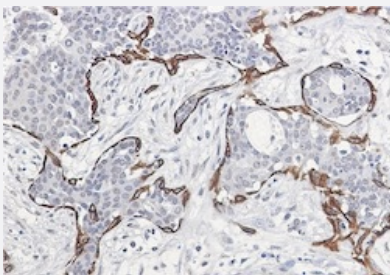
Catalog # RAB01801      Size 100 uL

## Applications



### Western Blot

Western blot analysis of Hela lysates with KRT17 recombinant monoclonal antibody, clone R07-1G7 (Cat # RAB01801).



### Immunohistochemistry (Formalin/PFA-fixed paraffin-embedded sections)

Immunohistochemical staining (Formalin/PFA-fixed paraffin-embedded sections) of Human breast cancer with KRT17 recombinant monoclonal antibody, clone R07-1G7 (Cat # RAB01801). High-pressure and temperature Sodium Citrate pH 6.0 was used for antigen retrieval.

## Specification

<b>Product Description</b>	Rabbit recombinant monoclonal antibody raised against human KRT17.
<b>Antibody Species</b>	Rabbit
<b>Immunogen</b>	Original antibody is raised against a synthetic peptide corresponding to human KRT17.
<b>Theoretical MW (kDa)</b>	Calculated MW: 48 kD
<b>Reactivity</b>	Human
<b>Form</b>	Liquid

<b>Purification</b>	Affinity purification
<b>Isotype</b>	IgG
<b>Recommend Usage</b>	Immunohistochemistry (1:50-1/100) Immunoprecipitation (1:20) Western Blot (1:500-1:1000) The optimal working dilution should be determined by the end user.
<b>Storage Buffer</b>	In 50 mM Tris-Glycine, pH 7.4 (0.15 M NaCl, 40% Glycerol, 0.01% Sodium azide and 0.05% BSA)
<b>Storage Instruction</b>	Store at -20 °C. Aliquot to avoid repeated freezing and thawing.
<b>Note</b>	This product contains sodium azide: a POISONOUS AND HAZARDOUS SUBSTANCE which should be handled by trained staff only.

## Applications

- Western Blot

Western blot analysis of Hela lysates with KRT17 recombinant monoclonal antibody, clone R07-1G7 (Cat # RAB01801).

- Immunohistochemistry (Formalin/PFA-fixed paraffin-embedded sections)

Immunohistochemical staining (Formalin/PFA-fixed paraffin-embedded sections) of Human breast cancer with KRT17 recombinant monoclonal antibody, clone R07-1G7 (Cat # RAB01801). High-pressure and temperature Sodium Citrate pH 6.0 was used for antigen retrieval.

- Immunoprecipitation

## Gene Info — KRT17

<b>Entrez GeneID</b>	<a href="#">3872</a>
<b>Protein Accession#</b>	<a href="#">Q04695</a>
<b>Gene Name</b>	KRT17
<b>Gene Alias</b>	K17, PC, PC2, PCHC1
<b>Gene Description</b>	keratin 17
<b>Omim ID</b>	<a href="#">148069</a> <a href="#">167210</a> <a href="#">184500</a>
<b>Gene Ontology</b>	<a href="#">Hyperlink</a>

**Gene Summary**

This gene encodes the type I intermediate filament chain keratin 17, expressed in nail bed, hair follicle, sebaceous glands, and other epidermal appendages. Mutations in this gene lead to Jackson-Lawler type pachyonychia congenita and steatocystoma multiplex. [provided by RefSeq]

**Other Designations**

cytokeratin-17