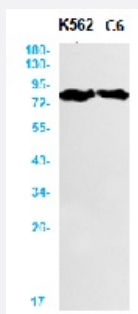


RecomAb™

# PRKCA recombinant monoclonal antibody, clone R09-7C7

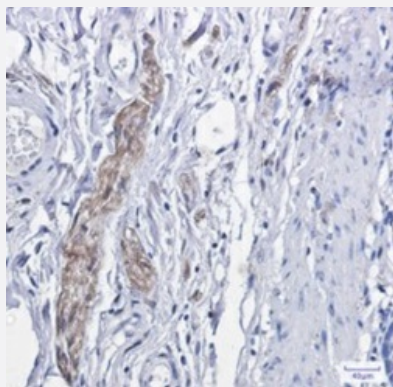
Catalog # RAB01670      Size 100 uL

## Applications



### Western Blot

Western blot analysis of Phospho-PKC alpha (Thr638) in K562, C6 lysates using human Phospho-PKC alpha (Thr638) recombinant monoclonal antibody, clone R09-7C7 (Cat # RAB01670).



### Immunohistochemistry (Formalin/PFA-fixed paraffin-embedded sections)

Immunohistochemical staining (Formalin-fixed paraffin-embedded sections) of human colon cancer with Phospho-PKC alpha (Thr638) recombinant monoclonal antibody, clone R09-7C7 (Cat # RAB01670). High-pressure and temperature Sodium Citrate pH 6.0 was used for antigen retrieval.

## Specification

<b>Product Description</b>	Rabbit recombinant monoclonal antibody raised against synthetic phosphopeptide corresponding to residues surrounding Thr638 of human PKC alpha.
<b>Antibody Species</b>	Rabbit
<b>Immunogen</b>	Original antibody is raised against a synthetic phosphopeptide corresponding to residues surrounding Thr638 of human PKC alpha
<b>Theoretical MW (kDa)</b>	Calculated MW: 77 kD

Reactivity	Human
Form	Liquid
Purification	Affinity purification
Isotype	IgG
Recommend Usage	Immunohistochemistry (1:50-1:100) Immunoprecipitation (1:20) Western Blot (1:500-1:1,000) The optimal working dilution should be determined by the end user.
Storage Buffer	In 50 mM Tris-Glycine, pH 7.4 (0.15 M NaCl, 40% Glycerol, 0.01% Sodium azide and 0.05% BSA)
Storage Instruction	Store at 4°C for short term. For long term storage store at -20°C. Aliquot to avoid repeated freezing and thawing.
Note	This product contains sodium azide: a POISONOUS AND HAZARDOUS SUBSTANCE which should be handled by trained staff only.

## Applications

- Western Blot

Western blot analysis of Phospho-PKC alpha (Thr638) in K562, C6 lysates using human Phospho-PKC alpha (Thr638) recombinant monoclonal antibody, clone R09-7C7 (Cat # RAB01670).

- Immunohistochemistry (Formalin/PFA-fixed paraffin-embedded sections)

Immunohistochemical staining (Formalin-fixed paraffin-embedded sections) of human colon cancer with Phospho-PKC alpha (Thr638) recombinant monoclonal antibody, clone R09-7C7 (Cat # RAB01670). High-pressure and temperature Sodium Citrate pH 6.0 was used for antigen retrieval.

- Immunoprecipitation

## Gene Info — PRKCA

Entrez GeneID	<a href="#">5578</a>
Protein Accession#	<a href="#">P17252</a>
Gene Name	PRKCA
Gene Alias	AAG6, MGC129900, MGC129901, PKC-alpha, PKCA, PRKACA
Gene Description	protein kinase C, alpha

Omim ID [176960](#)

Gene Ontology [Hyperlink](#)

### Gene Summary

Protein kinase C (PKC) is a family of serine- and threonine-specific protein kinases that can be activated by calcium and the second messenger diacylglycerol. PKC family members phosphorylate a wide variety of protein targets and are known to be involved in diverse cellular signaling pathways. PKC family members also serve as major receptors for phorbol esters, a class of tumor promoters. Each member of the PKC family has a specific expression profile and is believed to play a distinct role in cells. The protein encoded by this gene is one of the PKC family members. This kinase has been reported to play roles in many different cellular processes, such as cell adhesion, cell transformation, cell cycle checkpoint, and cell volume control. Knockout studies in mice suggest that this kinase may be a fundamental regulator of cardiac contractility and Ca(2+) handling in myocytes. [provided by RefSeq]

Other Designations aging-associated gene 6|protein kinase C alpha type

## Pathway

- [Calcium signaling pathway](#)
- [ErbB signaling pathway](#)
- [Fc epsilon RI signaling pathway](#)
- [Fc gamma R-mediated phagocytosis](#)
- [Focal adhesion](#)
- [Gap junction](#)
- [Glioma](#)
- [GnRH signaling pathway](#)
- [Leukocyte transendothelial migration](#)
- [Long-term depression](#)
- [Long-term potentiation](#)
- [MAPK signaling pathway](#)
- [Melanogenesis](#)
- [Natural killer cell mediated cytotoxicity](#)
- [Non-small cell lung cancer](#)

- [Pathogenic Escherichia coli infection - EHEC](#)
- [Pathways in cancer](#)
- [Phosphatidylinositol signaling system](#)
- [Tight junction](#)
- [Vascular smooth muscle contraction](#)
- [VEGF signaling pathway](#)
- [Vibrio cholerae infection](#)
- [Wnt signaling pathway](#)

## Disease

- [Adenocarcinoma](#)
- [Asthma](#)
- [Breast cancer](#)
- [Breast Neoplasms](#)
- [Esophageal Neoplasms](#)
- [Genetic Predisposition to Disease](#)
- [Liver Cirrhosis](#)
- [Mental Disorders](#)
- [Multiple Sclerosis](#)
- [Obesity](#)
- [Pancreatic Neoplasms](#)
- [Premature Birth](#)
- [Schizophrenia](#)
- [Tobacco Use Disorder](#)
- [Vaginitis](#)