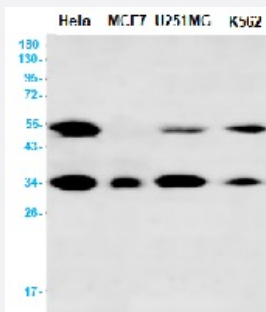


RecomAb™

BAG1 recombinant monoclonal antibody, clone R07-8C1

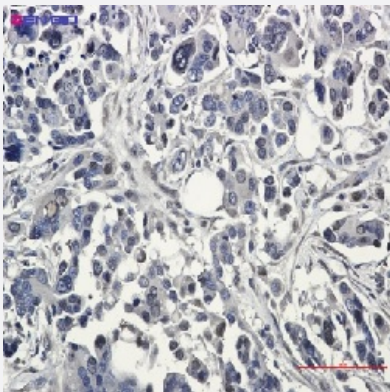
Catalog # RAB01570 Size 100 uL

Applications



Western Blot

Western blot analysis of Bag1 in HeLa, MCF-7, U251MG, K562 lysates using human Bag1 recombinant monoclonal antibody, clone R07-8C1 (Cat # RAB01570).



Immunohistochemistry (Formalin/PFA-fixed paraffin-embedded sections)

Immunohistochemistry (Formalin-fixed paraffin-embedded sections) of Human Cholangiocarcinoma with Bag1 recombinant monoclonal antibody, clone R07-8C1 (Cat # RAB01570).

Specification

Product Description	Rabbit recombinant monoclonal antibody raised against synthetic peptide of human Bag1.
Antibody Species	Rabbit
Immunogen	Original antibody is raised against a synthetic peptide corresponding to human Bag1
Theoretical MW (kDa)	Calculated MW: 39 kD
Reactivity	Human

Form	Liquid
Purification	Affinity purification
Isotype	IgG
Recommend Usage	Immunohistochemistry (1:50-1/100) Immunoprecipitation (1:20) Western Blot (1:500-1:1000) The optimal working dilution should be determined by the end user.
Storage Buffer	In 50 mM Tris-Glycine, pH 7.4 (0.15 M NaCl, 40% Glycerol, 0.01% Sodium azide and 0.05% BSA)
Storage Instruction	Store at 4°C for short term. For long term storage store at -20°C. Aliquot to avoid repeated freezing and thawing.
Note	This product contains sodium azide: a POISONOUS AND HAZARDOUS SUBSTANCE which should be handled by trained staff only.

Applications

- Western Blot

Western blot analysis of Bag1 in Hela, MCF-7, U251MG, K562 lysates using human Bag1 recombinant monoclonal antibody, clone R07-8C1 (Cat # RAB01570).

- Immunohistochemistry (Formalin/PFA-fixed paraffin-embedded sections)

Immunohistochemistry (Formalin-fixed paraffin-embedded sections) of Human Cholangiocarcinoma with Bag1 recombinant monoclonal antibody, clone R07-8C1 (Cat # RAB01570).

- Immunoprecipitation

Gene Info — BAG1

Entrez GeneID	573
Protein Accession#	Q99933
Gene Name	BAG1
Gene Alias	RAP46
Gene Description	BCL2-associated athanogene
Omim ID	601497

Gene Ontology

[Hyperlink](#)

Gene Summary

The oncogene BCL2 is a membrane protein that blocks a step in a pathway leading to apoptosis or programmed cell death. The protein encoded by this gene binds to BCL2 and is referred to as BCL2-associated athanogene. It enhances the anti-apoptotic effects of BCL2 and represents a link between growth factor receptors and anti-apoptotic mechanisms. At least three protein isoforms are encoded by this mRNA through the use of a non-AUG (CUG) start site, and alternative, downstream, AUG translation initiation sites. [provided by RefSeq]

Other Designations

BCL2-associated athanogene 1

Disease

- [Cardiovascular Diseases](#)
- [Diabetes Mellitus](#)
- [Edema](#)
- [Head and Neck Neoplasms](#)
- [Narcolepsy](#)
- [Neoplasm Recurrence](#)
- [Neoplasms](#)