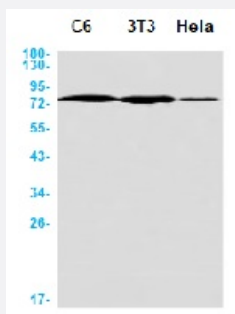


RecomAb™

CALD1 recombinant monoclonal antibody, clone R05-3D2

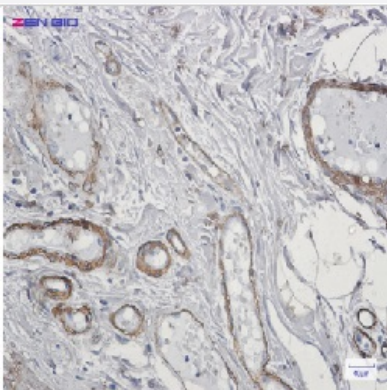
Catalog # RAB01546 Size 100 uL

Applications



Western Blot

Western blot analysis of CALD1 in C6, 3T3, HeLa lysates using human Caldesmon recombinant monoclonal antibody, clone R05-3D2 (Cat # RAB01546).



Immunohistochemistry (Formalin/PFA-fixed paraffin-embedded sections)

Immunohistochemistry (Formalin-fixed paraffin-embedded sections) of Human colon cancer with Caldesmon recombinant monoclonal antibody, clone R05-3D2 (Cat # RAB01546).

Specification

Product Description	Rabbit recombinant monoclonal antibody raised against synthetic peptide of human Caldesmon.
Antibody Species	Rabbit
Immunogen	Original antibody is raised against a synthetic peptide corresponding to human Caldesmon
Theoretical MW (kDa)	Calculated MW: 93 kD
Reactivity	Human

Form	Liquid
Purification	Affinity purification
Isotype	IgG
Recommend Usage	Immunohistochemistry (1:50-1/100) Immunoprecipitation (1:20) Western Blot (1:500-1:1000) The optimal working dilution should be determined by the end user.
Storage Buffer	In 50 mM Tris-Glycine, pH 7.4 (0.15 M NaCl, 40% Glycerol, 0.01% Sodium azide and 0.05% BSA)
Storage Instruction	Store at 4°C for short term. For long term storage store at -20°C. Aliquot to avoid repeated freezing and thawing.
Note	This product contains sodium azide: a POISONOUS AND HAZARDOUS SUBSTANCE which should be handled by trained staff only.

Applications

- Western Blot

Western blot analysis of CALD1 in C6, 3T3, Hela lysates using human Caldesmon recombinant monoclonal antibody, clone R05-3D2 (Cat # RAB01546).

- Immunohistochemistry (Formalin/PFA-fixed paraffin-embedded sections)

Immunohistochemistry (Formalin-fixed paraffin-embedded sections) of Human colon cancer with Caldesmon recombinant monoclonal antibody, clone R05-3D2 (Cat # RAB01546).

- Immunoprecipitation

Gene Info — CALD1

Entrez GeneID	800
Protein Accession#	Q05682
Gene Name	CALD1
Gene Alias	CDM, H-CAD, L-CAD, MGC21352, NAG22
Gene Description	caldesmon 1
Omim ID	114213

Gene Ontology

[Hyperlink](#)

Gene Summary

This gene encodes a calmodulin- and actin-binding protein that plays an essential role in the regulation of smooth muscle and nonmuscle contraction. The conserved domain of this protein possesses the binding activities to Ca(2+)-calmodulin, actin, tropomyosin, myosin, and phospholipids. This protein is a potent inhibitor of the actin-tropomyosin activated myosin MgATPase, and serves as a mediating factor for Ca(2+)-dependent inhibition of smooth muscle contraction. Alternative splicing of this gene results in multiple transcript variants encoding distinct isoforms. [provided by RefSeq]

Other Designations

-

Pathway

- [Vascular smooth muscle contraction](#)

Disease

- [Diabetes Mellitus](#)
- [Diabetic Nephropathies](#)
- [Genetic Predisposition to Disease](#)
- [Tobacco Use Disorder](#)