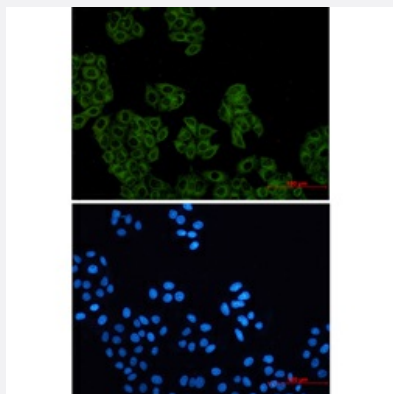


RecomAb™

ACTR2 recombinant monoclonal antibody, clone R04-3H3

Catalog # RAB01490 Size 100 uL

Applications



Immunocytochemistry

Immunocytochemistry analysis of Actin Related Protein 2 (green) in HeLa using Actin Related Protein 2 antibody, and DAPI (blue).

Specification

| | |
|----------------------|---|
| Product Description | Rabbit recombinant monoclonal antibody raised against human ACTR2. |
| Antibody Species | Rabbit |
| Immunogen | Original antibody is raised against recombinant protein corresponding to human ACTR2. |
| Theoretical MW (kDa) | Calculated MW: 45 kD |
| Reactivity | Human |
| Form | Liquid |
| Purification | Affinity purification |
| Isotype | IgG |
| Recommend Usage | Immunocytochemistry Immunofluorescence Western Blot The optimal working dilution should be determined by the end user. |

| | |
|---------------------|--|
| Storage Buffer | In 50mM Tris-Glycine, pH 7.4, (0.15M NaCl, 40% Glycerol, 0.01% Sodium azide and 0.05% BSA) |
| Storage Instruction | Store at 4°C. For longer storage, aliquot and store at -20°C. Aliquot to avoid repeated freezing and thawing. |
| Note | This product contains sodium azide: a POISONOUS AND HAZARDOUS SUBSTANCE which should be handled by trained staff only. |

Applications

- Western Blot
- Immunocytochemistry
Immunocytochemistry analysis of Actin Related Protein 2 (green) in Hela using Actin Related Protein 2 antibody, and DAPI (blue).
- Immunofluorescence

Gene Info — ACTR2

| | |
|--------------------|--|
| Entrez GeneID | 10097 |
| Protein Accession# | P61160 |
| Gene Name | ACTR2 |
| Gene Alias | ARP2 |
| Gene Description | ARP2 actin-related protein 2 homolog (yeast) |
| Omim ID | 604221 |
| Gene Ontology | Hyperlink |
| Gene Summary | The specific function of this gene has not yet been determined; however, the protein it encodes is known to be a major constituent of the ARP2/3 complex. This complex is located at the cell surface and is essential to cell shape and motility through lamellipodial actin assembly and protrusion. Two transcript variants encoding different isoforms have been found for this gene. [provided by RefSeq] |
| Other Designations | actin-related protein 2 |