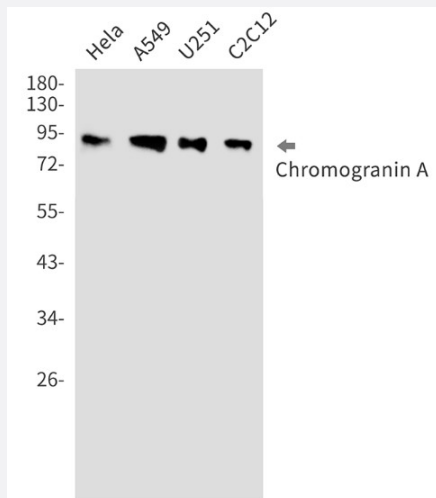


RecomAb™

CHGA recombinant monoclonal antibody, clone R08-0F6

Catalog # RAB01471 Size 100 uL

Applications



Western Blot

Western Blot analysis of HeLa, A549, U251, C2C12 lysates with CHGA recombinant monoclonal antibody, clone R08-0F6 (Cat # RAB01471).

Specification

Product Description	Rabbit recombinant monoclonal antibody raised against human CHGA.
Antibody Species	Rabbit
Immunogen	Original antibody is raised against recombinant protein corresponding to human CHGA.
Theoretical MW (kDa)	Calculated MW: 51 kD
Reactivity	Human
Form	Liquid
Purification	Affinity purification
Isotype	IgG

Recommend Usage	Western Blot The optimal working dilution should be determined by the end user.
Storage Buffer	In 50mM Tris-Glycine, pH 7.4, (0.15M NaCl, 40% Glycerol, 0.01% Sodium azide and 0.05% BSA)
Storage Instruction	Store at 4°C. For longer storage, aliquot and store at -20°C. Aliquot to avoid repeated freezing and thawing.
Note	This product contains sodium azide: a POISONOUS AND HAZARDOUS SUBSTANCE which should be handled by trained staff only.

Applications

- Western Blot

Western Blot analysis of Hela, A549, U251, C2C12 lysates with CHGA recombinant monoclonal antibody, clone R08-0F6 (Cat # RAB01471).

Gene Info — CHGA

Entrez GeneID	1113
Protein Accession#	P10645
Gene Name	CHGA
Gene Alias	CGA
Gene Description	chromogranin A (parathyroid secretory protein 1)
Omim ID	118910
Gene Ontology	Hyperlink

Gene Summary	The protein encoded by this gene is a member of the chromogranin/secretogranin family of neuroendocrine secretory proteins. It is found in secretory vesicles of neurons and endocrine cells. This gene product is a precursor to three biologically active peptides; vasostatin, pancreastatin, and parastatin. These peptides act as autocrine or paracrine negative modulators of the neuroendocrine system. Other peptides, including chromostatin, beta-granin, WE-14 and GE-25, are also derived from the full-length protein. However, biological activities for these molecules have not been shown. [provided by RefSeq]
Other Designations	betagranin (N-terminal fragment of chromogranin A) chromogranin A parathyroid secretory protein 1

Disease

- [Genetic Predisposition to Disease](#)
- [Glomerulonephritis](#)
- [Hypertension](#)
- [Kidney Failure](#)
- [Prostatic Neoplasms](#)
- [Schizophrenia](#)