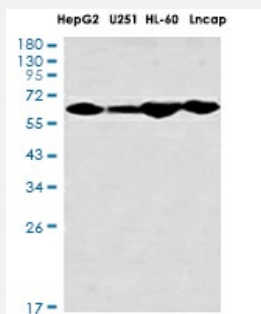


RecomAb™

GBP1 recombinant monoclonal antibody, clone R02-7B6

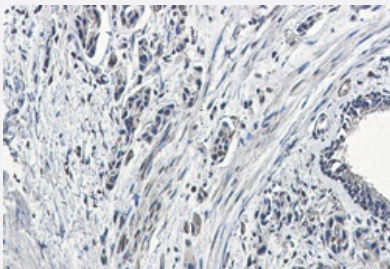
Catalog # RAB01445 Size 100 uL

Applications



Western Blot

Western blot analysis of GBP1 in HepG2, U251, HL-60, Lncap lysates using GBP1 antibody.



Immunohistochemistry (Formalin/PFA-fixed paraffin-embedded sections)

Immunohistochemistry analysis of paraffin-embedded Human lung cancer tissue using GBP1 antibody. High-pressure and temperature Sodium Citrate pH 6.0 was used for antigen retrieval.

Specification

Product Description	Rabbit recombinant monoclonal antibody raised against human GBP1.
Antibody Species	Rabbit
Immunogen	Original antibody is raised against recombinant protein corresponding to human GBP1.
Theoretical MW (kDa)	Calculated MW: 68 kD
Reactivity	Human
Form	Liquid

Purification	Affinity purification
Isotype	IgG
Recommend Usage	Immunocytochemistry Immunofluorescence Immunohistochemistry (Frozen sections) Immunohistochemistry (Formalin/PFA-fixed paraffin-embedded sections) Western Blot The optimal working dilution should be determined by the end user.
Storage Buffer	In 50mM Tris-Glycine, pH 7.4, (0.15M NaCl, 40% Glycerol, 0.01% Sodium azide and 0.05% BSA)
Storage Instruction	Store at 4°C. For longer storage, aliquot and store at -20°C. Aliquot to avoid repeated freezing and thawing.
Note	This product contains sodium azide: a POISONOUS AND HAZARDOUS SUBSTANCE which should be handled by trained staff only.

Applications

- Western Blot

Western blot analysis of GBP1 in HepG2, U251, HL-60, Lncap lysates using GBP1 antibody.

- Immunohistochemistry (Formalin/PFA-fixed paraffin-embedded sections)

Immunohistochemistry analysis of paraffin-embedded Human lung cancer tissue using GBP1 antibody. High-pressure and temperature Sodium Citrate pH 6.0 was used for antigen retrieval.

- Immunohistochemistry (Frozen sections)

- Immunocytochemistry

- Immunofluorescence

Gene Info — GBP1

Entrez GeneID	2633
Protein Accession#	P32455
Gene Name	GBP1
Gene Alias	-

Gene Description	guanylate binding protein 1, interferon-inducible, 67kDa
Omim ID	600411
Gene Ontology	Hyperlink
Gene Summary	Guanylate binding protein expression is induced by interferon. Guanylate binding proteins are characterized by their ability to specifically bind guanine nucleotides (GMP, GDP, and GTP) and are distinguished from the GTP-binding proteins by the presence of 2 binding motifs rather than 3. [provided by RefSeq]
Other Designations	OTTHUMP00000012352

Disease

- [Multiple Sclerosis](#)