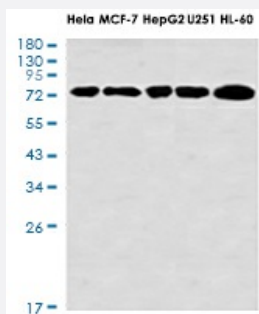


RecomAb™

MTDH recombinant monoclonal antibody, clone R05-5G3

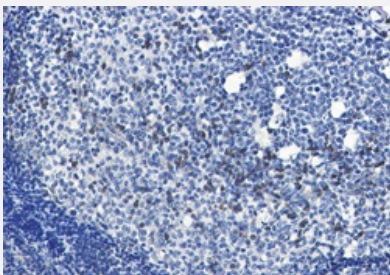
Catalog # RAB01416 Size 100 uL

Applications



Western Blot

Western blot analysis of LYRIC/AEG1 in HeLa, MCF-7, HepG2, U251, HL-60 lysates using LYRIC/AEG1 antibody.



Immunohistochemistry (Formalin/PFA-fixed paraffin-embedded sections)

Immunohistochemistry analysis of paraffin-embedded Human tonsil using LYRIC/AEG1 antibody. High-pressure and temperature Sodium Citrate pH 6.0 was used for antigen retrieval.

Specification

Product Description	Rabbit recombinant monoclonal antibody raised against human MTDH.
Antibody Species	Rabbit
Immunogen	Original antibody is raised against recombinant protein corresponding to human MTDH.
Theoretical MW (kDa)	Calculated MW: 64 kD
Reactivity	Human
Form	Liquid

Purification	Affinity purification
Isotype	IgG
Recommend Usage	Immunocytochemistry Immunofluorescence Immunohistochemistry (Frozen sections) Immunohistochemistry (Formalin/PFA-fixed paraffin-embedded sections) Immunoprecipitation Western Blot The optimal working dilution should be determined by the end user.
Storage Buffer	In 50mM Tris-Glycine, pH 7.4, (0.15M NaCl, 40% Glycerol, 0.01% Sodium azide and 0.05% BSA)
Storage Instruction	Store at 4°C. For longer storage, aliquot and store at -20°C. Aliquot to avoid repeated freezing and thawing.
Note	This product contains sodium azide: a POISONOUS AND HAZARDOUS SUBSTANCE which should be handled by trained staff only.

Applications

- Western Blot

Western blot analysis of LYRIC/AEG1 in Hela, MCF-7, HepG2, U251, HL-60 lysates using LYRIC/AEG1 antibody.

- Immunohistochemistry (Formalin/PFA-fixed paraffin-embedded sections)

Immunohistochemistry analysis of paraffin-embedded Human tonsil using LYRIC/AEG1 antibody. High-pressure and temperature Sodium Citrate pH 6.0 was used for antigen retrieval.

- Immunohistochemistry (Frozen sections)

- Immunocytochemistry

- Immunofluorescence

- Immunoprecipitation

Gene Info — MTDH

Entrez GeneID [92140](#)

Protein Accession# [Q86UE4](#)

Gene Name	MTDH
Gene Alias	3D3, AEG-1, AEG1, LYRIC
Gene Description	metadherin
Omim ID	610323
Gene Ontology	Hyperlink
Other Designations	LYRIC/3D3 astrocyte elevated gene-1 metastasis adhesion protein

Disease

- [Genetic Predisposition to Disease](#)
- [Migraine Disorders](#)