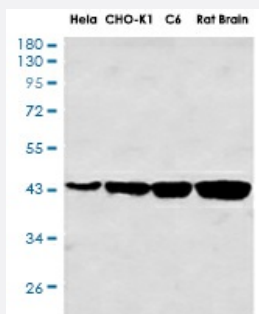


RecomAb™

# ACTA1 recombinant monoclonal antibody, clone R05-4F6

Catalog # RAB01407      Size 100 uL

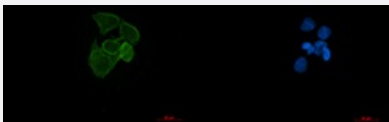
## Applications



### Western Blot

Western blot analysis of muscle Actin in HeLa, CHO-K1, C6, rat Brain lysates using muscle Actin antibody.

### Immunocytochemistry



Immunocytochemistry analysis of alpha Skeletal Muscle Actin (green) in HeLa using alpha Skeletal Muscle Actin antibody, and DAPI (blue).

## Specification

<b>Product Description</b>	Rabbit recombinant monoclonal antibody raised against human ACTA1.
<b>Antibody Species</b>	Rabbit
<b>Immunogen</b>	Original antibody is raised against recombinant protein corresponding to human ACTA1.
<b>Theoretical MW (kDa)</b>	Calculated MW: 42 kD
<b>Reactivity</b>	Human
<b>Form</b>	Liquid

Purification	Affinity purification
Isotype	IgG
Recommend Usage	Immunocytochemistry Immunofluorescence Immunohistochemistry (Frozen sections) Immunohistochemistry (Formalin/PFA-fixed paraffin-embedded sections) Immunoprecipitation Western Blot The optimal working dilution should be determined by the end user.
Storage Buffer	In 50mM Tris-Glycine, pH 7.4, (0.15M NaCl, 40% Glycerol, 0.01% Sodium azide and 0.05% BSA)
Storage Instruction	Store at 4°C. For longer storage, aliquot and store at -20°C. Aliquot to avoid repeated freezing and thawing.
Note	This product contains sodium azide: a POISONOUS AND HAZARDOUS SUBSTANCE which should be handled by trained staff only.

## Applications

- Western Blot

Western blot analysis of muscle Actin in Hela, CHO-K1, C6, rat Brain lysates using muscle Actin antibody.

- Immunohistochemistry (Formalin/PFA-fixed paraffin-embedded sections)

- Immunohistochemistry (Frozen sections)

- Immunocytochemistry

Immunocytochemistry analysis of alpha Skeletal Muscle Actin (green) in Hela using alpha Skeletal Muscle Actin antibody, and DAPI(blue).

- Immunofluorescence

- Immunoprecipitation

## Gene Info — ACTA1

Entrez GeneID [58](#)

Protein Accession# [P68133](#)

Gene Name	ACTA1
Gene Alias	ACTA, ASMA, CFTD, CFTD1, CFTDM, MPFD, NEM1, NEM2, NEM3
Gene Description	actin, alpha 1, skeletal muscle
Omim ID	<a href="#">102610</a> <a href="#">161800</a> <a href="#">255310</a>
Gene Ontology	<a href="#">Hyperlink</a>
Gene Summary	<p>The product encoded by this gene belongs to the actin family of proteins, which are highly conserved proteins that play a role in cell motility, structure and integrity. Alpha, beta and gamma actin isoforms have been identified, with alpha actins being a major constituent of the contractile apparatus, while beta and gamma actins are involved in the regulation of cell motility. This actin is an alpha actin that is found in skeletal muscle. Mutations in this gene cause nemaline myopathy type 3, congenital myopathy with excess of thin myofilaments, congenital myopathy with cores, and congenital myopathy with fiber-type disproportion, diseases that lead to muscle fiber defects. [provided by RefSeq]</p>
Other Designations	OTTHUMP00000036123 alpha skeletal muscle actin

## Disease

- [Acute Disease](#)
- [Alzheimer disease](#)
- [Atherosclerosis](#)
- [Calcinosis](#)
- [Coronary Artery Disease](#)
- [Diabetes Mellitus](#)
- [Myocardial Infarction](#)
- [Parkinson disease](#)