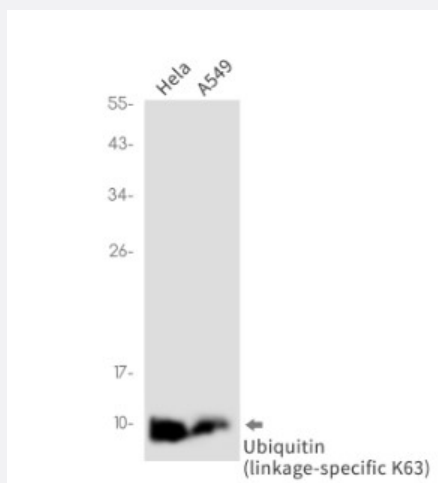


RecomAb™

## UBB recombinant monoclonal antibody, clone R06-2H7

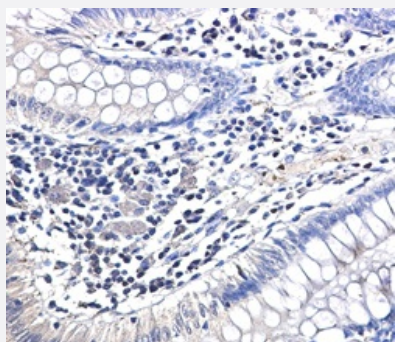
Catalog # RAB01335      Size 100 uL

### Applications



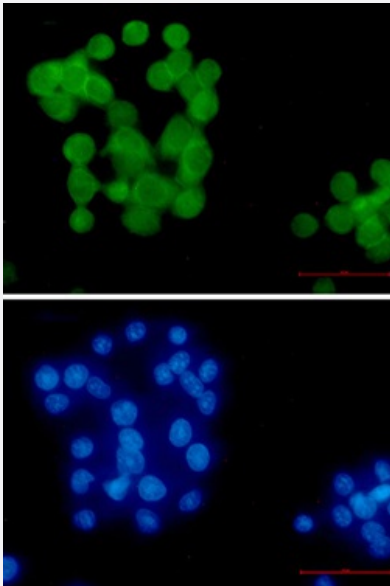
#### Western Blot

Western Blot analysis of HeLa, A549 lysates with UBB recombinant monoclonal antibody, clone R06-2H7 (Cat # RAB01335).



#### Immunohistochemistry (Formalin/PFA-fixed paraffin-embedded sections)

Immunohistochemistry analysis of paraffin-embedded Human colon cancer using Ubiquitin (linkagespecific K63) antibody. High-pressure and temperature Sodium Citrate pH 6.0 was used for antigen retrieval.



## Immunocytochemistry

Immunocytochemistry analysis of Ubiquitin (linkagespecific K63) (green) in hela using Ubiquitin (linkagespecific K63) antibody, and DAPI(blue)

## Specification

<b>Product Description</b>	Rabbit recombinant monoclonal antibody raised against human UBB.
<b>Antibody Species</b>	Rabbit
<b>Immunogen</b>	Original antibody is raised against recombinant protein corresponding to human UBB.
<b>Theoretical MW (kDa)</b>	Calculated MW: 26 kD
<b>Reactivity</b>	Human
<b>Form</b>	Liquid
<b>Purification</b>	Affinity purification
<b>Isotype</b>	IgG
<b>Recommend Usage</b>	Immunocytochemistry Immunofluorescence Immunohistochemistry (Frozen sections) Immunohistochemistry (Formalin/PFA-fixed paraffin-embedded sections) Western Blot The optimal working dilution should be determined by the end user.
<b>Storage Buffer</b>	In 50mM Tris-Glycine, pH 7.4, (0.15M NaCl, 40% Glycerol, 0.01% Sodium azide and 0.05% BSA)
<b>Storage Instruction</b>	Store at 4°C. For longer storage, aliquot and store at -20°C. Aliquot to avoid repeated freezing and thawing.

**Note**

This product contains sodium azide: a POISONOUS AND HAZARDOUS SUBSTANCE which should be handled by trained staff only.

## Applications

- Western Blot

Western Blot analysis of Hela, A549 lysates with UBB recombinant monoclonal antibody, clone R06-2H7 (Cat # RAB01335).

- Immunohistochemistry (Formalin/PFA-fixed paraffin-embedded sections)

Immunohistochemistry analysis of paraffin-embedded Human colon cancer using Ubiquitin (linkagespecific K63) antibody. High-pressure and temperature Sodium Citrate pH 6.0 was used for antigen retrieval.

- Immunohistochemistry (Frozen sections)

- Immunocytochemistry

Immunocytochemistry analysis of Ubiquitin (linkagespecific K63) (green) in Hela using Ubiquitin (linkagespecific K63) antibody, and DAPI (blue)

- Immunofluorescence

## Gene Info — UBB

Entrez GeneID	<a href="#">7314</a>
---------------	----------------------

Protein Accession#	<a href="#">P0CG47</a>
--------------------	------------------------

Gene Name	UBB
-----------	-----

Gene Alias	FLJ25987, MGC8385
------------	-------------------

Gene Description	ubiquitin B
------------------	-------------

Omim ID	<a href="#">191339</a>
---------	------------------------

Gene Ontology	<a href="#">Hyperlink</a>
---------------	---------------------------

**Gene Summary**

This gene encodes ubiquitin, one of the most conserved proteins known. Ubiquitin is required for ATP-dependent, nonlysosomal intracellular protein degradation of abnormal proteins and normal proteins with a rapid turnover. Ubiquitin is covalently bound to proteins to be degraded, and presumably labels these proteins for degradation. Ubiquitin also binds to histone H2A in actively transcribed regions but does not cause histone H2A degradation, suggesting that ubiquitin is also involved in regulation of gene expression. This gene consists of three direct repeats of the ubiquitin coding sequence with no spacer sequence. Consequently, the protein is expressed as a polyubiquitin precursor with a final amino acid after the last repeat. Aberrant form of this protein has been noticed in patients with Alzheimer's and Down syndrome. [provided by RefSeq]

**Other Designations**

OTTHUMP00000064960|OTTHUMP00000064961|polyubiquitin B