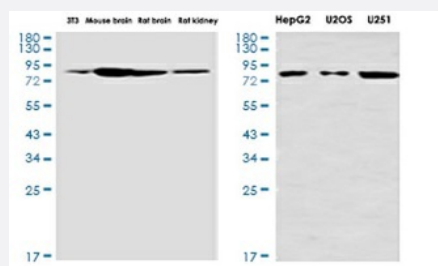


RecomAb™

# VPS35 recombinant monoclonal antibody, clone R03-6E1

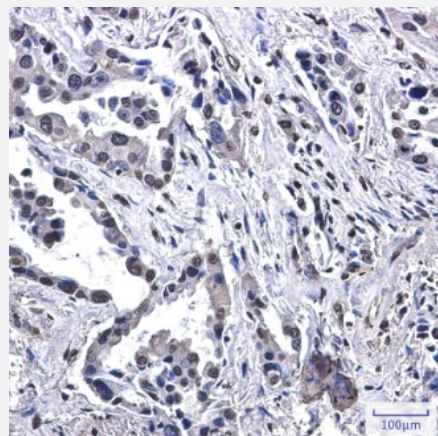
Catalog # RAB01331      Size 100 uL

## Applications



### Western Blot

Western blot analysis of VPS35 in 3T3, mouse brain, rat brain, rat kidney, HepG2, U2OS, U251 lysates using VPS35 antibody.



### Immunohistochemistry (Formalin/PFA-fixed paraffin-embedded sections)

Immunohistochemical staining (Formalin-fixed paraffin-embedded sections) of human lung cancer with VPS35 recombinant monoclonal antibody, clone R03-6E1 (Cat # RAB01331).

## Specification

<b>Product Description</b>	Rabbit recombinant monoclonal antibody raised against human VPS35.
<b>Antibody Species</b>	Rabbit
<b>Immunogen</b>	Original antibody is raised against recombinant protein corresponding to human VPS35.
<b>Theoretical MW (kDa)</b>	Calculated MW: 92 kD
<b>Reactivity</b>	Human

Form	Liquid
Purification	Affinity purification
Isotype	IgG
Recommend Usage	Immunohistochemistry (Formalin/PFA-fixed paraffin-embedded sections) Western Blot The optimal working dilution should be determined by the end user.
Storage Buffer	In 50mM Tris-Glycine, pH 7.4, (0.15M NaCl, 40% Glycerol, 0.01% Sodium azide and 0.05% BSA)
Storage Instruction	Store at 4°C. For longer storage, aliquot and store at -20°C. Aliquot to avoid repeated freezing and thawing.
Note	This product contains sodium azide: a POISONOUS AND HAZARDOUS SUBSTANCE which should be handled by trained staff only.

## Applications

- Western Blot

Western blot analysis of VPS35 in 3T3, mouse brain, rat brain, rat kidney, HepG2, U2OS, U251 lysates using VPS35 antibody.

- Immunohistochemistry (Formalin/PFA-fixed paraffin-embedded sections)

Immunohistochemical staining (Formalin-fixed paraffin-embedded sections) of human lung cancer with VPS35 recombinant monoclonal antibody, clone R03-6E1 (Cat # RAB01331).

## Gene Info — VPS35

Entrez GeneID	<a href="#">55737</a>
Protein Accession#	<a href="#">Q96QK1</a>
Gene Name	VPS35
Gene Alias	DKFZp434E1211, DKFZp434P1672, FLJ10752, FLJ13588, FLJ20388, MEM3
Gene Description	vacuolar protein sorting 35 homolog (S. cerevisiae)
Omim ID	<a href="#">606931</a>
Gene Ontology	<a href="#">Hyperlink</a>

**Gene Summary**

This gene belongs to a group of vacuolar protein sorting (VPS) genes. The encoded protein is a component of a large multimeric complex, termed the retromer complex, involved in retrograde transport of proteins from endosomes to the trans-Golgi network. The close structural similarity between the yeast and human proteins that make up this complex suggests a similarity in function. Expression studies in yeast and mammalian cells indicate that this protein interacts directly with VPS35, which serves as the core of the retromer complex. [provided by RefSeq]

**Other Designations**

maternal-embryonic 3|vacuolar protein sorting 35