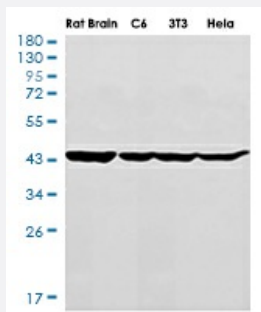


RecomAb™

ACTA2 recombinant monoclonal antibody, clone R01-8C7

Catalog # RAB01299 Size 100 uL

Applications



Western Blot

Western blot analysis of alpha smooth muscle Actin in rat Brain, C6, 3T3, HeLa lysates using alpha Smooth Muscle Actin antibody.

Specification

Product Description	Rabbit recombinant monoclonal antibody raised against human ACTA2.
Antibody Species	Rabbit
Immunogen	Original antibody is raised against recombinant protein corresponding to human alpha smooth muscle Actin.
Theoretical MW (kDa)	Calculated MW: 42 kD
Reactivity	Human
Form	Liquid
Purification	Affinity purification
Isotype	IgG
Recommend Usage	Immunohistochemistry (Formalin/PFA-fixed paraffin-embedded sections) Western Blot The optimal working dilution should be determined by the end user.
Storage Buffer	In 50 mM Tris-Glycine, pH 7.4 (0.15 M NaCl, 40% Glycerol, 0.01% Sodium azide and 0.05% BSA)

Storage Instruction

Store at 4°C. For longer storage, aliquot and store at -20°C.
Aliquot to avoid repeated freezing and thawing.

Note

This product contains sodium azide: a POISONOUS AND HAZARDOUS SUBSTANCE which should be handled by trained staff only.

Applications

- Western Blot

Western blot analysis of alpha smooth muscle Actin in rat Brain, C6, 3T3, Hela lysates using alpha Smooth Muscle Actin antibody.

- Immunohistochemistry (Formalin/PFA-fixed paraffin-embedded sections)

Gene Info — ACTA2

Entrez GeneID[59](#)**Protein Accession#**[P62736](#)**Gene Name**

ACTA2

Gene Alias

AAT6, ACTSA

Gene Description

actin, alpha 2, smooth muscle, aorta

Omim ID[102620](#)**Gene Ontology**[Hyperlink](#)**Gene Summary**

The protein encoded by this gene belongs to the actin family of proteins, which are highly conserved proteins that play a role in cell motility, structure and integrity. Alpha, beta and gamma actin isoforms have been identified, with alpha actins being a major constituent of the contractile apparatus, while beta and gamma actins are involved in the regulation of cell motility. This actin is an alpha actin that is found in skeletal muscle. Defects in this gene cause aortic aneurysm familial thoracic type 6. Multiple alternatively spliced variants, encoding the same protein, have been identified. [provided by RefSeq]

Other Designations

OTTHUMP00000020042|alpha 2 actin|alpha-cardiac actin|growth-inhibiting gene 46

Pathway

- [Vascular smooth muscle contraction](#)

Disease

- [Alzheimer Disease](#)
- [Cardiovascular Diseases](#)
- [Diabetes Mellitus](#)
- [Edema](#)
- [Genetic Predisposition to Disease](#)