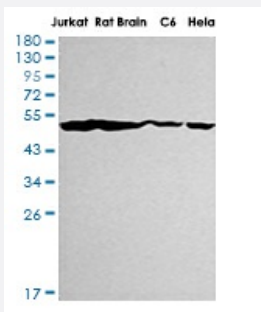


RecomAb™

ENO1 recombinant monoclonal antibody, clone R01-4C8

Catalog # RAB01271 Size 100 uL

Applications



Western Blot

Western blot analysis of ENO1 in Jurkat, rat Brain, C6, Hela lysates using ENO1 antibody.

Specification

Product Description	Rabbit recombinant monoclonal antibody raised against human ENO1.
Antibody Species	Rabbit
Immunogen	Original antibody is raised against recombinant protein corresponding to human ENO1.
Theoretical MW (kDa)	Calculated MW: 47 kD
Reactivity	Human
Form	Liquid
Purification	Affinity purification
Isotype	IgG

Recommend Usage

Immunohistochemistry (Frozen sections)
Immunohistochemistry (Formalin/PFA-fixed paraffin-embedded sections)
Immunocytochemistry
Immunofluorescence
Immunoprecipitation
Western Blot
The optimal working dilution should be determined by the end user.

Storage Buffer

In 50 mM Tris-Glycine pH 7.4 (0.15 M NaCl, 40% Glycerol, 0.01% Sodium azide and 0.05% BSA)

Storage Instruction

Store at 4°C. For longer storage, aliquot and store at -20°C.
Aliquot to avoid repeated freezing and thawing.

Note

This product contains sodium azide: a POISONOUS AND HAZARDOUS SUBSTANCE which should be handled by trained staff only.

Applications

- Western Blot

Western blot analysis of ENO1 in Jurkat, rat Brain, C6, Hela lysates using ENO1 antibody.

- Immunohistochemistry (Formalin/PFA-fixed paraffin-embedded sections)

- Immunohistochemistry (Frozen sections)

- Immunocytochemistry

- Immunofluorescence

- Immunoprecipitation

Gene Info — ENO1

Entrez GeneID

[2023](#)

Protein Accession#

[P06733](#)

Gene Name

ENO1

Gene Alias

ENO1L1, MBP-1, MPB1, NNE, PPH

Gene Description

enolase 1, (alpha)

Omim ID

[172430](#)

Gene Ontology

[Hyperlink](#)

Gene Summary

This gene encodes one of three enolase isoenzymes found in mammals; it encodes alpha-enolase, a homodimeric soluble enzyme, and also encodes a shorter monomeric structural lens protein, tau-crystallin. The two proteins are made from the same message. The full length protein, the isoenzyme, is found in the cytoplasm. The shorter protein is produced from an alternative translation start, is localized to the nucleus, and has been found to bind to an element in the c-myc promoter. A pseudogene has been identified that is located on the other arm of the same chromosome. [provided by RefSeq]

Other Designations

2-phospho-D-glycerate hydro-lyase|MYC promoter-binding protein 1|OTTHUMP00000001706|alpha enolase like 1|enolase 1|non-neural enolase|phosphopyruvate hydratase|tau-crystallin

Pathway

- [Biosynthesis of alkaloids derived from histidine and purine](#)
- [Biosynthesis of alkaloids derived from ornithine](#)
- [Biosynthesis of alkaloids derived from shikimate pathway](#)
- [Biosynthesis of alkaloids derived from terpenoid and polyketide](#)
- [Biosynthesis of phenylpropanoids](#)
- [Biosynthesis of plant hormones](#)
- [Biosynthesis of terpenoids and steroids](#)
- [Glycolysis / Gluconeogenesis](#)
- [Metabolic pathways](#)
- [RNA degradation](#)

Disease

- [Myocardial Infarction](#)