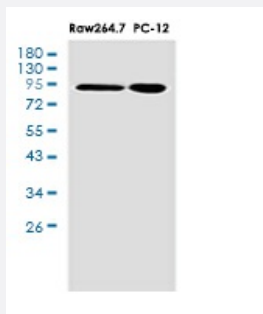


RecomAb™

STAT5B recombinant monoclonal antibody, clone R08-2I8

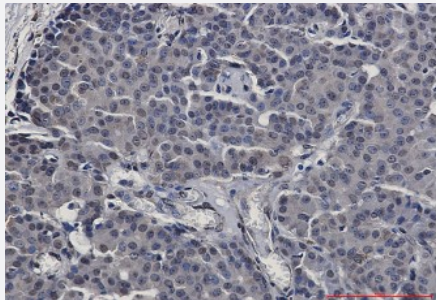
Catalog # RAB01208 Size 100 uL

Applications



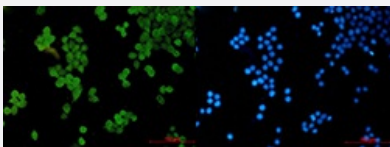
Western Blot

Western blot analysis of STAT5b in Raw264.7, PC-12 lysates using STAT5b antibody.



Immunohistochemistry (Formalin/PFA-fixed paraffin-embedded sections)

Immunohistochemical staining (Formalin-fixed paraffin-embedded sections) of human breast cancer with STAT5B recombinant monoclonal antibody, clone R08-2I8 (Cat # RAB01208).



Immunocytochemistry

Immunocytochemistry analysis of STAT5b (green) in Hela using STAT5b antibody, and DAPI (blue).

Specification

Product Description

Rabbit recombinant monoclonal antibody raised against human STAT5B.

Antibody Species	Rabbit
Immunogen	Original antibody is raised against recombinant protein corresponding to human STAT5b.
Theoretical MW (kDa)	Calculated MW: 90 kD
Reactivity	Human
Form	Liquid
Purification	Affinity purification
Isotype	IgG
Recommend Usage	Western Blot Immunohistochemistry (Frozen sections) Immunohistochemistry (Formalin/PFA-fixed paraffin-embedded sections) Immunocytochemistry Immunofluorescence Immunoprecipitation The optimal working dilution should be determined by the end user.
Storage Buffer	In 50mM Tris-Glycine pH 7.4 (0.15M NaCl, 40% Glycerol, 0.01% Sodium azide and 0.05% BSA)
Storage Instruction	Store at 4°C. For longer storage, aliquot and store at -20°C. Aliquot to avoid repeated freezing and thawing.
Note	This product contains sodium azide: a POISONOUS AND HAZARDOUS SUBSTANCE which should be handled by trained staff only.

Applications

- Western Blot

Western blot analysis of STAT5b in Raw264.7, PC-12 lysates using STAT5b antibody.

- Immunohistochemistry (Formalin/PFA-fixed paraffin-embedded sections)

Immunohistochemical staining (Formalin-fixed paraffin-embedded sections) of human breast cancer with STAT5B recombinant monoclonal antibody, clone R08-2I8 (Cat # RAB01208).

- Immunohistochemistry (Frozen sections)

- Immunocytochemistry

Immunocytochemistry analysis of STAT5b (green) in Hela using STAT5b antibody, and DAPI (blue).

- Immunofluorescence

- Immunoprecipitation

Gene Info — STAT5B

Entrez GeneID [6777](#)

Protein Accession# [P51692](#)

Gene Name STAT5B

Gene Alias STAT5

Gene Description signal transducer and activator of transcription 5B

Omim ID [245590 604260](#)

Gene Ontology [Hyperlink](#)

Gene Summary

The protein encoded by this gene is a member of the STAT family of transcription factors. In response to cytokines and growth factors, STAT family members are phosphorylated by the receptor associated kinases, and then form homo- or heterodimers that translocate to the cell nucleus where they act as transcription activators. This protein mediates the signal transduction triggered by various cell ligands, such as IL2, IL4, CSF1, and different growth hormones. It has been shown to be involved in diverse biological processes, such as TCR signaling, apoptosis, adult mammary gland development, and sexual dimorphism of liver gene expression. This gene was found to fuse to retinoic acid receptor-alpha (RARA) gene in a small subset of acute promyelocytic leukemias (APLL). The dysregulation of the signaling pathways mediated by this protein may be the cause of the APLL. [provided by RefSeq]

Other Designations transcription factor STAT5B

Pathway

- [Acute myeloid leukemia](#)
- [Chemokine signaling pathway](#)
- [Chronic myeloid leukemia](#)
- [ErbB signaling pathway](#)
- [Jak-STAT signaling pathway](#)
- [Pathways in cancer](#)

Disease

- [Birth Weight](#)
- [Breast cancer](#)
- [Breast Neoplasms](#)
- [Cardiovascular Diseases](#)
- [Cleft Lip](#)
- [Cleft Palate](#)
- [Diabetes Mellitus](#)
- [Edema](#)
- [Genetic Predisposition to Disease](#)
- [Glioblastoma](#)
- [Glioma](#)
- [Leukemia](#)
- [Meningeal Neoplasms](#)
- [Meningioma](#)
- [Tooth Abnormalities](#)