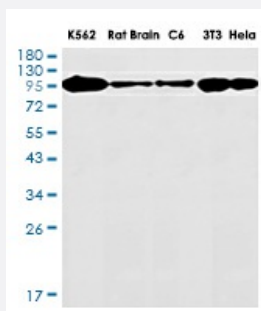


RecomAb™

TOP1 recombinant monoclonal antibody, clone R02-2H9

Catalog # RAB01204 Size 100 uL

Applications



Western Blot

Western blot analysis of Topoisomerase I in K562, rat Brain, C6, 3T3, HeLa lysates using Topoisomerase I antibody.

Specification

Product Description	Rabbit recombinant monoclonal antibody raised against human TOP1.
Antibody Species	Rabbit
Immunogen	Original antibody is raised against a synthetic peptide corresponding to human Topoisomerase I.
Theoretical MW (kDa)	Calculated MW: 91 kD
Reactivity	Human
Form	Liquid
Purification	Affinity purification
Isotype	IgG
Recommend Usage	<p>Western Blot</p> <p>Immunohistochemistry (Frozen sections)</p> <p>Immunohistochemistry (Formalin/PFA-fixed paraffin-embedded sections)</p> <p>Immunocytochemistry</p> <p>Immunofluorescence</p> <p>The optimal working dilution should be determined by the end user.</p>

Storage Buffer	In 50mM Tris-Glycine pH 7.4 (0.15M NaCl, 40% Glycerol, 0.01% Sodium azide and 0.05% BSA)
Storage Instruction	Store at 4°C. For longer storage, aliquot and store at -20°C. Aliquot to avoid repeated freezing and thawing.
Note	This product contains sodium azide: a POISONOUS AND HAZARDOUS SUBSTANCE which should be handled by trained staff only.

Applications

- Western Blot

Western blot analysis of Topoisomerase I in K562, rat Brain, C6, 3T3, Hela lysates using Topoisomerase I antibody.

- Immunohistochemistry (Formalin/PFA-fixed paraffin-embedded sections)

- Immunohistochemistry (Frozen sections)

- Immunocytochemistry

- Immunofluorescence

Gene Info — TOP1

Entrez GeneID	7150
Protein Accession#	P11387
Gene Name	TOP1
Gene Alias	TOPI
Gene Description	topoisomerase (DNA) I
Omim ID	126420
Gene Ontology	Hyperlink
Gene Summary	This gene encodes a DNA topoisomerase, an enzyme that controls and alters the topologic state of DNA during transcription. This enzyme catalyzes the transient breaking and rejoining of a single strand of DNA which allows the strands to pass through one another, thus altering the topology of DNA. This gene is localized to chromosome 20 and has pseudogenes which reside on chromosomes 1 and 22. [provided by RefSeq]
Other Designations	DNA topoisomerase I OTTHUMP00000031713 type I DNA topoisomerase

Disease

- [Neoplasms](#)
- [Neutropenia](#)