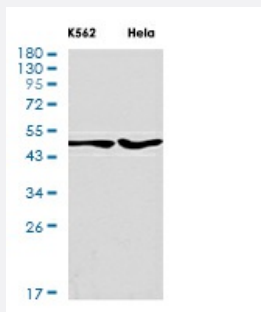


RecomAb™

# TRIM21 recombinant monoclonal antibody, clone R01-1E8

Catalog # RAB01201      Size 100 uL

## Applications



### Western Blot

Western blot analysis of TRIM21 in K562, HeLa lysates using TRIM21 antibody.

## Specification

|                             |  |
|-----------------------------|--|
| <b>Product Description</b>  | Rabbit recombinant monoclonal antibody raised against human TRIM21.                      |
| <b>Antibody Species</b>     | Rabbit   |
| <b>Immunogen</b>            | Original antibody is raised against recombinant protein corresponding to human TRIM21.   |
| <b>Theoretical MW (kDa)</b> | Calculated MW: 54 kD   |
| <b>Reactivity</b>           | Human  |
| <b>Form</b>                 | Liquid   |
| <b>Purification</b>         | Affinity purification  |
| <b>Isotype</b>              | IgG  |
| <b>Recommend Usage</b>      | Western Blot<br>The optimal working dilution should be determined by the end user.       |
| <b>Storage Buffer</b>       | In 50mM Tris-Glycine pH 7.4 (0.15M NaCl, 40% Glycerol, 0.01% Sodium azide and 0.05% BSA) |

## Storage Instruction

Store at 4°C. For longer storage, aliquot and store at -20°C.  
Aliquot to avoid repeated freezing and thawing.

## Note

This product contains sodium azide: a POISONOUS AND HAZARDOUS SUBSTANCE which should be handled by trained staff only.

## Applications

- Western Blot

Western blot analysis of TRIM21 in K562, Hela lysates using TRIM21 antibody.

## Gene Info — TRIM21

### Entrez GeneID

[6737](#)

### Protein Accession#

[P19474](#)

### Gene Name

TRIM21

### Gene Alias

RNF81, RO52, SSA, SSA1

### Gene Description

tripartite motif-containing 21

### Omim ID

[109092](#)

### Gene Ontology

[Hyperlink](#)

### Gene Summary

This gene encodes a member of the tripartite motif (TRIM) family. The TRIM motif includes three zinc-binding domains, a RING, a B-box type 1 and a B-box type 2, and a coiled-coil region. The encoded protein is part of the RoSSA ribonucleoprotein, which includes a single polypeptide and one of four small RNA molecules. The RoSSA particle localizes to both the cytoplasm and the nucleus. RoSSA interacts with autoantigens in patients with Sjogren syndrome and systemic lupus erythematosus. Alternatively spliced transcript variants for this gene have been described but the full-length nature of only one has been determined. [provided by RefSeq]

### Other Designations

Sicca syndrome antigen A|Sjogren syndrome antigen A1 (52kDa, ribonucleoprotein autoantigen SS-A/Ro)|tripartite motif protein 21

## Pathway

- [Systemic lupus erythematosus](#)

## Disease

- [Anemia](#)
- [Genetic Predisposition to Disease](#)
- [Lupus Erythematosus](#)
- [Ovarian Neoplasms](#)