

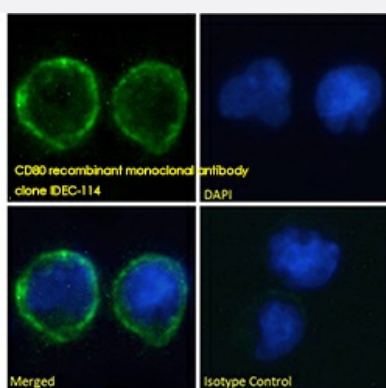
RecomAb™

HuAb

CD80 humanized monoclonal antibody, clone IDEC-114 (Galiximab)

Catalog # RAB01149 Size 200 ug

Applications



Immunofluorescence

Immunofluorescence analysis of paraformaldehyde fixed Daudi cells on coverslips, permeabilized with 0.15% Triton and stained with the chimeric rabbit IgG version of IDEC-114 (Galiximab) at 10 ug/mL for 1h followed by Alexa Fluor 488 secondary antibody (1 ug/mL), showing membrane staining. The nuclear stain is DAPI (blue). Panels show from left-right, top-bottom, DAPI, merged channels and an isotype control. The isotype control was stained with an anti-Fluorescein antibody followed by Alexa Fluor 488 secondary antibody.

Specification

Product Description	Humanized recombinant monoclonal antibody raised against human CD80.
Antibody Species	Human
Immunogen	Original antibody is raised against by immunizing cynomolgus monkeys with recombinant CD80 anti gen. The variable regions of the light and heavy chains were then cloned by being incorporated into a cassette vector (N5LG1) containing human constant region genes and subsequently transfected into the Dg44 CHO cell line (Hariharan K, 2013).
Reactivity	Human
Specificity	Galiximab is a primatized mAb which consists of human constant and primate (cynomolgus macaque) variable regions and binds specifically to CD80. CD80 is a surface glycoprotein and a member of the B7 family of costimulatory molecules. CD80 antigen regulates T cell activation (through interacting with CD28 or CD152) and is expressed transiently in antigen-presenting cells, T cells and normal B cells, and expressed constitutively on various subtypes of B-cell lymphomas.
Form	Liquid

Purification	Protein A affinity purification
Isotype	IgG1, Lambda
Recommend Usage	Immunofluorescence The optimal working dilution should be determined by the end user.
Storage Buffer	In PBS with 0.02% Proclin 300
Storage Instruction	Store at 4°C for up to 3 months. For longer storage, aliquot and store at -20°C.

Applications

- Immunofluorescence

Immunofluorescence analysis of paraformaldehyde fixed Daudi cells on coverslips, permeabilized with 0.15% Triton and stained with the chimeric rabbit IgG version of IDEC-114 (Galiximab) at 10 ug/mL for 1h followed by Alexa Fluor 488 secondary antibody (1 ug/mL), showing membrane staining. The nuclear stain is DAPI (blue). Panels show from left-right, top-bottom, DAPI, merged channels and an isotype control. The isotype control was stained with an anti-Fluorescein antibody followed by Alexa Fluor 488 secondary antibody.

Gene Info — CD80

Entrez GeneID	941
Protein Accession#	P33681
Gene Name	CD80
Gene Alias	CD28LG, CD28LG1, LAB7
Gene Description	CD80 molecule
Omim ID	112203
Gene Ontology	Hyperlink
Gene Summary	The B-lymphocyte activation antigen B7-1 (formerly referred to as B7) provides regulatory signals for T lymphocytes as a consequence of binding to the CD28 (MIM 186760) and CTLA4 (MIM 123 890) ligands of T cells.[supplied by OMIM]
Other Designations	B-lymphocyte activation antigen B7 CD80 antigen CD80 antigen (CD28 antigen ligand 1, B7-1 antigen) costimulatory factor CD80 costimulatory molecule variant IgV-CD80

Pathway

- [Allograft rejection](#)
- [Autoimmune thyroid disease](#)
- [Cell adhesion molecules \(CAMs\)](#)
- [Graft-versus-host disease](#)
- [Systemic lupus erythematosus](#)
- [Toll-like receptor signaling pathway](#)
- [Type I diabetes mellitus](#)

Disease

- [Arthritis](#)
- [Asthma](#)
- [Bronchiolitis](#)
- [Carcinoma](#)
- [Celiac Disease](#)
- [Disease Progression](#)
- [Genetic Predisposition to Disease](#)
- [Hepatitis C](#)
- [Infant](#)
- [Liver Neoplasms](#)
- [Lung Neoplasms](#)
- [Lupus Erythematosus](#)
- [Multiple Sclerosis](#)
- [Papillomavirus Infections](#)
- [Pulmonary Disease](#)
- [Respiratory Syncytial Virus Infections](#)
- [Sarcoidosis](#)

- [Urinary Bladder Neoplasms](#)
- [Uterine Cervical Neoplasms](#)
- [Viremia](#)
- [Werner syndrome](#)