

RecomAb™

CD4 recombinant monoclonal antibody, clone CE9.1 (Clenoliximab)

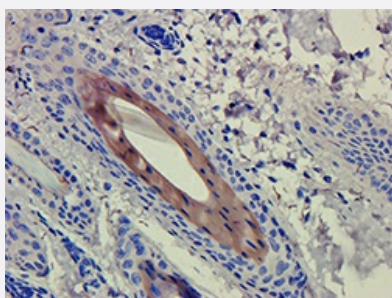
Catalog # RAB01143 Size 200 ug

Applications



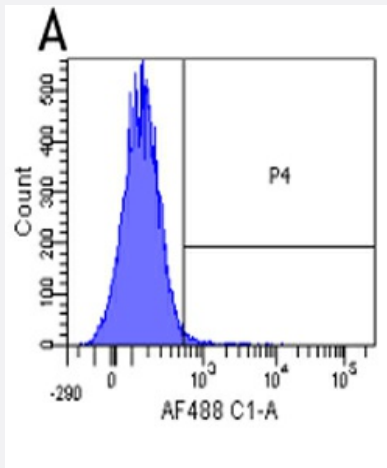
Western Blot

Western Blot analysis of Human thyroid tumour samples were resolved on a 15% SDS PAGE gel and blots probed with the human IgG4-chimeric version of CE9.1 at 1.5 ug/mL before detection using an anti-human IgG4 secondary antibody. Protein was detected by chemiluminescence. The expected unmodified running size for CD4 is 51kDa (arrowhead). Here some non-specific bands can also be seen.



Immunohistochemistry

Immunohistochemistry analysis of Anti-CD4 staining of formaldehyde fixed paraffin embedded guinea pig skin tissue, at 40x magnification. The human IgG4-chimeric version of CE9.1 (Clenoliximab) was used to stain samples at a concentration of 3 ug/mL.



Flow Cytometry

Flow-cytometry were stained with an isotype control at a concentration of 1 ug/mL for 30 mins at RT. After washing, bound antibody was detected using a AF488 conjugated donkey anti-rabbit antibody and cells analysed on a FACSCanto flow-cytometer.

Specification

Product Description	Mouse recombinant monoclonal antibody raised against human CD4.
Antibody Species	Mouse
Immunogen	Original antibody is raised against Domain 1 of human CD4.
Reactivity	Human
Specificity	The antibody binds to human CD4 with a Kd of 1.0 nM and an ED50 of 0.2 ug/mL.
Form	Liquid
Purification	Protein A affinity purification
Isotype	IgG1, Lambda
Recommend Usage	Flow cytometry Immunohistochemistry Western Blot The optimal working dilution should be determined by the end user.
Storage Buffer	In PBS with 0.02% Proclin 300
Storage Instruction	Store at 4°C for up to 3 months. For longer storage, aliquot and store at -20°C.

Applications

- Western Blot

Western Blot analysis of Human thyroid tumour samples were resolved on a 15% SDS PAGE gel and blots probed with the human IgG4-chimeric version of CE9.1 at 1.5 ug/mL before detection using an anti-human IgG4 secondary antibody. Protein was detected by chemiluminescence. The expected unmodified running size for CD4 is 51kDa (arrowhead). Here some non-specific bands can also be seen.

- Immunohistochemistry

Immunohistochemistry analysis of Anti-CD4 staining of formaldehyde fixed paraffin embedded guinea pig skin tissue, at 40x magnification. The human IgG4-chimeric version of CE9.1 (Clenoliximab) was used to stain samples at a concentration of 3 ug/mL.

- Flow Cytometry

Flow-cytometry were stained with an isotype control at a concentration of 1 ug/mL for 30 mins at RT. After washing, bound antibody was detected using a AF488 conjugated donkey anti-rabbit antibody and cells analysed on a FACSCanto flow-cytometer.

Gene Info — CD4

Entrez GeneID [920](#)

Protein Accession# [P01730](#)

Gene Name CD4

Gene Alias CD4mut

Gene Description CD4 molecule

Omim ID [186940](#)

Gene Ontology [Hyperlink](#)

Other Designations CD4 antigen|CD4 antigen (p55)|CD4 receptor

Pathway

- [Antigen processing and presentation](#)
- [Cell adhesion molecules \(CAMs\)](#)
- [Hematopoietic cell lineage](#)
- [Primary immunodeficiency](#)

- [T cell receptor signaling pathway](#)

Disease

- [Acquired Immunodeficiency Syndrome](#)
- [Arthritis](#)
- [Asthma](#)
- [Breast cancer](#)
- [Breast Neoplasms](#)
- [Disease Progression](#)
- [Disease Susceptibility](#)
- [Genetic Predisposition to Disease](#)
- [Head and Neck Neoplasms](#)
- [Hematologic Diseases](#)
- [Hepatitis C](#)
- [HIV Infections](#)
- [Hodgkin Disease](#)
- [Lung Neoplasms](#)
- [Lupus Erythematosus](#)
- [Lymphoproliferative Disorders](#)
- [Multiple Myeloma](#)
- [Multiple Sclerosis](#)
- [Neoplasm Recurrence](#)
- [Neoplasms](#)
- [Occupational Diseases](#)
- [Pregnancy Complications](#)
- [Pulmonary Disease](#)

- [Urinary Bladder Neoplasms](#)
- [Viremia](#)
- [Vitiligo](#)
- [Waldenstrom Macroglobulinemia](#)
- [Werner syndrome](#)