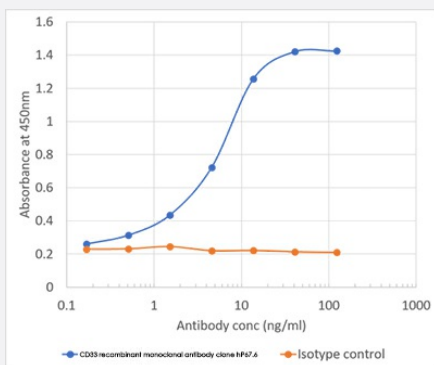


RecomAb™

# CD33 recombinant monoclonal antibody, clone hP67.6 (Gemtuzumab)

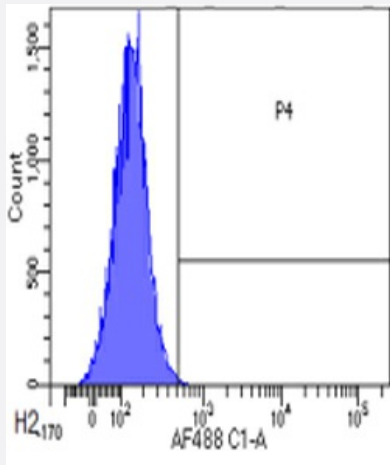
Catalog # RAB01140      Size 200 ug

## Applications



### Enzyme-linked Immunoabsorbent Assay

ELISA Plate coated with human His-tagged CD33 at a concentration of 2 ug/mL. A 3-fold serial dilution from 10,000 to 0.1 ng/mL was performed using. For detection, a 1:4000 dilution of HRP-labelled anti-human kappa light chain antibody was used.



### Flow Cytometry

Flow-cytometry were stained with an isotype control at a concentration of 1 ug/mL for 30 mins at RT. After washing, bound antibody was detected using a AF488 conjugated donkey anti-rabbit antibody and cells analysed on a FACSCanto flow-cytometer.

## Specification

**Product Description** Mouse recombinant monoclonal antibody raised against human CD33.

**Antibody Species** Mouse

<b>Immunogen</b>	Original antibody is raised against by humanization of the murine P67.6 clone, raised against CD33-transfected FMY9S5 cells of human origin. CD33 is a transmembrane receptor expressed predominantly on cells of the myeloid lineage, but it can also be found on some lymphoid cells.
<b>Reactivity</b>	Human
<b>Specificity</b>	Recognises human CD33.
<b>Form</b>	Liquid
<b>Purification</b>	Protein A affinity purification
<b>Isotype</b>	IgG1, Kappa
<b>Recommend Usage</b>	ELISA Immunofluorescence The optimal working dilution should be determined by the end user.
<b>Storage Buffer</b>	In PBS with 0.02% Proclin 300
<b>Storage Instruction</b>	Store at 4°C for up to 3 months. For longer storage, aliquot and store at -20°C.

## Applications

- Enzyme-linked Immunoabsorbent Assay

ELISA Plate coated with human His-tagged CD33 at a concentration of 2 ug/mL. A 3-fold serial dilution from 10,000 to 0.1 ng/mL was performed using. For detection, a 1:4000 dilution of HRP-labelled anti-human kappa light chain antibody was used.

- Flow Cytometry

Flow-cytometry were stained with an isotype control at a concentration of 1 ug/mL for 30 mins at RT. After washing, bound antibody was detected using a AF488 conjugated donkey anti-rabbit antibody and cells analysed on a FACSCanto flow-cytometer.

## Gene Info — CD33

<b>Entrez GeneID</b>	<a href="#">945</a>
<b>Protein Accession#</b>	<a href="#">P20138</a>
<b>Gene Name</b>	CD33
<b>Gene Alias</b>	FLJ00391, SIGLEC-3, SIGLEC3, p67
<b>Gene Description</b>	CD33 molecule

Omim ID	<a href="#">159590</a>
Gene Ontology	<a href="#">Hyperlink</a>
Other Designations	CD33 antigen CD33 antigen (gp67)

## Pathway

- [Hematopoietic cell lineage](#)

## Disease

- [Leukemia](#)
- [Neoplasm](#)
- [Tobacco Use Disorder](#)