

RecomAb™

HuAb

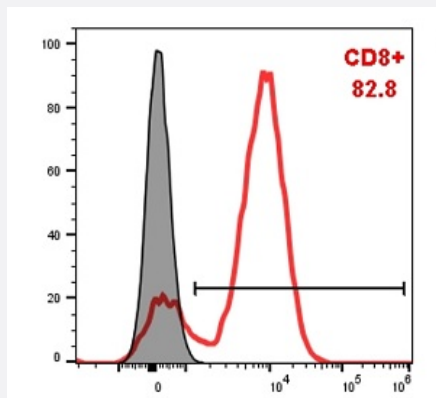
NanoAb™

# CD8A VHH-hIgG1 humanized monoclonal antibody, clone A1

Catalog # RAB01120-M01J

Size 50 ug

## Applications



### Flow Cytometry

Flow cytometry analysis of enriched human CD3 T cells were treated with CD8A VHH-hIgG1 humanized monoclonal antibody, clone A1 (Cat # RAB01120-M01J). This antibody efficiently bound to human CD8 T cells.

## Specification

Product Description	Humanized VHH recombinant monoclonal antibody raised against CD8A protein.
Antibody Species	Human
Immunogen	Human CD8A recombinant protein
Reactivity	Human
Specificity	This antibody recognizes human CD8A.
Form	Liquid
Purification	Protein A sepharose
Isotype	Human IgG1 with LALAPG mutations in Fc fragment
Storage Buffer	In PBS, pH 7.4
Storage Instruction	Store at -80°C. Aliquot to avoid repeated freezing and thawing.

## Applications

- Flow Cytometry

Flow cytometry analysis of enriched human CD3 T cells were treated with CD8A VHH-hlgG1 humanized monoclonal antibody, clone A1 (Cat # RAB01120-M01J). This antibody efficiently bound to human CD8 T cells.

## Gene Info — CD8A

Entrez GeneID [925](#)

Gene Name CD8A

Gene Alias CD8, Leu2, MAL, p32

Gene Description CD8a molecule

Omim ID [186910 608957](#)

Gene Ontology [Hyperlink](#)

**Gene Summary** The CD8 antigen is a cell surface glycoprotein found on most cytotoxic T lymphocytes that mediates efficient cell-cell interactions within the immune system. The CD8 antigen acts as a coreceptor with the T-cell receptor on the T lymphocyte to recognize antigens displayed by an antigen presenting cell (APC) in the context of class I MHC molecules. The coreceptor functions as either a homodimer composed of two alpha chains, or as a heterodimer composed of one alpha and one beta chain. Both alpha and beta chains share significant homology to immunoglobulin variable light chains. This gene encodes the CD8 alpha chain isoforms. Multiple transcript variants encoding different isoforms have been found for this gene. [provided by RefSeq]

**Other Designations** CD8 antigen alpha polypeptide|CD8 antigen, alpha polypeptide (p32)|Leu2 T-lymphocyte antigen|OKT8 T-cell antigen|T cell co-receptor|T-cell antigen Leu2|T-cell surface glycoprotein CD8 alpha chain|T-lymphocyte differentiation antigen T8/Leu-2|T8 T-cell ant

## Pathway

- [Antigen processing and presentation](#)
- [Cell adhesion molecules \(CAMs\)](#)
- [Hematopoietic cell lineage](#)
- [Primary immunodeficiency](#)

- [T cell receptor signaling pathway](#)