

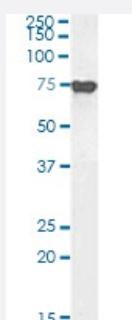
RecomAb™

AFP monoclonal antibody, clone AF5

Catalog # RAB01092 Size 200 ug

Applications

Western Blot (Cell lysate)



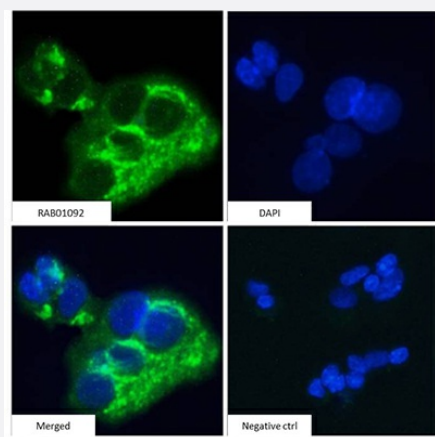
Western blot analysis of AFP monoclonal antibody, clone AF5 (Cat # RAB01092).

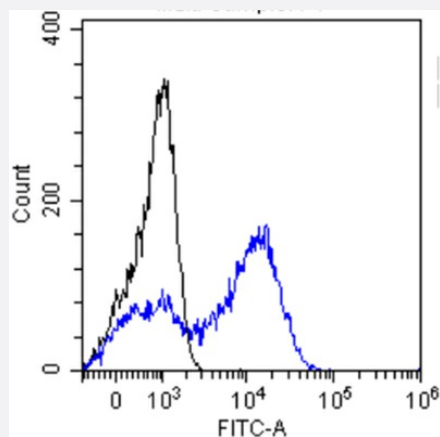
HepG2 cell lysate (35 ug protein in RIPA buffer) was resolved on a 10% SDS PAGE gel and blots probed with the chimeric rabbit antibody (Cat # RAB01092) at 1 ug/mL before detection using an anti-rabbit secondary antibody. A primary incubation of 1h was used and protein was detected by chemiluminescence. The expected band size for Alpha-fetoprotein is 68.7kDa, though this protein is also glycosylated (Uniprot ID: P02771). Cat # RAB01092 successfully detected human AFP in HepG2 cell lysates.

Immunofluorescence

Immunofluorescence staining of fixed HepG2 cells with AFP monoclonal antibody, clone AF5 (Cat # RAB01092).

Immunofluorescence analysis of paraformaldehyde fixed HepG2 cells, permeabilized with 0.15% Triton stained with the chimeric rabbit antibody (Cat # RAB01092) at 10 ug/mL for 1h followed by Alexa Fluor®488 secondary antibody (1 ug/mL), showing cytoplasmic staining. The nuclear stain is DAPI (blue). Panels show from left-right, top-bottom Cat # RAB01092, DAPI, merged channels and a negative control. The negative control was stained with unimmunized rabbit IgG followed by Alexa Fluor®488 secondary antibody.





Flow Cytometry

Flow-cytometry using AFP monoclonal antibody, clone AF5 (Cat # RAB01092) HepG2 cells were stained with unimmunized rabbit IgG antibody (black line) or the rabbit-chimeric antibody (Cat # RAB01092, blue line) at a concentration of 10 ug/mL for 30 mins at RT. After washing, bound antibody was detected using anti-rabbit IgG JK (FITC-conjugate) antibody at 2 ug/mL and cells analyzed on a FACSCanto flow-cytometer.

Specification

Product Description	Rabbit recombinant monoclonal antibody raised against human AFP.
Antibody Species	Rabbit
Immunogen	Originate antibody is raised against AFP from human amniotic fluid.
Reactivity	Human
Specificity	This antibody reacts to human AFP.
Form	Liquid
Purification	Protein A affinity purified
Isotype	Rabbit IgG, kappa
Recommend Usage	Flow Cytometry Immunofluorescence Western Blot The optimal working dilution should be determined by the end user.
Storage Buffer	In PBS (0.02% Proclin 300)
Storage Instruction	Store at 4°C. For long term storage store at -20°C. Aliquot to avoid repeated freezing and thawing.

Applications

- Western Blot (Cell lysate)

Western blot analysis of AFP monoclonal antibody, clone AF5 (Cat # RAB01092).

HepG2 cell lysate (35 ug protein in RIPA buffer) was resolved on a 10% SDS PAGE gel and blots probed with the chimeric rabbit antibody (Cat # RAB01092) at 1 ug/mL before detection using an anti-rabbit secondary antibody. A primary incubation of 1h was used and protein was detected by chemiluminescence. The expected band size for Alpha-fetoprotein is 68.7kDa, though this protein is also glycosylated (Uniprot ID: P02771). Cat # RAB01092 successfully detected human AFP in HepG2 cell lysates.

- Immunofluorescence

Immunofluorescence staining of fixed HepG2 cells with AFP monoclonal antibody, clone AF5 (Cat # RAB01092).

Immunofluorescence analysis of paraformaldehyde fixed HepG2 cells, permeabilized with 0.15% Triton stained with the chimeric rabbit antibody (Cat # RAB01092) at 10 ug/mL for 1h followed by Alexa Fluor®488 secondary antibody (1 ug/mL), showing cytoplasmic staining. The nuclear stain is DAPI (blue). Panels show from left-right, top-bottom Cat # RAB01092, DAPI, merged channels and a negative control. The negative control was stained with unimmunized rabbit IgG followed by Alexa Fluor®488 secondary antibody.

- Flow Cytometry

Flow-cytometry using AFP monoclonal antibody, clone AF5 (Cat # RAB01092)

HepG2 cells were stained with unimmunized rabbit IgG antibody (black line) or the rabbit-chimeric antibody (Cat # RAB01092, blue line) at a concentration of 10 ug/mL for 30 mins at RT. After washing, bound antibody was detected using anti-rabbit IgG JK (FITC-conjugate) antibody at 2 ug/mL and cells analyzed on a FACSCanto flow-cytometer.

Gene Info — AFP

Entrez GeneID [174](#)

Protein Accession# [P02771](#)

Gene Name AFP

Gene Alias FETA, HPAFP

Gene Description alpha-fetoprotein

Omim ID [104150](#)

Gene Ontology [Hyperlink](#)

Gene Summary

This gene encodes alpha-fetoprotein, a major plasma protein produced by the yolk sac and the liver during fetal life. Alpha-fetoprotein expression in adults is often associated with hepatoma or teratoma. However, hereditary persistence of alpha-fetoprotein may also be found in individuals with no obvious pathology. The protein is thought to be the fetal counterpart of serum albumin, and the alpha-fetoprotein and albumin genes are present in tandem in the same transcriptional orientation on chromosome 4. Alpha-fetoprotein is found in monomeric as well as dimeric and trimeric forms, and binds copper, nickel, fatty acids and bilirubin. The level of alpha-fetoprotein in amniotic fluid is used to measure renal loss of protein to screen for spina bifida and anencephaly. [provided by RefSeq]

Other Designations

OTTHUMP00000160480|alpha-1-fetoprotein|alpha-fetoglobulin

Disease

- [Carcinoma](#)
- [Liver Cirrhosis](#)
- [Liver Neoplasms](#)