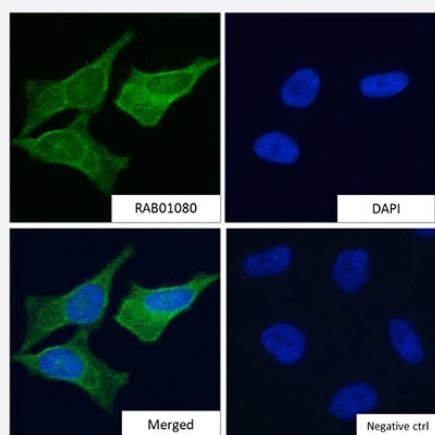


RecomAb™

## AOC3 monoclonal antibody, clone TK8-14

Catalog # RAB01080      Size 200 ug

### Applications



### Immunofluorescence

Immunofluorescence staining of HeLa cells with AOC3 monoclonal antibody, clone TK8-14 (Cat # RAB01080).

Immunofluorescence analysis of paraformaldehyde fixed HeLa cells, permeabilized with 0.15% Triton and stained with the chimeric rabbit antibody (Cat # RAB01080) at 10 ug/mL for 1h followed by Alexa Fluor® 488 secondary antibody (1 ug/mL), showing membrane and cytoplasmic staining. The nuclear stain is DAPI (blue). Panels show from left-right, top-bottom Cat # RAB01080, DAPI, merged channels and a negative control. The negative control was stained with unimmunized rabbit IgG followed by Alexa Fluor® 488 secondary antibody

### Specification

<b>Product Description</b>	Rabbit recombinant monoclonal antibody raised against human AOC3.
<b>Antibody Species</b>	Rabbit
<b>Immunogen</b>	Originate antibody is raised against affinity purified AOC3 from tonsil stroma of human origin.
<b>Reactivity</b>	Human
<b>Specificity</b>	This antibody reacts to AOC3.
<b>Form</b>	Liquid
<b>Purification</b>	Protein A affinity purified
<b>Isotype</b>	Rabbit IgG, kappa

<b>Recommend Usage</b>	Immunofluorescence The optimal working dilution should be determined by the end user.
------------------------	--

<b>Storage Buffer</b>	In PBS (0.02% Proclin 300)
-----------------------	----------------------------

<b>Storage Instruction</b>	Store at 4°C. For long term storage store at -20°C. Aliquot to avoid repeated freezing and thawing.
----------------------------	--

## Applications

- Immunofluorescence

Immunofluorescence staining of HeLa cells with AOC3 monoclonal antibody, clone TK8-14 (Cat # RAB01080).

Immunofluorescence analysis of paraformaldehyde fixed HeLa cells, permeabilized with 0.15% Triton and stained with the chimeric rabbit antibody (Cat # RAB01080) at 10 ug/mL for 1h followed by Alexa Fluor® 488 secondary antibody (1 ug/mL), showing membrane and cytoplasmic staining. The nuclear stain is DAPI (blue). Panels show from left-right, top-bottom Cat # RAB01080, DAPI, merged channels and a negative control. The negative control was stained with unimmunized rabbit IgG followed by Alexa Fluor® 488 secondary antibody

## Gene Info — AOC3

<b>Entrez GeneID</b>	<a href="#">8639</a>
----------------------	----------------------

<b>Protein Accession#</b>	<a href="#">Q16853</a>
---------------------------	------------------------

<b>Gene Name</b>	AOC3
------------------	------

<b>Gene Alias</b>	HPAO, SSAO, VAP-1, VAP1
-------------------	-------------------------

<b>Gene Description</b>	amine oxidase, copper containing 3 (vascular adhesion protein 1)
-------------------------	--

<b>Omim ID</b>	<a href="#">603735</a>
----------------	------------------------

<b>Gene Ontology</b>	<a href="#">Hyperlink</a>
----------------------	---------------------------

<b>Gene Summary</b>	Copper amine oxidases catalyze the oxidative conversion of amines to aldehydes in the presence of copper and quinone cofactor. The product is a major protein on the adipocyte plasma membrane. It has adhesive properties and also has functional monoamine oxidase activity. A pseudogene for this gene has been described and is located approximately 9-kb downstream. [provided by RefSeq]
---------------------	---

<b>Other Designations</b>	amine oxidase, copper containing 3 copper amine oxidase semicarbazide-sensitive amine oxidase vascular adhesion protein 1
---------------------------	---

## Pathway

- [beta-Alanine metabolism](#)
- [Biosynthesis of alkaloids derived from ornithine](#)
- [Glycine](#)
- [Isoquinoline alkaloid biosynthesis](#)
- [Metabolic pathways](#)
- [Phenylalanine metabolism](#)
- [Tropane](#)
- [Tyrosine metabolism](#)