

RecomAb™

MS4A1 monoclonal antibody, clone 10F381 (rituximab)

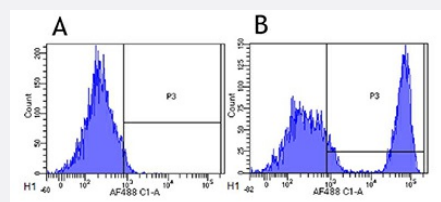
Catalog # RAB01073 Size 200 ug

Applications

Flow Cytometry

Flow-cytometry using MS4A1 monoclonal antibody, clone 10F381 (rituximab) (Cat # RAB01073).

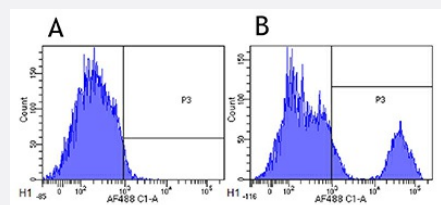
Rhesus monkey lymphocytes were stained with an isotype control (panel A) or the rabbit-chimeric antibody (Cat # RAB01073, panel B) at a concentration of 1 ug/mL for 30 mins at RT. After washing, bound antibody was detected using a AF488 conjugated donkey anti-rabbit antibody and cells analysed on a FACSCanto flow-cytometer.



Flow Cytometry

Flow-cytometry using MS4A1 monoclonal antibody, clone 10F381 (rituximab) (Cat # RAB01073).

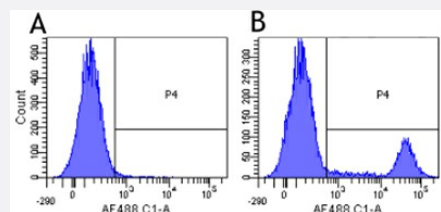
Cynomolgus monkey lymphocytes were stained with an isotype control (panel A) or the rabbit-chimeric antibody (Cat # RAB01073, panel B) at a concentration of 1 ug/mL for 30 mins at RT. After washing, bound antibody was detected using a AF488 conjugated donkey anti-rabbit antibody and cells analysed on a FACSCanto flow-cytometer.



Flow Cytometry

Flow-cytometry using MS4A1 monoclonal antibody, clone 10F381 (rituximab) (Cat # RAB01073).

Human lymphocytes were stained with an isotype control (panel A) or the rabbit-chimeric antibody (Cat # RAB01073, panel B) at a concentration of 1 ug/mL for 30 mins at RT. After washing, bound antibody was detected using a AF488 conjugated donkey anti-rabbit antibody and cells analysed on a FACSCanto flow-cytometer.



Specification

Product Description	Rabbit recombinant monoclonal antibody raised against MS4A1.
Antibody Species	Rabbit
Reactivity	Crab-eating macaque, Human, Macaque
Specificity	This antibody reacts to MS4A1.
Form	Liquid
Purification	Protein A affinity purified
Isotype	Rabbit IgG, kappa
Recommend Usage	Flow Cytometry The optimal working dilution should be determined by the end user.
Storage Buffer	In PBS (0.02% Proclin 300)
Storage Instruction	Store at 4°C. For long term storage store at -20°C. Aliquot to avoid repeated freezing and thawing.

Applications

- Flow Cytometry

Flow-cytometry using MS4A1 monoclonal antibody, clone 10F381 (rituximab) (Cat # RAB01073).

Rhesus monkey lymphocytes were stained with an isotype control (panel A) or the rabbit-chimeric antibody (Cat # RAB01073, panel B) at a concentration of 1 ug/mL for 30 mins at RT. After washing, bound antibody was detected using a AF488 conjugated donkey anti-rabbit antibody and cells analysed on a FACSCanto flow-cytometer.

- Flow Cytometry

Flow-cytometry using MS4A1 monoclonal antibody, clone 10F381 (rituximab) (Cat # RAB01073).

Cynomolgus monkey lymphocytes were stained with an isotype control (panel A) or the rabbit-chimeric antibody (Cat # RAB01073, panel B) at a concentration of 1 ug/mL for 30 mins at RT. After washing, bound antibody was detected using a AF488 conjugated donkey anti-rabbit antibody and cells analysed on a FACSCanto flow-cytometer.

- Flow Cytometry

Flow-cytometry using MS4A1 monoclonal antibody, clone 10F381 (rituximab) (Cat # RAB01073).

Human lymphocytes were stained with an isotype control (panel A) or the rabbit-chimeric antibody (Cat # RAB01073, panel B) at a concentration of 1 ug/mL for 30 mins at RT. After washing, bound antibody was detected using a AF488 conjugated donkey anti-rabbit antibody and cells analysed on a FACSCanto flow-cytometer.

Gene Info — MS4A1

Entrez GeneID [931](#)

Protein Accession# [P11836](#)

Gene Name MS4A1

Gene Alias B1, Bp35, CD20, LEU-16, MGC3969, MS4A2, S7

Gene Description membrane-spanning 4-domains, subfamily A, member 1

Omim ID [112210](#)

Gene Ontology [Hyperlink](#)

Gene Summary This gene encodes a member of the membrane-spanning 4A gene family. Members of this nascent protein family are characterized by common structural features and similar intron/exon splice boundaries and display unique expression patterns among hematopoietic cells and nonlymphoid tissues. This gene encodes a B-lymphocyte surface molecule which plays a role in the development and differentiation of B-cells into plasma cells. This family member is localized to 11q12, among a cluster of family members. Alternative splicing of this gene results in two transcript variants which encode the same protein. [provided by RefSeq]

Other Designations B-lymphocyte cell-surface antigen B1|CD20 antigen|CD20 receptor

Pathway

- [Hematopoietic cell lineage](#)

Disease

- [Breast cancer](#)
- [Breast Neoplasms](#)
- [Genetic Predisposition to Disease](#)
- [Lymphoma](#)
- [Neoplasm Recurrence](#)
- [Ovarian cancer](#)