

SARS-CoV-2

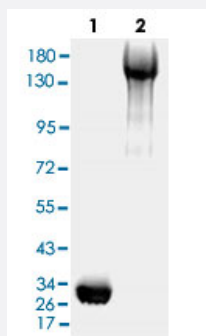
RecomAb™

SARS-CoV-2 S ECD/RBD recombinant human antibody, clone BHB1

Catalog # RAB01045

Size 5 x 100 ug, 10 x 100 ug, 100 ug

Applications



Western Blot

Western blot analysis with SARS-CoV-2 S ECD/RBD recombinant human antibody, clone BHB1 (1:1000) and Goat Anti-Human IgG (H&L) secondary antibody (HRP) (1:5000) of Lane 1: S1 (SARS-CoV-2) RBD Recombinant Protein (Cat # P6661), Lane 2: S (SARS-CoV-2) ECD Recombinant Protein (Cat # P6662).

ELISA experiment

| | 1 | 2 | |
|---|-------|-------|---------------|
| A | 2.347 | 2.399 | . 1:1000 |
| B | 2.036 | 2.216 | . 1:10000 |
| C | 2.297 | 2.139 | . 1:20000 |
| D | 2.441 | 2.624 | . 1:40000 |
| E | 2.104 | 2.292 | . 1:80000 |
| F | 1.764 | 1.713 | . 1:160000 |
| G | 1.186 | 1.213 | . 1:320000 |
| H | 0.105 | 0.086 | Blank control |

Enzyme-linked Immunoabsorbent Assay

ELISA analysis was coated by Lane 1: S (SARS-CoV-2) ECD Recombinant Protein (Cat # P6662), Lane 2: S1 (SARS-CoV-2) RBD Recombinant Protein (Cat # P6661), 100 uL/well at 2 ug/mL, was performed by loading SARS-CoV-2 S ECD/RBD recombinant human antibody, clone BHB1 at various concentrations and Goat Anti-Human IgG (H&L) secondary antibody (HRP) (1:10000).

Specification

| | |
|----------------------------|--|
| Product Description | Human recombinant monoclonal antibody raised against SARS-CoV-2 S ECD/RBD. |
| Antibody Species | Human |
| Source / Expression System | 293F |
| Immunogen | Natural SARS-CoV-2 |
| Reactivity | SARS-CoV-2 |

| | |
|---------------------|--|
| Specificity | The antibody detects endogenous levels of SARS-CoV-2 S ECD/RBD. |
| Form | Liquid |
| Purification | Affinity purification |
| Purity | > 95% by SDS-PAGE |
| Isotype | IgG |
| Recommend Usage | ELISA Neutralization Western Blot (1:1000-1:2000) The optimal working dilution should be determined by the end user. |
| Matched Pair | RAB01048 (for SARS-CoV-2 S ECD) RAB01049 (for SARS-CoV-2 S ECD) RAB01046 (for SARS-CoV-2 S RBD) RAB01047 (for SARS-CoV-2 S RBD) |
| Storage Buffer | In PBS, pH 7.2 |
| Storage Instruction | Store at 4°C for short term. For long term storage store at -20°C. Aliquot to avoid repeated freezing and thawing. |

Applications

- Western Blot

Western blot analysis with SARS-CoV-2 S ECD/RBD recombinant human antibody, clone BHB1 (1:1000) and Goat Anti-Human IgG (H&L) secondary antibody (HRP) (1:5000) of Lane 1: S1 (SARS-CoV-2) RBD Recombinant Protein (Cat # P6661), Lane 2: S (SARS-CoV-2) ECD Recombinant Protein (Cat # P6662).

- Enzyme-linked Immunoabsorbent Assay

ELISA analysis was coated by Lane 1: S (SARS-CoV-2) ECD Recombinant Protein (Cat # P6662), Lane 2: S1 (SARS-CoV-2) RBD Recombinant Protein (Cat # P6661), 100 μ L/well at 2 μ g/mL, was performed by loading SARS-CoV-2 S ECD/RBD recombinant human antibody, clone BHB1 at various concentrations and Goat Anti-Human IgG (H&L) secondary antibody (HRP) (1:10000).

- Neutralization