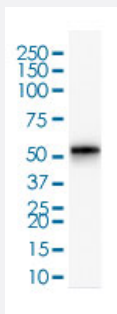


RecomAb™

KRT7 recombinant monoclonal antibody, clone KRT7/1499R

Catalog # RAB00699 Size 100 ug

Applications



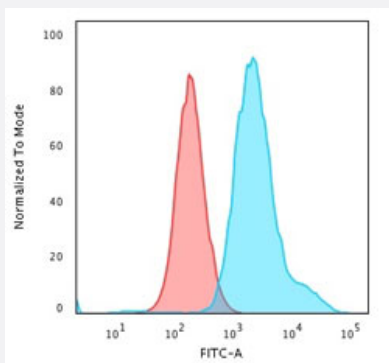
Western Blot (Cell lysate)

Western Blot (cell lysate) analysis of HeLa cell lysate.



Immunohistochemistry (Formalin/PFA-fixed paraffin-embedded sections)

Immunohistochemical staining of human oviduct.



Flow Cytometry

Flow cytometric analysis of PFA-fixed HeLa cells. This antibody followed by goat anti-rabbit IgG-CF488 (Blue). Isotype Control (Red).

Specification

Product Description

Rabbit recombinant monoclonal antibody raised against full length human KRT7.

Antibody Species	Rabbit
Immunogen	Recombinant protein corresponding to full-length human KRT7.
Reactivity	Human
Form	Liquid
Purification	Protein A purification
Isotype	IgG
Recommend Usage	Flow Cytometry (1-2 ug/million cells) Immunohistochemistry (Formalin/PFA-fixed paraffin-embedded sections) (1-2 ug/mL) Western Blot (1-2 ug/mL) The optimal working dilution should be determined by the end user.
Storage Buffer	In 10 mM PBS (0.05% BSA and 0.05% azide)
Storage Instruction	Store at 2 to 8°C.
Note	This product contains sodium azide: a POISONOUS AND HAZARDOUS SUBSTANCE which should be handled by trained staff only.

Applications

- Western Blot (Cell lysate)

Western Blot (cell lysate) analysis of HeLa cell lysate.

- Immunohistochemistry (Formalin/PFA-fixed paraffin-embedded sections)

Immunohistochemical staining of human oviduct.

- Flow Cytometry

Flow cytometric analysis of PFA-fixed HeLa cells. This antibody followed by goat anti-rabbit IgG-CF488 (Blue). Isotype Control (Red).

Gene Info — KRT7

Entrez GeneID	3855
Protein Accession#	O95096
Gene Name	KRT7
Gene Alias	CK7, K2C7, K7, MGC129731, MGC3625, SCL

Gene Description	keratin 7
Omim ID	148059
Gene Ontology	Hyperlink
Gene Summary	<p>The protein encoded by this gene is a member of the keratin gene family. The type II cytokeratins consist of basic or neutral proteins which are arranged in pairs of heterotypic keratin chains coexpressed during differentiation of simple and stratified epithelial tissues. This type II cytokeratin is specifically expressed in the simple epithelia lining the cavities of the internal organs and in the gland ducts and blood vessels. The genes encoding the type II cytokeratins are clustered in a region of chromosome 12q12-q13. Alternative splicing may result in several transcript variants; however, not all variants have been fully described. [provided by RefSeq]</p>
Other Designations	cytokeratin 7 keratin, 55K type II cytoskeletal keratin, simple epithelial type I, K7 keratin, type II cytoskeletal 7 sarcolectin type II mesothelial keratin K7