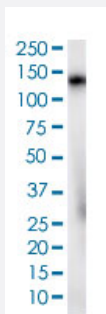


RecomAb™

CD68 recombinant monoclonal antibody, clone C68/2908R

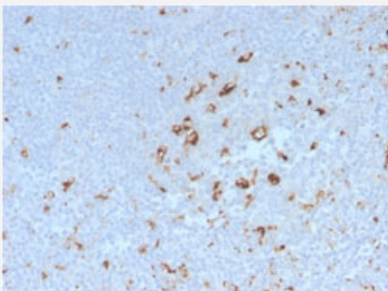
Catalog # RAB00677 Size 100 ug

Applications



Western Blot (Tissue lysate)

Western Blot (tissue lysate) analysis of human spleen tissue lysate.



Immunohistochemistry (Formalin/PFA-fixed paraffin-embedded sections)

Immunohistochemical staining of human tonsil.

Specification

| | |
|----------------------------|---|
| Product Description | Rabbit recombinant monoclonal antibody raised against full length human CD68. |
| Antibody Species | Rabbit |
| Immunogen | Recombinant protein corresponding to full-length human CD68. |
| Reactivity | Human |
| Form | Liquid |
| Purification | Protein A/G purification |

| | |
|---------------------|--|
| Isotype | IgG |
| Recommend Usage | Immunohistochemistry (Formalin/PFA-fixed paraffin-embedded sections) (1-2 ug/mL) Western Blot (1-2 ug/mL) The optimal working dilution should be determined by the end user. |
| Storage Buffer | In 1 mg/mL PBS |
| Storage Instruction | Store at -20 to -80°C. Aliquot to avoid repeated freezing and thawing. |

Applications

- Western Blot (Tissue lysate)
Western Blot (tissue lysate) analysis of human spleen tissue lysate.
- Immunohistochemistry (Formalin/PFA-fixed paraffin-embedded sections)
Immunohistochemical staining of human tonsil.

Gene Info — CD68

| | |
|--------------------|---|
| Entrez GeneID | 968 |
| Protein Accession# | P34810 |
| Gene Name | CD68 |
| Gene Alias | DKFZp686M18236, GP110, SCARD1 |
| Gene Description | CD68 molecule |
| Omim ID | 153634 |
| Gene Ontology | Hyperlink |
| Gene Summary | This gene encodes a 110-kD transmembrane glycoprotein that is highly expressed by human monocytes and tissue macrophages. It is a member of the lysosomal/endosomal-associated membrane glycoprotein (LAMP) family. The protein primarily localizes to lysosomes and endosomes with a smaller fraction circulating to the cell surface. It is a type I integral membrane protein with a heavily glycosylated extracellular domain and binds to tissue- and organ-specific lectins or selectins. The protein is also a member of the scavenger receptor family. Scavenger receptors typically function to clear cellular debris, promote phagocytosis, and mediate the recruitment and activation of macrophages. Alternative splicing results in multiple transcripts encoding different isoforms. [provided by RefSeq] |

Other Designations

CD68 antigen|OTTHUMP00000135285|macrophage antigen CD68|macrosialin|scavenger receptor class D, member 1

Pathway

- [Lysosome](#)