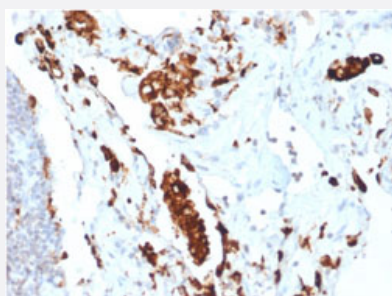


RecomAb™

NAPSA recombinant monoclonal antibody, clone NAPSA/1865R

Catalog # RAB00672 Size 100 ug

Applications



Immunohistochemistry (Formalin/PFA-fixed paraffin-embedded sections)

Immunohistochemical staining of human lung.

Specification

| | |
|----------------------------|--|
| Product Description | Rabbit recombinant monoclonal antibody raised against partial human NAPSA. |
| Antibody Species | Rabbit |
| Immunogen | Recombinant protein corresponding to amino acids 189-299 of human NAPSA. |
| Reactivity | Human |
| Form | Liquid |
| Purification | Protein A/G purification |
| Isotype | IgG |
| Recommend Usage | Immunohistochemistry (Formalin/PFA-fixed paraffin-embedded sections) (1-2 ug/mL) The optimal working dilution should be determined by the end user. |
| Storage Buffer | In 1 mg/mL PBS |
| Storage Instruction | Store at -20 to -80°C. |

Applications

- Immunohistochemistry (Formalin/PFA-fixed paraffin-embedded sections)

Immunohistochemical staining of human lung.

Gene Info — NAPSA

Entrez GeneID [9476](#)

Protein Accession# [O96009](#)

Gene Name NAPSA

Gene Alias KAP, Kdap, NAP1, NAPA, SNAPA

Gene Description napsin A aspartic peptidase

Omim ID [605631](#)

Gene Ontology [Hyperlink](#)

Gene Summary The activation peptides of aspartic proteinases plays role as inhibitors of the active site. These peptide segments, or pro-parts, are deemed important for correct folding, targeting, and control of the activation of aspartic proteinase zymogens. The pronapsin A gene is expressed predominantly in lung and kidney. Its translation product is predicted to be a fully functional, glycosylated aspartic proteinase precursor containing an RGD motif and an additional 18 residues at its C-terminus. [provided by RefSeq]

Other Designations napsin A|pronapsin A

Pathway

- [Lysosome](#)